



WWW.ROFFS.COM



FISHING@ROFFS.COM



321.723.5759



@ROFFSFISHING



FISHERIES OCEANOGRAPHIC ANALYSIS FOR THE PENSACOLA TO BARATARIA BAY OFFSHORE AREA (LAT./LONG)

UPDATED ON SATURDAY 11 JULY 2020 FOR SATURDAY P.M. AND SUNDAY FISHING ONLY

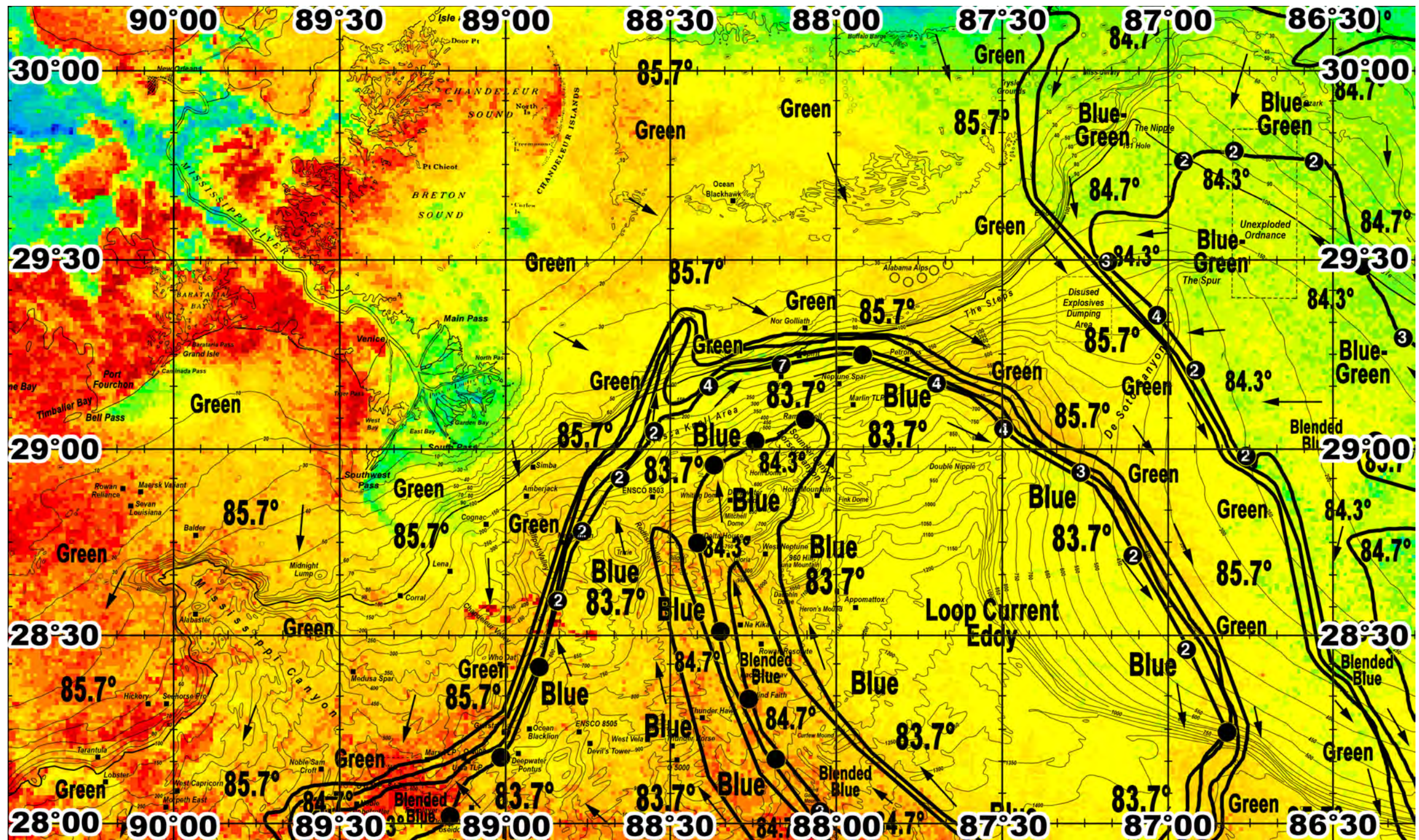
Based on a multiple factor oceanographic analysis, the indicated areas (hot spot dots) on the analysis mark the areas where bait concentrations are expected and where fishing action is expected to be better compared with other areas. Numbers inside of the hot spot dots indicate the number of consecutive days that we have seen favorable oceanographic conditions in that location. These areas are not based on dock rumors or hearsay fishing reports, they are based on oceanographic knowledge and expertise. You should start fishing where you recognize other signs of good fishing conditions near these marked areas (ie. rips/slicks, weed lines, birds, etc). It is very important to use your sea surface temperature (SST) gauge to locate the boundaries of the water masses, which are outlined in black. PLEASE REMEMBER, rather than trying to find water masses based on the absolute temperature values shown on the map, search for the relative change in SST where the water mass boundaries occur. Arrows indicate the main current direction. 1 fathom = approximately 6 feet. Afternoon SST is likely to be 1.0°F or more WARMER than indicated by the morning SST calibration on this analysis. NUMBERS IN PERENTHESIS AFTER LOCATIONS ARE NUMBER OF DAYS THAT SPOT HAS BEEN FAVORABLE. **Fathom Science SST and Ocean Color/Chlorophyll Forecasts now included on final two pages.**

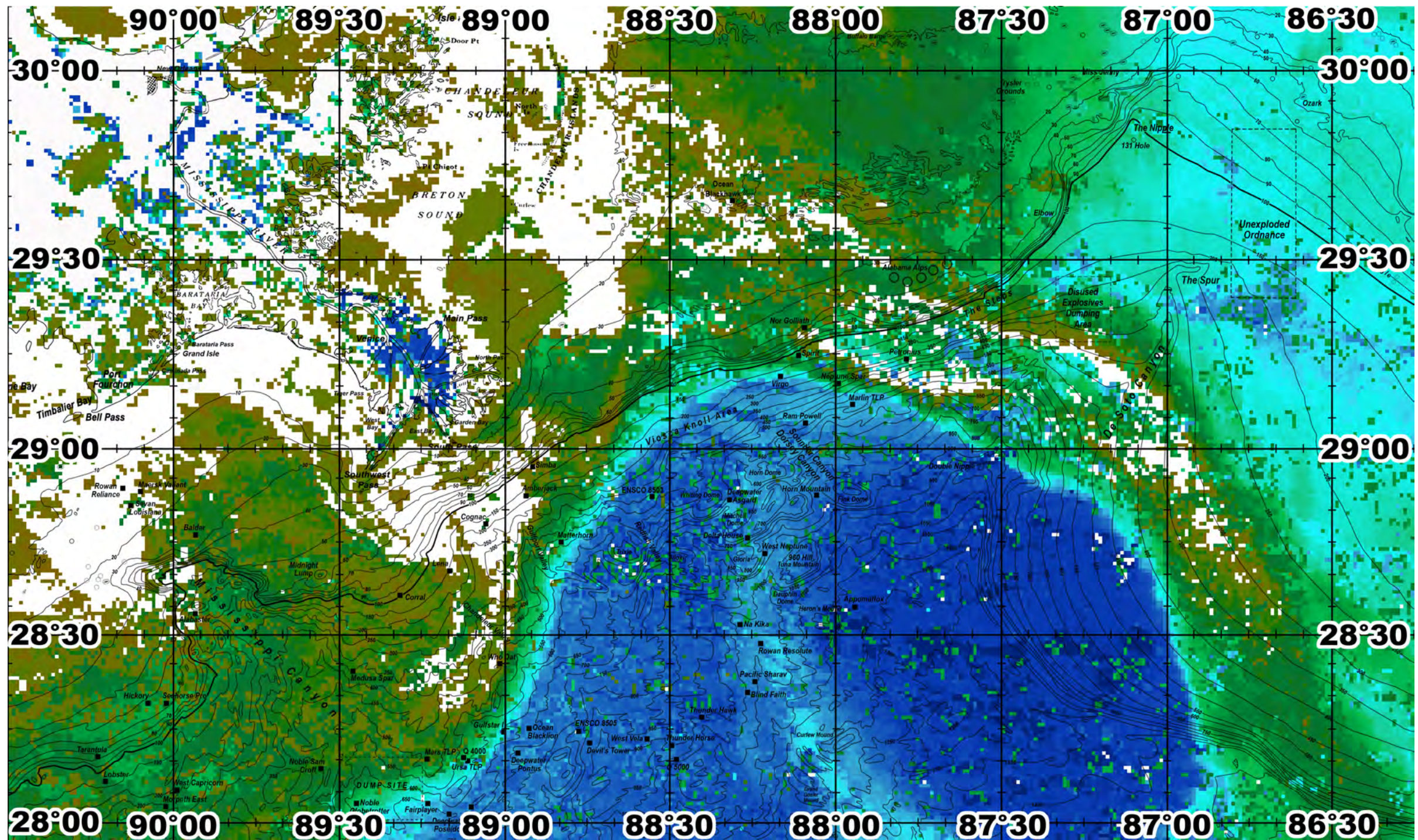
We were able to observe the ocean conditions in this area relatively clearly today and we continue to be able to provide this update of the ocean conditions using a combination of high-resolution infrared SST from this morning along with ocean color/chlorophyll satellite imagery from the past 24 hours. We have also included an ocean color image along with today's analysis created from a combination of ocean color/chlorophyll imagery from the past 24 hours in order for you to see the true water colors in this area. **We continue to provide cloud-free SST and ocean color/chlorophyll data from our new partner Fathom Science™. This data is cutting-edge, high resolution, cloud-free modeled data that has been evaluated and validated by ROFFS™ along with other oceanographic scientists and proven to be the most accurate cloud-free data available anywhere to guide you in the right direction to increase your chances for fishing action.** Overall, we continue to observe the clockwise circulation of a large Loop Current eddy feature centered generally south of the Double Nipple towards 87°30'W & 28°30'N. As this feature continues to rotate in a clockwise direction it continues to push cleaner blue water in a favorable northward inshore direction towards the area northeast of the Dump Site, east of the Chandeleur Valley and the Gulfport Valley, over the Redfish Valley area, inshore of the Viosca Knoll and Dorsey/Sounder Canyon areas, over the Ram Powell Rig, Marlin TLP Rig and towards the Petronius Rig and the area south of the Steps before turning southeastward southeast of the Steps region and southeastward over the De Soto Canyon. Inshore, cleaner blue-green to blended blue water also continues to occur west of Cape San Blas towards the area west of the Wings and Squiggles and towards the Unexploded Ordnance and Spur regions mainly due to the counter-clockwise rotation of the green water that is now centered towards the area south of the Pensacola South 42039 NOAA buoy towards 85°45'W & 28°15'N. Westward, a large plume of green water continues to move southward covering the Mississippi Canyon and west/southwestward towards the Diaphus Bank and east of the Green Canyon.

With this in mind, on your way offshore from the Orange Beach and Pensacola areas, increased overall chances for fishing action are likely to occur where we observed the edges of the relatively cleaner blue-green water towards the area southeast of the Nipple and eastward over the northern side of the Unexploded Ordnance from 86°58'W & 29°45'N (2) to 86°47'W & 29°47'N (2) to 86°33'W & 29°45'N (2) with additional chances for action occurring southeastward west of the Wings and Johnny Walker areas where we observed favorable conditions for two and three days now from 86°18'W & 29°17'N (3) to 86°07'W & 29°10'N (3) to 85°58'W & 29°03'N (2). Southwestward towards the area west/southwest of the Spur over the De Soto Canyon additional chances for action also occur particularly where we observed favorable conditions for multiple days now along the southwestern edge of the cleaner blue-green water from 87°11'W & 29°30'N (3) to 87°01'W & 29°21'N (4) to 86°55-56'W & 29°13'N (2) to 86°45'W & 28°59'N (2). Additional chances for action occur southwestward over the ledges of the De Soto Canyon and northwestward towards the area north of the Double Nipple where we observed the northeastern edges of the clean blue water being circulated around the large Loop Current eddy from 86°57'W & 28°28'N (2) to 87°06'W & 28°43'N (2) to 87°15'W & 28°55-56'N (3) to 87°30'W & 29°03'N (4) to 87°42'W & 29°09'N (4). Continuing westward over the ledges inshore of the Dorsey/Sounder Canyon and the Viosca Knoll area the northwestern edges of the same cleaner blue water and the strong green to blue water color change are also likely to provide good action with tuna, wahoo, dolphin and billfish particularly where we observed these conditions for multiple days now from 88°10'W & 29°13'N (7) to 88°22-23'W & 29°10'N (4). Southwestward, southeast of the Mississippi River Delta region the northwestern edge of the clean blue water is also likely to provide

increased chances for fishing action where we observed these conditions west/southwest of the Viosca Knoll, southwestward towards the Gulfport Valley and the Chandeleur Valley and further southward towards the eastern side of the Dump Site particularly where we observed these conditions for two days now from 88°33'W & 29°03'N (2) to 88°39'W & 28°55'N (2) to 88°45-46'W & 28°47'N (2) to 88°49-50'W & 28°36'N (2). Eastward, towards the Blind Faith Rig and towards the area west of the Delta House Rig the northeastern edge of the cleaner blue water being circulated around the western side of the clockwise rotating Loop Current eddy is likely to provide additional offshore chances for fishing action particularly where we observed these conditions from 88°10-11'W & 28°11'N to 88°15'W & 28°20'N to 88°21'W & 28°30'N to 88°25-26'W & 28°45'N.

ROFFS™ Hours: Mon – Fri. 9:00 am – 7:00 pm EDT (sometimes later based on demand) with analysis order deadline before 3pm. We are now open on Saturdays 9AM to 4PM (sometimes we close earlier based on demand) analysis order deadline is 9:00am on Saturday. *Thank you for not sharing this analysis with non-paying anglers.* Remember you can order and/or purchase your fishing analyses from our website (<http://www.roffs.com/>) or by email (fishing@roffs.com). Verbal updates are free while on the water between 10:30 AM and 11:59 AM (eastern time).

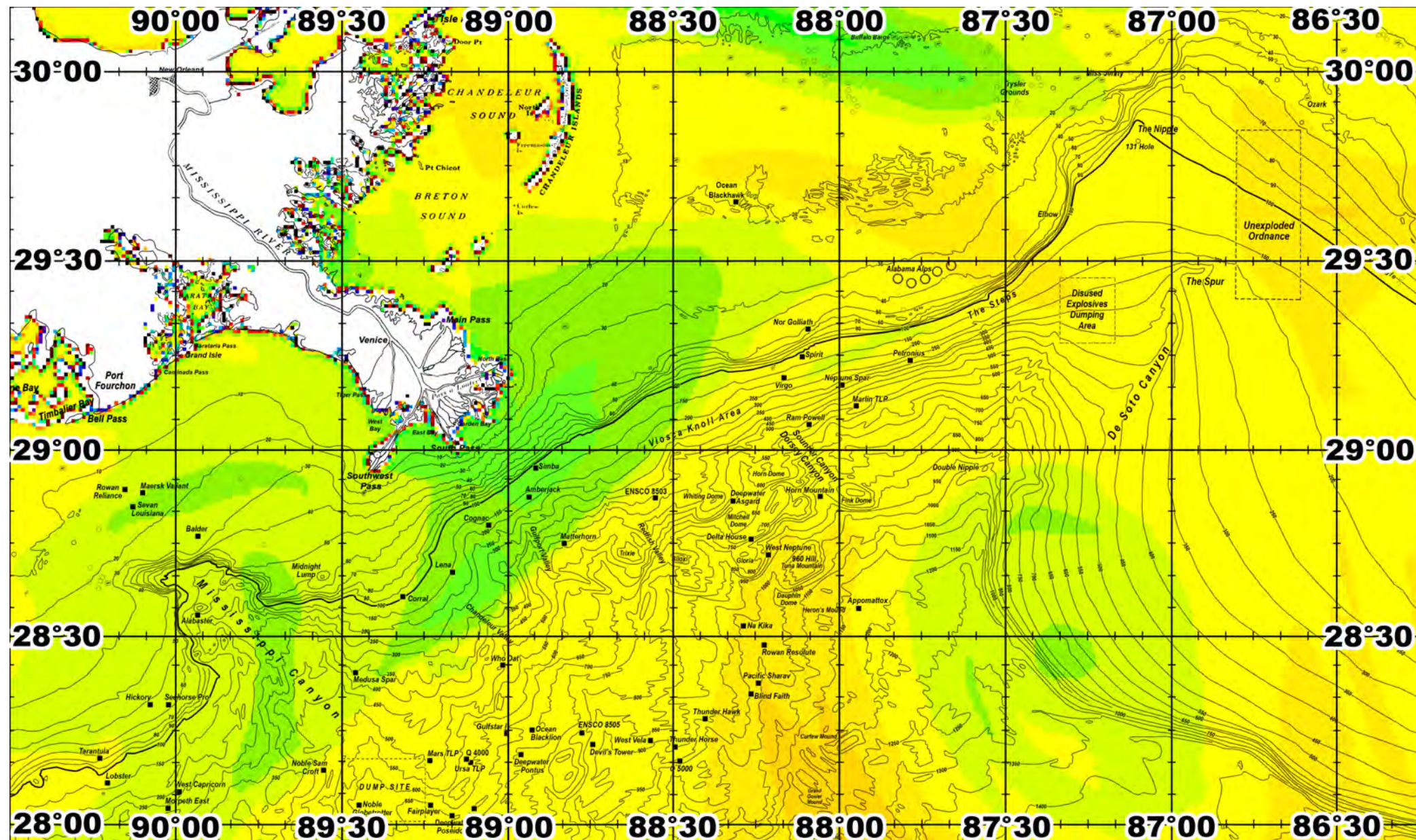






FATHOM SCIENCE

SST FORECAST for TOMORROW MORNING FISHING





OCEAN COLOR/CHLOROPHYLL FORECAST for TOMORROW MORNING

