



WWW.ROFFS.COM



FISHING@ROFFS.COM



321.723.5759



@ROFFSFISHING



FISHERIES OCEANOGRAPHIC ANALYSIS FOR THE LLOYD RIDGE TO THE 960 HILL OFFSHORE AREA (LAT./LONG)

UPDATED ON TUESDAY 14 JULY 2020 FOR TUESDAY P.M. AND WEDNESDAY FISHING ONLY

Based on a multiple factor oceanographic analysis, the indicated areas (hot spot dots) on the analysis mark the areas where bait concentrations are expected and where fishing action is expected to be better compared with other areas. Numbers inside of the hot spot dots indicate the number of consecutive days that we have seen favorable oceanographic conditions in that location. These areas are not based on dock rumors or hearsay fishing reports, they are based on oceanographic knowledge and expertise. You should start fishing where you recognize other signs of good fishing conditions near these marked areas (ie. rips/slicks, weed lines, birds, etc). It is very important to use your sea surface temperature (SST) gauge to locate the boundaries of the water masses, which are outlined in black. PLEASE REMEMBER, rather than trying to find water masses based on the absolute temperature values shown on the map, search for the relative change in SST where the water mass boundaries occur. Arrows indicate the main current direction. 1 fathom = approximately 6 feet. Afternoon SST is likely to be 1.0°F or more WARMER than indicated by the morning SST calibration on this analysis. NUMBERS IN PERENTHESIS AFTER LOCATIONS ARE NUMBER OF DAYS THAT SPOT HAS BEEN FAVORABLE. **Fathom Science SST and Ocean Color/Chlorophyll Forecasts now included on final two pages.**

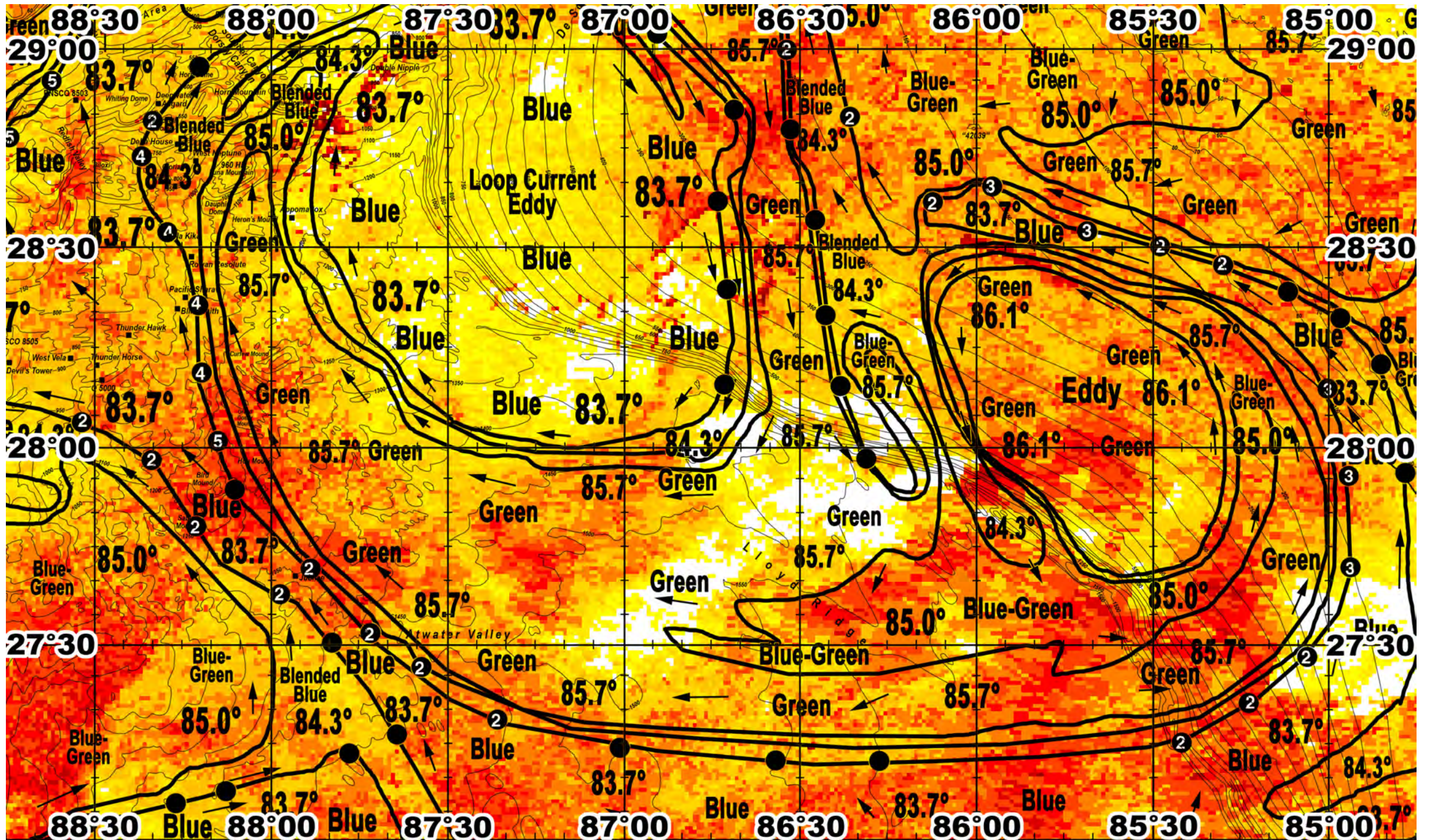
We were able to observe the offshore ocean conditions in this area relatively clearly today and we continue to be able to provide this update of the ocean conditions using a combination of high-resolution infrared SST from yesterday afternoon through this morning along with ocean color/chlorophyll satellite imagery from the past 18-24 hours. We have also included an ocean color image along with today's analysis created from a combination of ocean color/chlorophyll imagery from the past 18-24 hours in order for you to see the true water colors in this area. **We continue to provide cloud-free SST and ocean color/chlorophyll data from our new partner Fathom Science™. This data is cutting-edge, high resolution, cloud-free modeled data that has been evaluated and validated by ROFFS™ along with other oceanographic scientists and proven to be the most accurate cloud-free data available anywhere to guide you in the right direction to increase your chances for fishing action.** Overall, we continue to observe the clockwise circulation of the Loop Current eddy feature centered generally southeast of the Double Nipple towards 87°15'W & 28°40'N. As this feature continues to rotate in a clockwise direction it continues to circulate cleaner blue water originating from the area south of the Lloyd Ridge towards the Atwater Valley and then in a favorable northward inshore direction towards the area of the Thunder Horse/Thunder Hawk Rig, east/northeast of the Dump Site, east of the Chandeleur Valley and the Gulfport Valley, over the Redfish Valley, Viosca Knoll and Dorsey/Sounder Canyon areas, over the Ram Powell Rig, Marlin TLP Rig and now over the Petronius Rig and towards the Steps before turning southeastward south of the Spur region and southward over the De Soto Canyon. Inshore, cleaner blue-green to blended blue water also continues to occur west of Cape San Blas towards the area west of the Wings and Squiggles and towards the Unexploded Ordnance and Spur regions mainly due to the counter-clockwise rotation of the green water that is now centered towards the area southeast of the Pensacola South 42039 NOAA buoy towards 85°40'W & 28°05'-10'N.

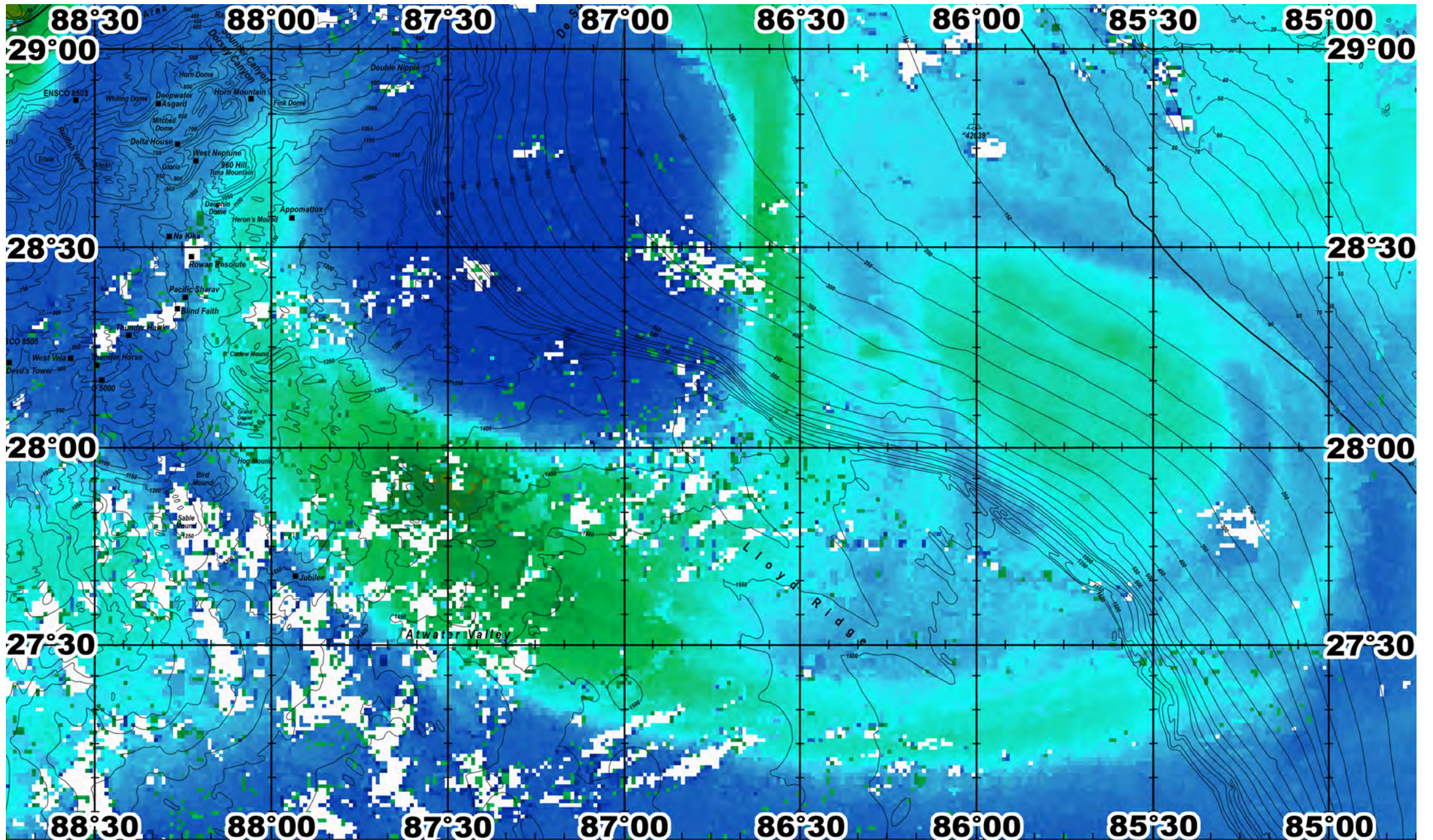
With this in mind, over the ledges of the De Soto Canyon and northwestward towards the area of the Steps where we observed the east/northeastern and northern edges of the clean blue water being circulated around the large Loop Current eddy increased overall chances for fishing action are likely to happen particularly where we observed these conditions from 86°42'W & 28°10'-11'N to 86°42'W & 28°53'-54'N to 86°44'W & 28°37'-38'N and also from 86°41'W & 28°50'N to 86°55'W & 29°02'N to 87°00'W & 29°07'N to 87°05'W & 29°13'-14'N to 87°11'W & 29°18'N to 87°20'W & 29°19'N to 87°32'W & 29°20'N. Inshore of the Petronius Rig the northern edge of the same cleaner blue water appears to have remained favorable for two days now and is likely to provide relatively better chances for action particularly towards 87°47'-48'W & 29°20'N (2) and 87°57'W & 29°20'-21'N (2). Continuing westward over the ledges inshore northwest of the Viosca Knoll area and southwestward between the Redfish Valley and the Gulfport Valley and east of the Chandeleur Valley area the northwestern edges of the same cleaner blue water and the strong green to blue water color change are also likely to provide good action with tuna, wahoo, dolphin and billfish particularly where we observed these conditions for multiple days now from 88°27'-28'W & 29°15'N (2) to 88°29'-30'W & 29°11'N (2) to 88°32'W & 29°03'N (5) to 88°38'-39'W & 28°55'N (5) to 88°44'-45'W & 28°47'N (5) to 88°49'W & 28°36'N (5) and also further southwestward from 88°54'W & 28°25'N (4) to 89°00'-01'W & 28°16'N (4) to 89°07'W & 28°10'-11'N (4) to 89°14'W & 28°02'N (2). Eastward, towards the area west of the Grand Gosier Mound, east of the Blind Faith Rig and towards the Na Kika Rig and the Delta House Rig the eastern edges of the cleaner blue water being circulated around the western side of the clockwise rotating Loop Current eddy are likely to provide additional offshore chances for fishing action particularly where we

observed these conditions for multiple days now from 88°10'W & 28°00-01'N (5) to 88°11'W & 28°12'N (4) to 88°12'W & 28°21'N (4) to 88°18'W & 28°32-33'N (4) and also northwestward towards 88°22'W & 28°44'N (4) to 88°20-21'W & 28°49'N (2). Towards the Jubilee Rig and southeastward over the Atwater Valley good overall chances for fishing action occur where we observed the northeastern edge of the cleaner blue water particularly where we observed these conditions for two days now from 87°53'W & 27°41-42'N (2) to 87°43'W & 27°31-32'N (2) to 87°34'W & 27°26-27'N (2) to 87°22'W & 27°19'N (2).

Eastward, inshore north of the Lloyd Ridge area the western edge of the band of blue-green to blended blue water being pushed northwestward northwest of the counter-clockwise circulation of green water is likely to provide some increased chances for fishing action where we observed these conditions over the ledges from 86°31-32'W & 28°48'N to 86°28'W & 28°34-35'N to 86°25-26'W & 28°20'N to 86°23'W & 28°09-10'N to 86°18-19'W & 27°58-59'N. South of the Pensacola South NOAA 42039 buoy and inshore southeastward over the ledges the northeastern edge of the finger of cleaner blended blue to blue water being circulated around the counter-clockwise circulation of blue-green to green water appears to have remained favorable for two and three days now and may provide better chances for action particularly where we observed these conditions from 85°49'W & 28°28'N (2) to 85°59'W & 28°30'N (2) to 85°40-41'W & 28°32-33'N (3) to 85°58-59'W & 28°36-37'N (3) to 86°07'W & 28°38'N (2).

ROFFS™ Hours: Mon – Fri. 9:00 am – 7:00 pm EDT (sometimes later based on demand) with analysis order deadline before 3pm. We are now open on Saturdays 9AM to 4PM (sometimes we close earlier based on demand) analysis order deadline is 9:00am on Saturday. *Thank you for not sharing this analysis with non-paying anglers.* Remember you can order and/or purchase your fishing analyses from our website (<http://www.roffs.com/>) or by email (fishing@roffs.com). Verbal updates are free while on the water between 10:30 AM and 11:59 AM (eastern time).

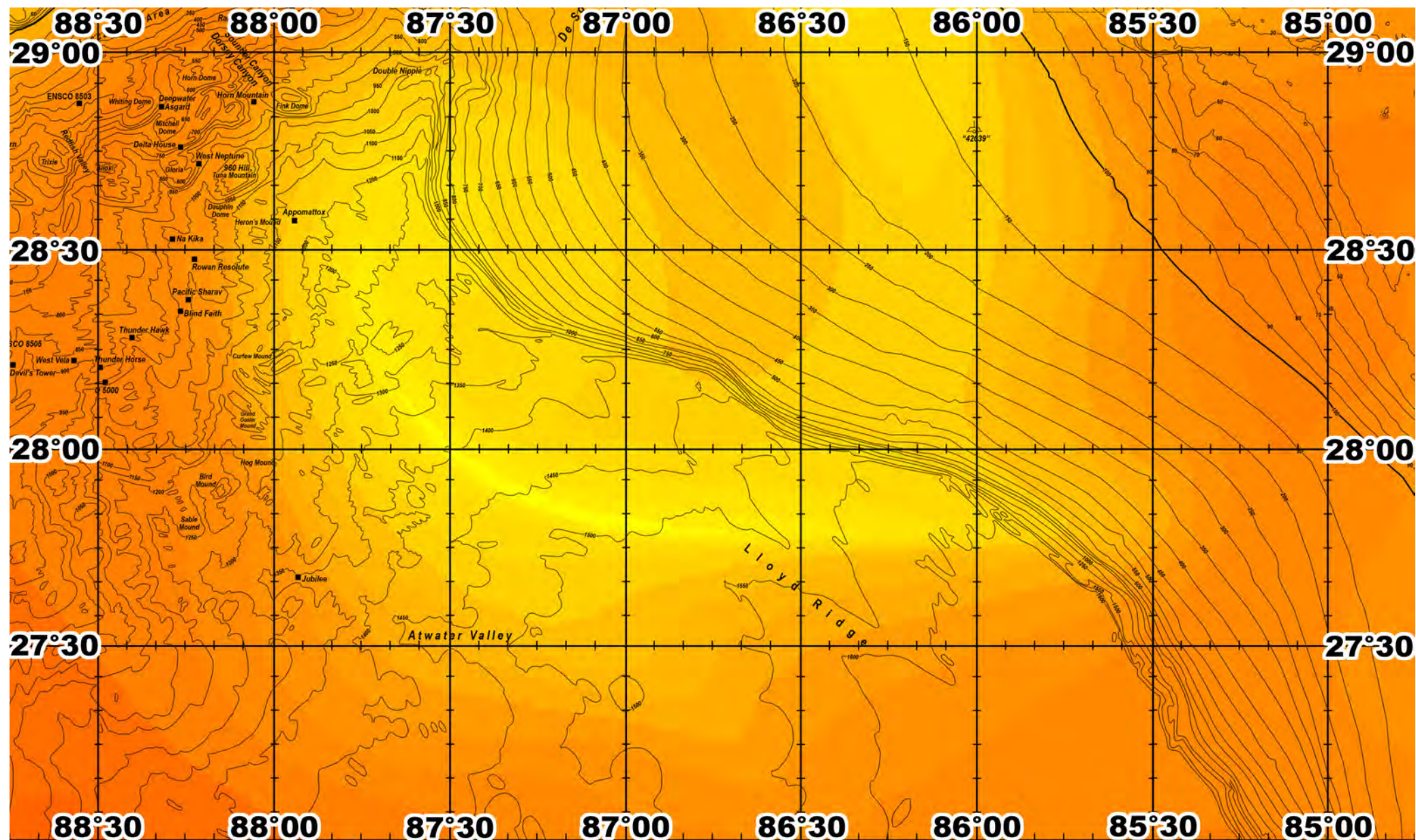






FATHOM SCIENCE

SST FORECAST for TOMORROW MORNING FISHING





FATHOM SCIENCE

OCEAN COLOR/CHLOROPHYLL FORECAST for TOMORROW MORNING

