



FISHING@ROFFS.COM

321.723.5759

@ROFFSFISHING

FISHERIES OCEANOGRAPHIC ANALYSIS FOR THE SOUTH PASS TO BULLWINKLE OFFSHORE AREA (LAT./LONG)

UPDATED ON THURSDAY 09 JULY 2020 FOR THURSDAY P.M. AND FRIDAY FISHING ONLY

Based on a multiple factor oceanographic analysis, the indicated areas (hot spot dots) on the analysis mark the areas where bait concentrations are expected and where fishing action is expected to be better compared with other areas. Numbers inside of the hot spot dots indicate the number of consecutive days that we have seen favorable oceanographic conditions in that location. These areas are not based on dock rumors or hearsay fishing reports, they are based on oceanographic knowledge and expertise. You should start fishing where you recognize other signs of good fishing conditions near these marked areas (ie. rips/slicks, weed lines, birds, etc). It is very important to use your sea surface temperature (SST) gauge to locate the boundaries of the water masses, which are outlined in black. PLEASE REMEMBER, rather than trying to find water masses based on the absolute temperature values shown on the map, search for the relative change in SST where the water mass boundaries occur. Arrows indicate the main current direction. 1 fathom = approximately 6 feet. Afternoon SST is likely to be 1.0°F or more WARMER than indicated by the morning SST calibration on this analysis. NUMBERS IN PERENTHESIS AFTER LOCATIONS ARE NUMBER OF DAYS THAT SPOT HAS BEEN FAVORABLE. **Fathom Science SST and Ocean Color/Chlorophyll Forecasts now included on final two pages.**

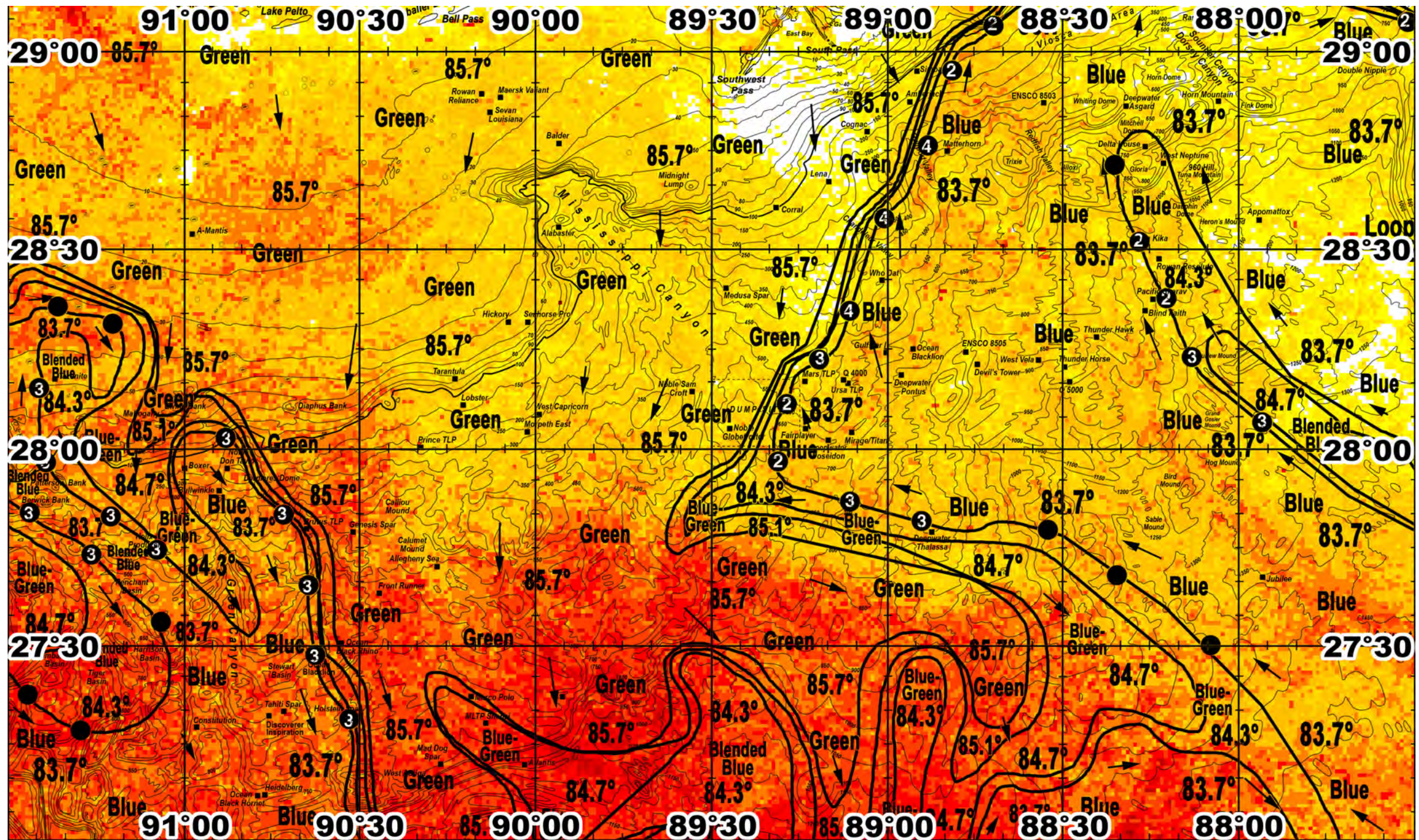
We were able to observe this area relatively clearly today and we continue to be able to provide this update of the ocean conditions using a combination of high-resolution infrared SST from this morning through this afternoon along with ocean color/chlorophyll satellite imagery from the past 24-36 hours. We also continue to include an ocean color image along with this analysis created from a combination of ocean color/chlorophyll imagery from the past 24-36 hours in order for you to see the true water colors in this area. **We continue to provide cloud-free SST and ocean color/chlorophyll data from our new partner Fathom Science™. This data is cutting-edge, high resolution, cloud-free modeled data that has been evaluated and validated by ROFFS™ along with other oceanographic scientists and proven to be the most accurate cloud-free data available anywhere to guide you in the right direction to increase your chances for fishing action.** Overall, we continue to observe the clockwise circulation of a large Loop Current eddy feature centered generally south of the Double Nipple towards 87°25-30'W & 28°30'N. As this feature continues to rotate in a clockwise direction it continues to push cleaner blue water in a favorable northward inshore direction towards the eastern side of the Dump Site, over the Chandeleur Valley, Gulfport Valley and Redfish Valley areas, inshore of the Viosca Knoll and Dorsey/Sounder Canyon areas, over the Ram Powell Rig, Marlin TLP Rig and south of the Petronius Rig and the Steps area before turning more southeastward southeast of the Steps region and southeastward over the De Soto Canyon. Inshore, cleaner blue-green to blended blue water also continues to occur west of Cape San Blas towards the Wings, Squiggles and Unexploded Ordnance regions with pockets of relatively cleaner blue-green water occurring westward towards the area inshore north and west of the Nipple and between the Elbow and the Spur region mainly due to the counter-clockwise rotation of the green water that is now centered well southeast of the Spur area (southeast of this area). Westward, a large plume of green water continues to move southward covering the Mississippi Canyon and west/southwestward towards the Diaphus Bank and east of the Green Canyon with relatively cleaner blended blue to blue water circulating in a general clockwise direction over the Patterson/Berwick Bank areas and southeastward over the Green Canyon.

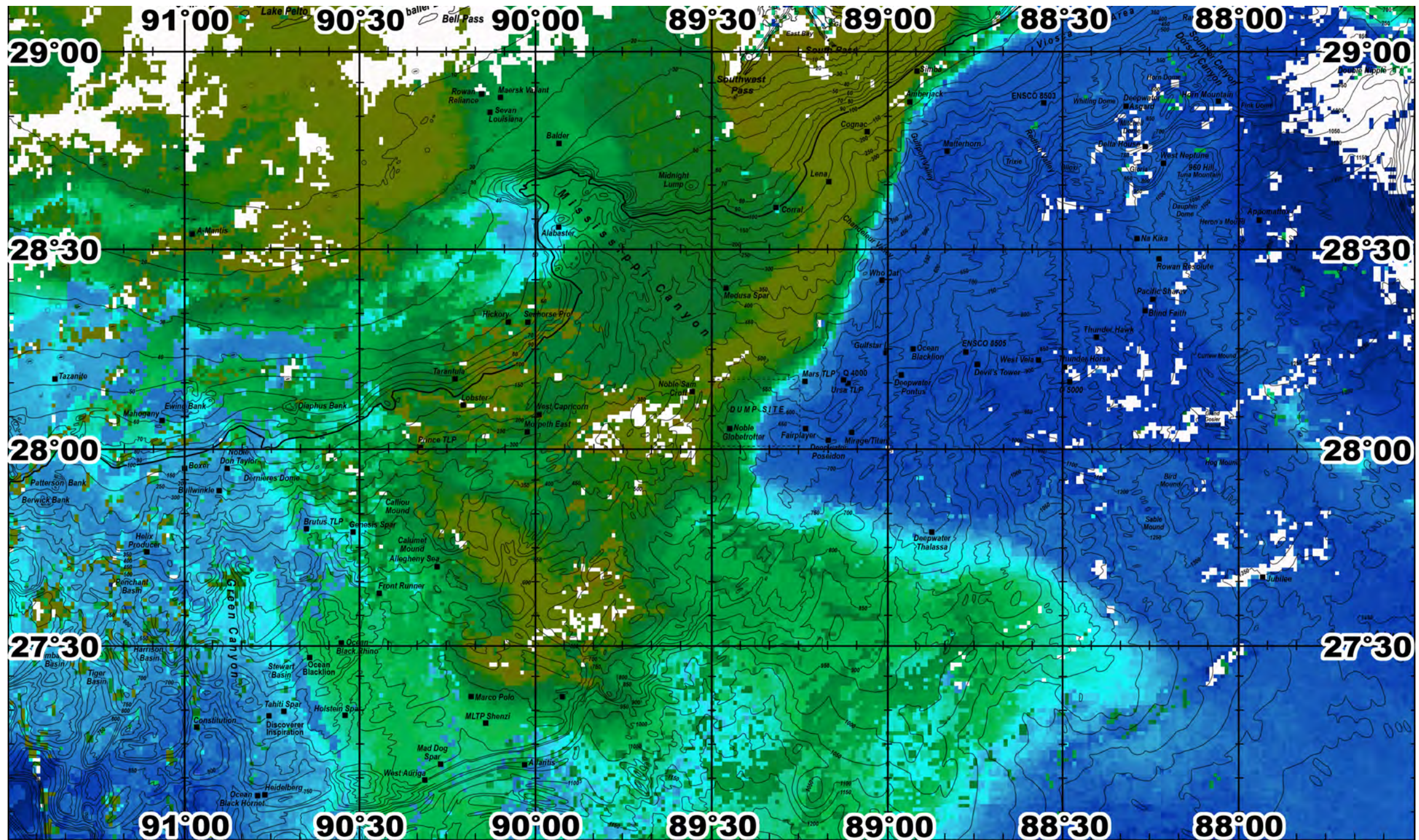
With this in mind, east of the Mississippi River Delta region over the ledges between the Marlin TLP Rig and the Spirit Rig and inshore of the Viosca Knoll area the northern edges of the same cleaner blue water and the strong green to blue water color change are also likely to provide good action with tuna, wahoo, dolphin and billfish particularly where we observed these conditions for multiple days now from 87°57-58'W & 29°10'N (5) to 88°09-10'W & 29°11-12'N (5) to 88°24'W & 29°12'N (3). Southwestward, southeast of the Mississippi River Delta region the northwestern edge of the clean blue water is also likely to provide good chances for fishing action particularly where we observed these conditions for multiple days now west of the Viosca Knoll, southwestward over the Gulfport Valley and the Chandeleur Valley and further southward towards the eastern side of the Dump Site from 88°42'W & 29°03-04'N (2) to 88°48'W & 28°57'N (2) to 88°54'W & 28°46'N (4) to 89°00'W & 28°35'N (4) and also from 89°07'W & 28°21'N (4) to 89°11'W & 28°14-15'N (3) to 89°16-17'W & 28°08'N (2) to 89°18-19'W & 27°59'N (2). Southeast of the Dump Site area towards the area south of the Sable Mound the southwestern edge of the cleaner blue water is likely to provide offshore yellowfin tuna, wahoo, dolphin and marlin action from 89°06'W & 27°53'N (3) to 88°54'W & 27°48'N (3) and perhaps southeastward from 88°32'W & 27°48'N to 88°20'W & 27°41'N to 88°05'W & 27°30'N. Northeastward, east of the Grand Gosier Mound, east of the Blind Faith Rig and towards the Na Kika Rig the northeastern edge of the cleaner blue water being circulated around the

western side of the clockwise rotating Loop Current eddy is likely to provide relatively good offshore chances for fishing action particularly where we observed these conditions for two and three days now from 87°57'W & 28°04'N (3) to 88°07-08'W & 28°14'N (3) to 88°12'W & 28°23'N (2) to 88°16-17'W & 28°31'N (2).

Westward, through the 60-70+ mile wide plume of brown to green Mississippi River Delta runoff water, the eastern leading edge of the western pool of cleaner blue-green to blended blue to blue water is likely to provide action particularly where we observed these conditions for three days now towards the Derniere's Dome area and offshore towards the Ocean Black Lion Rig from 90°54'W & 28°00-01'N (3) to 90°44-45'W & 27°50'N (3) to 90°41'W & 27°41'N (3) to 90°40'W & 27°28-29'N (3) to 90°32'W & 27°19'N (3). West/northwestward southwest of the Tanzanite Rig and offshore northeast of the Patterson Bank and Berwick Bank areas towards the Helix Producer Rig the northeastern edge of the relatively cleaner blended blue to blue water may also provide action particularly where we observed these conditions for three days now from 91°25'W & 28°09'N (3) to 91°23'W & 27°58-59'N (3) to 91°13-14'W & 27°49-50'N (3) to 91°05'W & 27°45'N (3). Inshore north/northwest of the Green Canyon the edges of the cleaner blue-green to blended blue water may provide some scattered chances for fishing action on your way offshore particularly where we observed favorable conditions for three days now from the 100 fathom ledge and towards the Berwick Bank and southeastward from 91°44'W & 27°54-55'N (3) to 91°28'W & 27°51'N (3) to 91°17'W & 27°44'N (3).

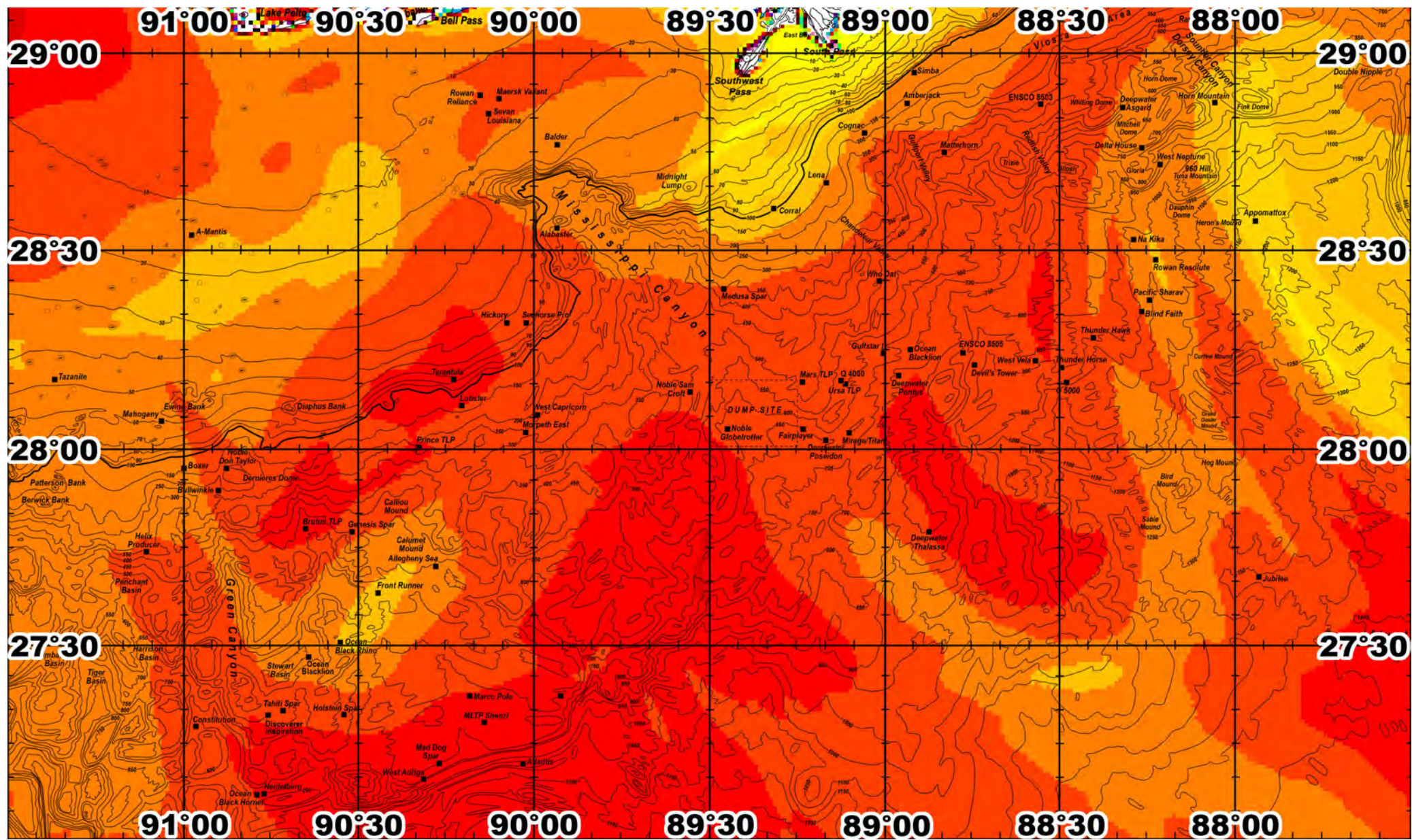
ROFFS™ Hours: Mon – Fri. 9:00 am – 7:00 pm EDT (sometimes later based on demand) with analysis order deadline before 3pm. We are now open on Saturdays 9AM to 4PM (sometimes we close earlier based on demand) analysis order deadline is 9:00am on Saturday. *Thank you for not sharing this analysis with non-paying anglers.* Remember you can order and/or purchase your fishing analyses from our website (<http://www.roffs.com/>) or by email (fishing@roffs.com). Verbal updates are free while on the water between 10:30 AM and 11:59 AM (eastern time).







SST FORECAST for TOMORROW MORNING FISHING





FATHOM SCIENCE

OCEAN COLOR/CHLOROPHYLL FORECAST for TOMORROW MORNING

