



**FISHERIES OCEANOGRAPHIC ANALYSIS FOR THE
HATTERAS (POINT TO THE BIG ROCK) OFFSHORE AREA (LAT/LONG)
UPDATED ON WEDNESDAY 15 JULY 2020 FOR WEDNESDAY P.M. & THURSDAY FISHING ONLY**

Based on a multiple factor analysis, the symbols (hot spot dots) mark the areas where bait concentrations are expected and where fishing action are expected to be better compared with other (non-marked) areas. These are not based on dock rumors or hearsay fishing reports. Fishing reports are stated as such. You should start fishing where you recognize other signs of good fishing conditions near these marked areas. It is very important to use your sea surface temperature (sst°) gauge to locate the boundaries of the water masses, which are outlined. Rather than trying to find water based on the absolute temperature values shown on the map, search for the relative change in sst where the water mass boundaries occur. Arrows indicate the main current direction. Numbers inside of the dots indicate the number of consecutive days that we have seen favorable conditions in that location. 1 fathom = approximately 6 feet. Afternoon SST is likely to be 1.0°F or greater than indicated by the morning calibration on this analysis. NUMBERS IN PARENTHESIS AFTER LOCATIONS ARE NUMBER OF DAYS THAT SPOT HAS BEEN FAVORABLE. Fathom Science SST and Ocean Color/Chlorophyll Forecasts now included on final two pages.

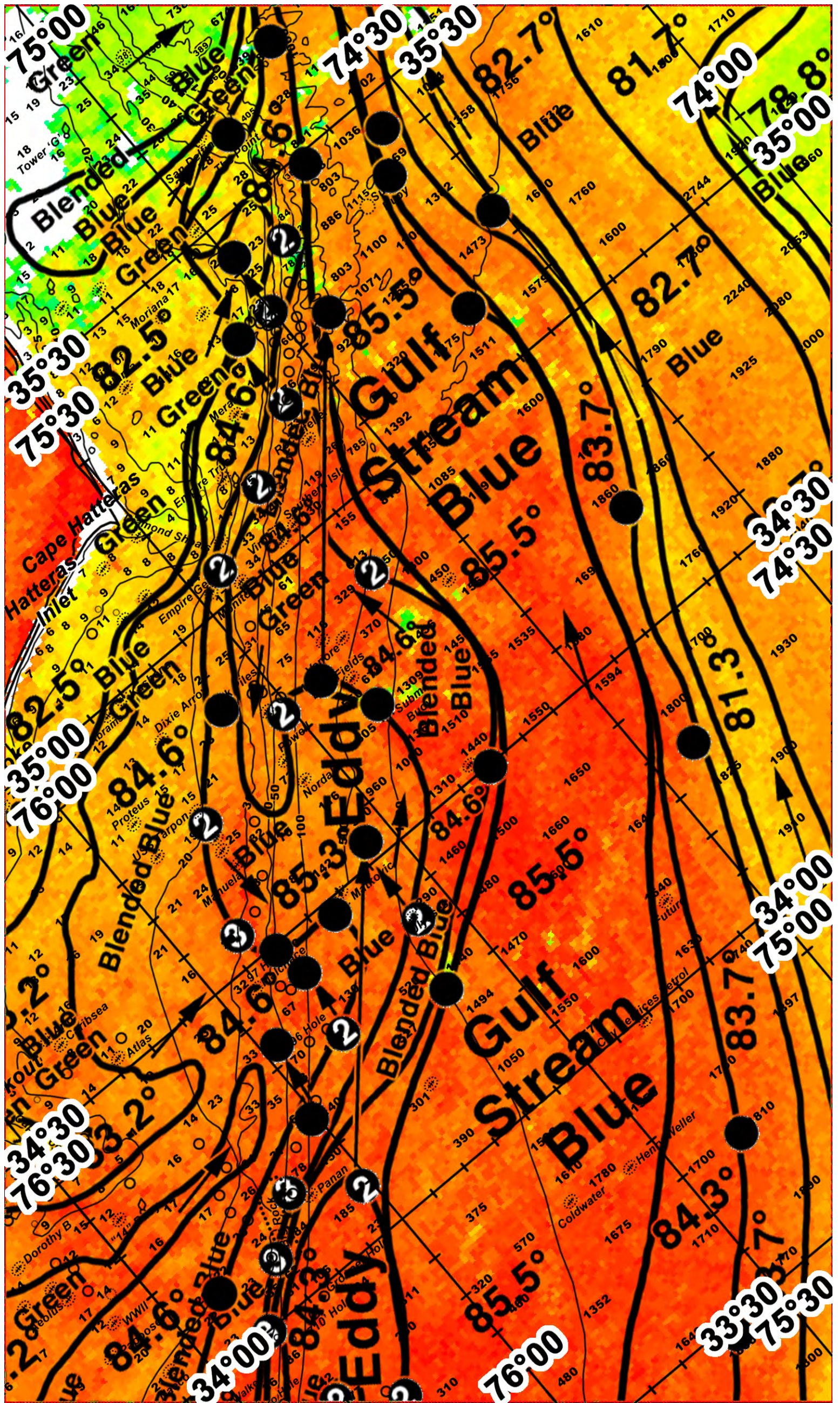
We were able to use today's infrared sst° and MODIS/VIIRS/Sentinel chl/ocean color satellite imagery for this analysis area to follow the oceanographic conditions for the past three days. Overall, we have observed a relatively large Gulf Stream eddy south of Cape Hatteras (centered near 75°30'W & 34°40'N), which is helping to pull cooler (82°F-83°F) blue green water offshore from Cape Lookout. A smaller Gulf Stream eddy formation has been observed south of Cape Lookout (centered near 76°12'W & 33°55'N). This eddy formation will likely be located east/southeast of Cape Lookout by tomorrow morning. As this eddy formation moves to the northeast, we anticipate warmer (84°F/85°F) blue/blended blue water mass boundary conditions to push inshore north of the 96 Hole east/southeast of Cape Lookout. The eastern side of the Gulf Stream appears to meander northwards to the east of Cape Hatteras as a narrow filament of cooler (81°F) blue water moves northeast from 2000 to 1500 fathom depths east of Cape Hatteras. We have included an ocean color/chlorophyll composite image from this afternoon so you can get a sense of where the bluer and greener water is located (email only, white=clouds).

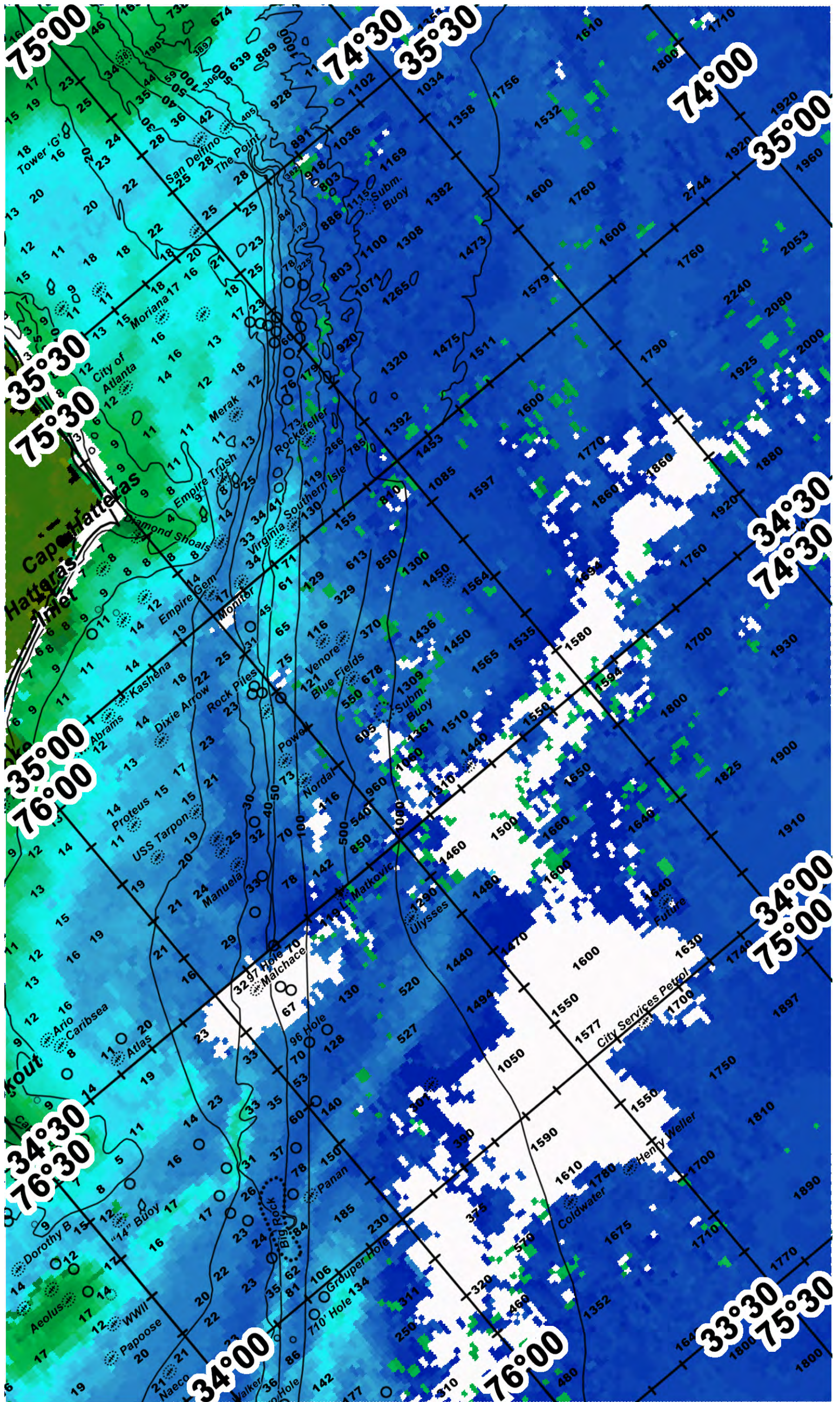
Warm water note: The water is relatively warm (79°-82°F) and thus, the better chances for fishing action will likely occur from using fishing techniques that place your hooks deeper in the water column closer to the strike zone of the fish. We suggest using planers, deeper dredges, chunking, and jigging techniques, as well as, using live bait dropped relatively deep into the water column to improve your hookup rate.

With this in mind, the better chances for tuna, dolphin, wahoo, sailfish, and marlin fishing action are likely to occur near Big Rock (near 76°08'W & 34°10'N (3), 76°15'W & 34°05'N (3), and 76°20'W & 34°00'N (3)) where favorable (84/85°F) blue/blended blue water mass boundary conditions have been observed for three days. On your way offshore, keep a keen eye out for weedlines, birds, bait, and other signs of life as these are classic signs of water mass boundary conditions as these boundaries may push inshore by two to five miles by tomorrow morning. These conditions suggest good chances for fishing action to occur. You may also try fishing north and northeast of the 96 Hole (from near 76°00'W & 34°22'N to 75°35'W & 34°32'N) where we anticipate these warmer (84/85°F) blue/blended blue water mass boundary conditions are likely to push towards by tomorrow morning. However, if you were interested in heading southwest of Big Rock, we have observed similar water mass boundary conditions over the 30-50 fathom good bottom (from near 76°30'W & 33°52'N to 76°45'W & 33°42'N) for the past day. These conditions suggest increased chances for fishing action to occur as well.

The next best chances for tuna, dolphin, wahoo, and sailfish fishing action are likely to occur off of Cape Hatteras (from near 75°25'W & 35°05'N (2), 75°15'W & 35°07'N (2), and 75°07'W & 35°12'N (2)) where favorable (84/85°F) blue green to blended blue water mass boundary conditions have been observed for two days. Keep in mind, as you head further northeast from Cape Hatteras, we anticipate these boundaries to be pushed further north (approximately near 75°05'W & 35°20'N and 75°00'W & 35°25'N) by tomorrow morning. These conditions suggest increased chances for fishing action to occur as well. If you were interested in fishing the eastern side of the Gulf Stream, we have observed cooler (81°F-84°F) blue water meander northwest towards the 1250 fathom depths east of Cape Hatteras (from near 74°40'W & 38°07'N to 74°35'W & 35°25'N). These conditions suggest additional increased chances for offshore tuna, dolphin, and billfish fishing action to occur. Additionally, we anticipate the western edges of the Gulf Stream to be pushed offshore, towards the 1000-1250 fathom depths and good bottom east/southeast of Cape Hatteras by tomorrow morning as the larger Gulf Stream eddy formation continues to move to the northeast as well.

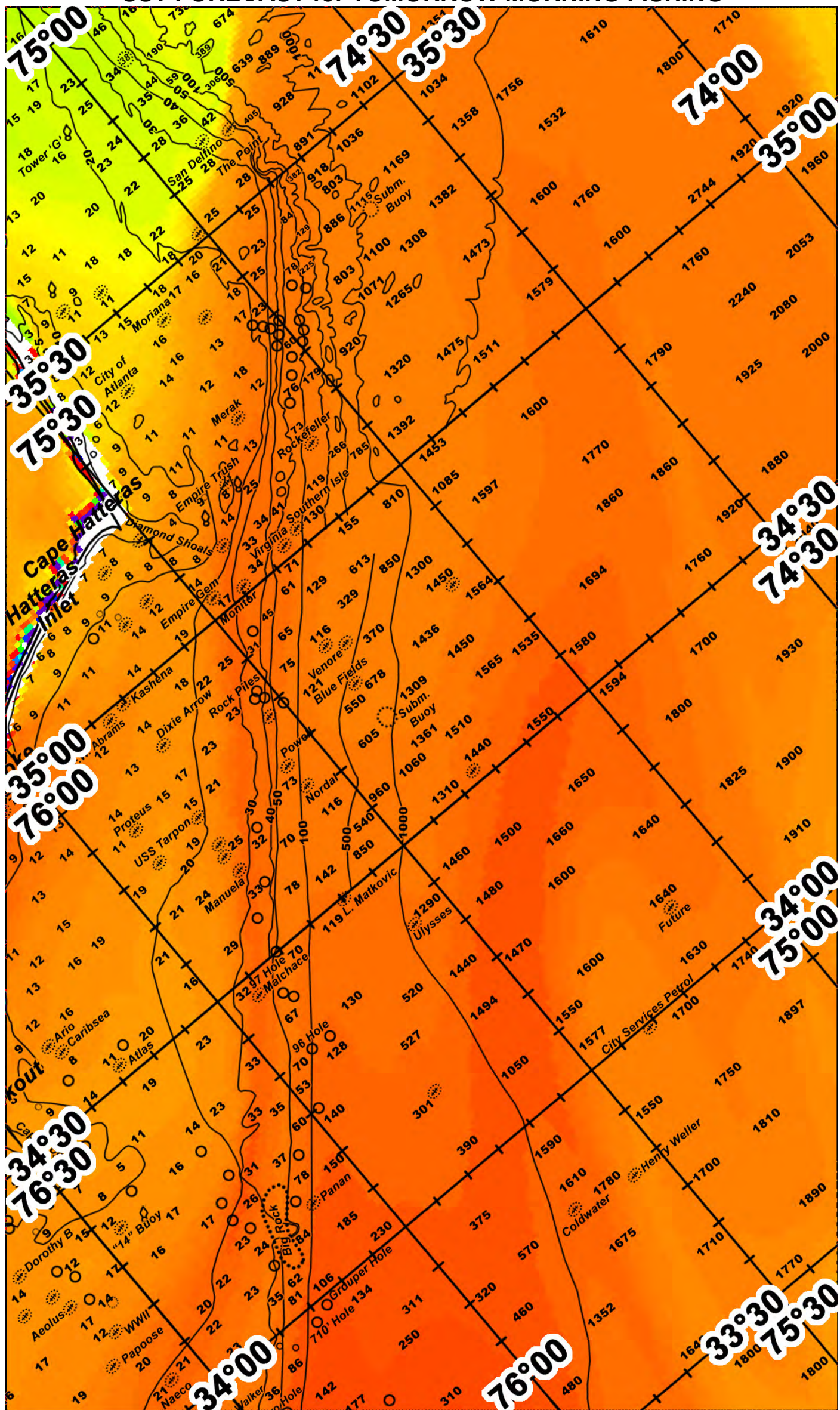
ROFFS™ Summer Hours: Mon – Fri. 9:00 am – 7:00 pm EDT (sometimes later based on demand) with analysis order deadline before 3pm. We are now open on Saturdays 9AM to 4PM (sometimes we close earlier based on demand) analysis order deadline is 9:00am on Saturday. Thank you for not sharing this analysis with non-paying anglers. Remember you can order and/or purchase your fishing analyses from our website (<http://www.roffs.com/>) or by email (fishing@roffs.com). Verbal updates are free while on the water between 10:30 AM and 11:59 AM (eastern time). **The ROFFS™ Graphic analysis is on the next page.**







SST FORECAST for TOMORROW MORNING FISHING





OCEAN COLOR/CHLOROPHYLL FORECAST for TOMORROW MORNING

