



WWW.ROFFS.COM



FISHING@ROFFS.COM



321.723.5759



@ROFFSFISHING

FISHERIES OCEANOGRAPHIC ANALYSIS

FOR THE OCRACOKE TO CAPE FEAR OFFSHORE AREA (LAT./LONG.)

UPDATED ON FRIDAY 04 SEPTEMBER 2020 FOR FRIDAY P.M. AND SATURDAY FISHING ONLY

Based on a multiple factor oceanographic analysis, the indicated areas (hot spot dots) on the analysis mark the areas where bait concentrations are expected and where fishing action is expected to be better compared with other (non-indicated) areas. Numbers inside of the hot spot dots indicate the number of consecutive days that we have seen favorable oceanographic conditions in that location. These areas are not based on dock rumors or hearsay fishing reports, they are based on oceanographic knowledge and expertise. You should start fishing where you recognize other signs of good fishing conditions near these marked areas (ie. rips/slicks, weed lines, birds, etc). It is very important to use your sea surface temperature (SST) gauge to locate the boundaries of the water masses, which are outlined in black. PLEASE REMEMBER, rather than trying to find water masses based on the absolute temperature values shown on the map, search for the relative change in SST where the water mass boundaries occur. Arrows indicate the main current direction. 1 fathom = approximately 6 feet. Afternoon SST is likely to be 1.0°F or more WARMER than indicated by the morning SST calibration on this analysis. NUMBERS IN PERENTHESIS AFTER LOCATIONS ARE NUMBER OF DAYS THAT SPOT HAS BEEN FAVORABLE.

ROFFS™ will be closed on Monday for Labor Day.

We are able to observe the ocean conditions in this area relatively clearly today using a combination of infrared and MODIS chlorophyll satellite imagery from early and late this afternoon. The morning estimated sst of the main body of the Gulf Stream is 85.8°F and is located offshore of the 100 fathom ledge. The offshore location of the Gulf Stream is due to the northward movement of two eddy features, centered near 75°55'W & 34°24'N and 76°20'W & 33°38'N, that will continue to move northward while pulling fingers of blue 84.4°F-85.1°F water over good bottom areas along and inshore of the 50-100 fathom ledges providing good chances for fishing action with tuna, dolphin, wahoo and billfish (sailfish and marlin) especially where conditions have remained favorable for multiple days. On your way offshore, keep a keen eye out for birds, bait and weed lines, as they are classic indicators for concentrations of fish. We now provide cloud-free SST and ocean color/chlorophyll data from our new partner Fathom Science™ for at 6am forecast for the next day. The cloud-free data will not be as accurate as the real satellite imagery, but it will guide you to the general area for the better features, especially when it is cloudy. For more information please visit <https://www.roffs.com/faqs/>.

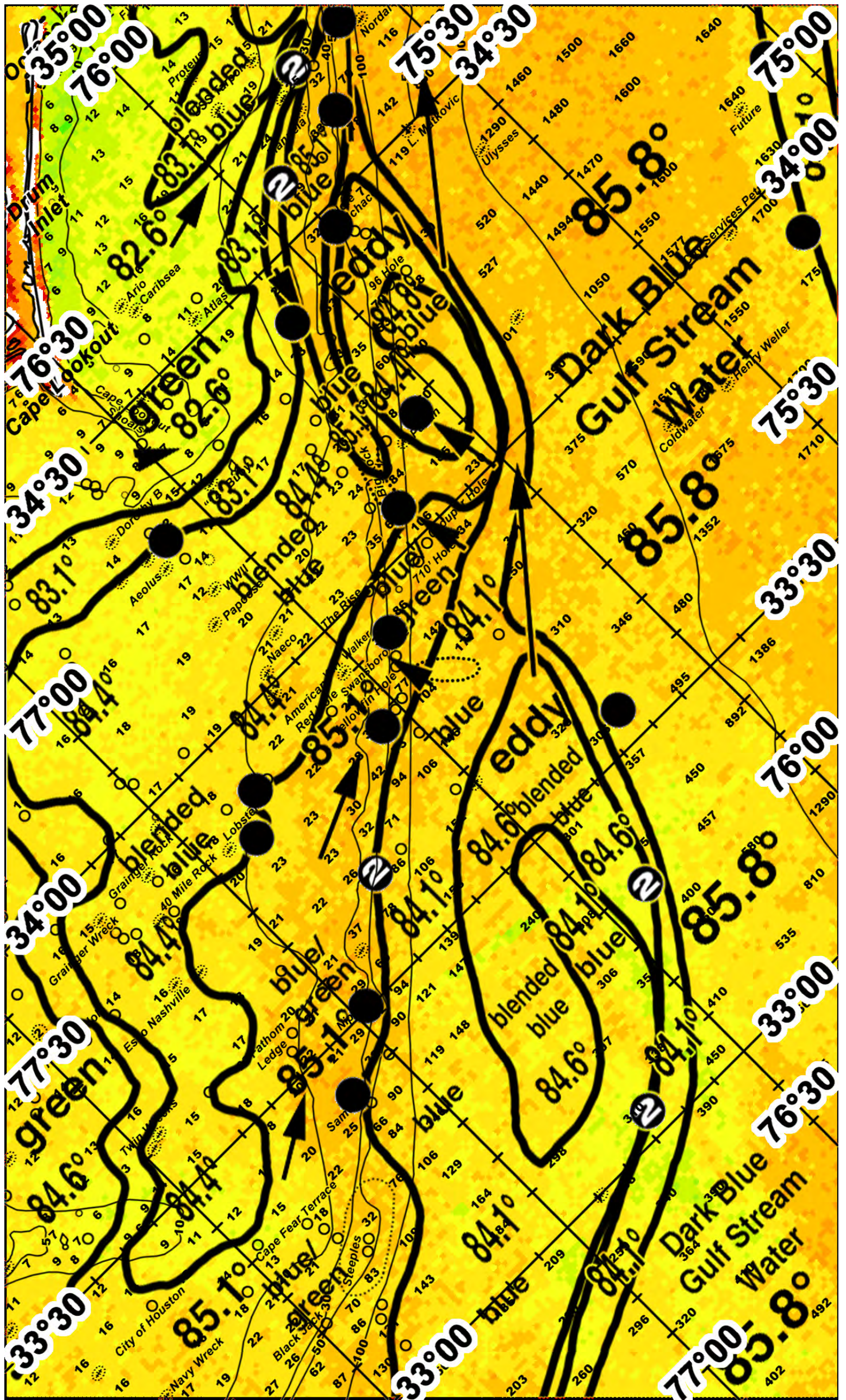
CAPE LOOKOUT: The ocean conditions offshore of Cape Lookout suggest increased chances for fishing action with tuna, dolphin, wahoo and marlin will occur along the inshore edges of a finger of blue 84.1°F water that will continue to push inshore over 50-100 fathoms by morning providing action where we believe it will occur near 76°03'W & 34°08'N, over Big Rock near 76°13'W & 34°02'N, 76°24'W & 33°55'N and near 76°32'W & 33°48'N. Offshore of Drum Inlet, the ocean conditions along the inshore edges of the eddy feature will also provide increased offshore chances for fishing action where it lies over 50-100 fathoms from near 75°55'W & 34°28'N, 75°43'W & 34°37'N, and 75°37'W & 34°43'N. On your way offshore, do not overlook the strong green to blue 83.1°F-85.1°F water mass boundary zone as it will provide good chances for fishing action with a combination of tuna, dolphin, wahoo and sailfish near 76°06'W & 34°24'N, 75°56'W & 34°34'N (2), and near 75°45'W & 34°43'N (2).

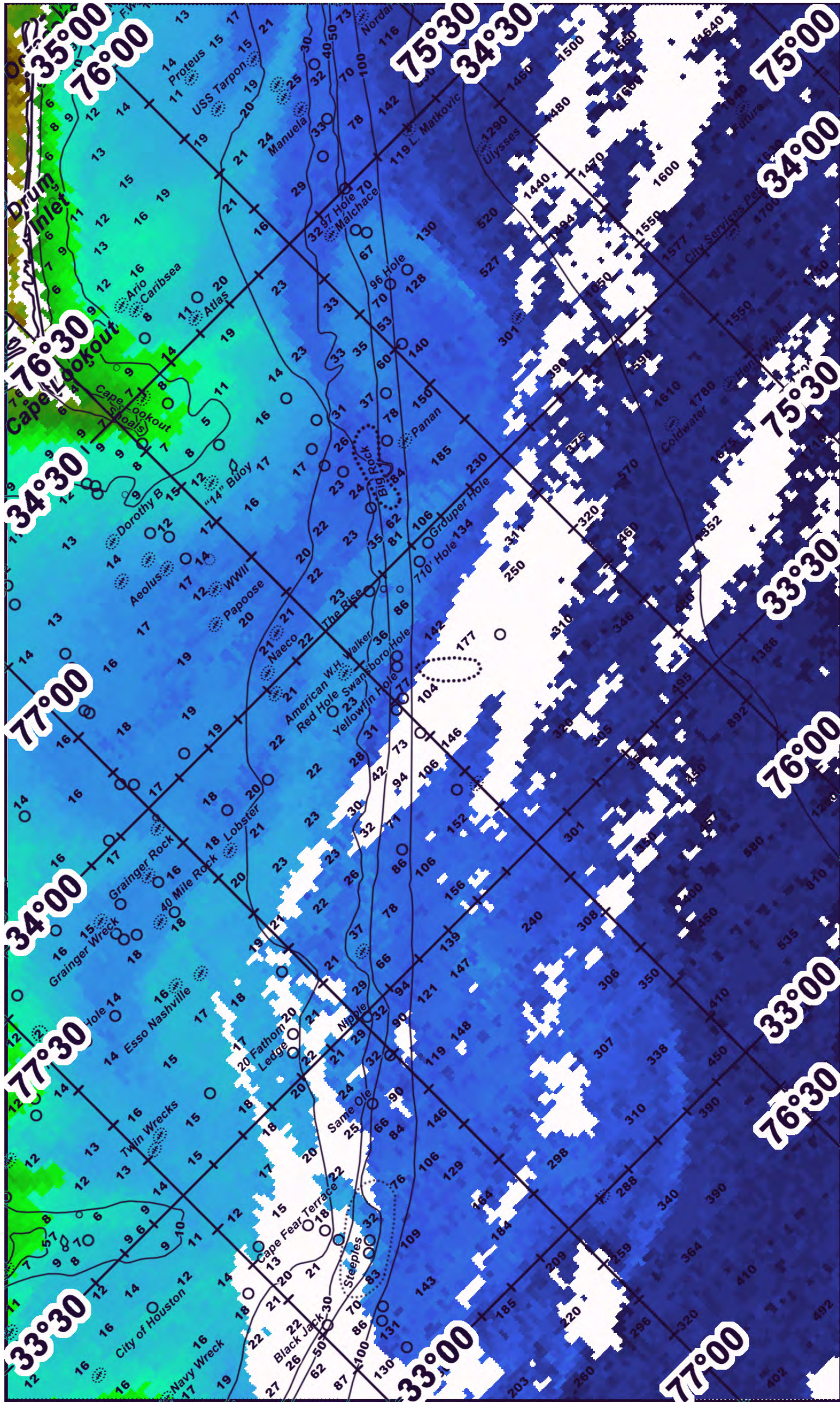
CAPE FEAR: The ocean conditions offshore of Cape Fear suggests increased chances for fishing action with tuna, dolphin, wahoo and marlin will occur where the inshore edges of the finger of blue 84.1°F water being pulled in over 100 fathoms and over good bottom near the Same Ole near 77°07'W & 33°54'N, the Nipple near 76°57'W & 33°30'N, and near 76°47'W & 33°37'N (2). If you find that the fishing action is slow and scattered, we suggest running offshore and fishing the western edges of the Gulf Stream where conditions have remained favorable for two days near 76°43'W & 33°02'N (2), 76°24'W & 33°19'N (2), and near 76°11'W & 33°33'N. Closer inshore, increased chances for sailfish action will occur along the edges of the unstable finger of blended blue 84.4°F water where it lies over good bottom near 76°49'W & 33°53'N and 76°53'W & 33°51'N.

EASTERN SIDE: At this time, we are not able to view the true eastern side of the Gulf Stream within this region.

ROFFS™ May Hours: Mon – Fri. 9:00 am – 7:00 pm EDT (sometimes later based on demand) with analysis order deadline before 3pm. We are now open on Saturdays 9AM to 4PM (sometimes we close earlier based on demand) analysis order deadline is 10:00am on Saturday. Thank you for not sharing this analysis with non-paying anglers. Remember you can order and/or purchase your fishing analyses from our website (<http://www.roffs.com/>) or by email (fishing@roffs.com). Verbal updates are free while on the water between 10:30 AM and 11:59 AM (eastern time).

The ROFFS™ Graphic analyses are on the next pages.

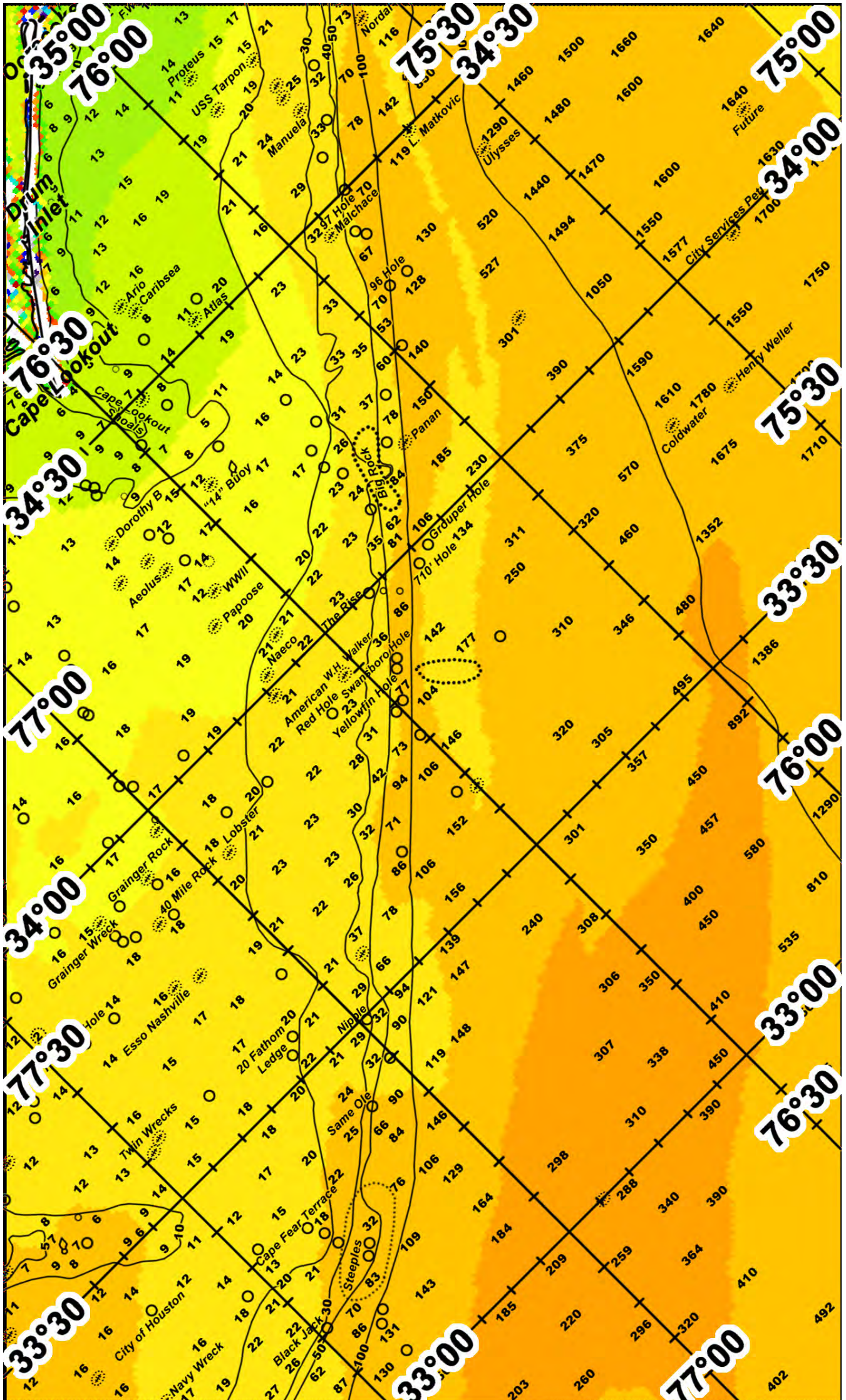






FATHOM SCIENCE

SST FORECAST for TOMORROW MORNING FISHING





OCEAN COLOR/CHLOROPHYLL FORECAST for TOMORROW MORNING

