

WWW.ROFFS.COMFISHING@ROFFS.COM

321.723.5759



@ROFFSFISHING

FISHERIES OCEANOGRAPHIC ANALYSIS

FOR THE CAPE FEAR INSHORE AREA (LAT./LONG)

UPDATED ON FRIDAY 24 JULY 2020 FOR FRIDAY P.M. AND SATURDAY FISHING ONLY

Based on a multiple factor oceanographic analysis, the indicated areas (hot spot dots) on the analysis mark the areas where bait concentrations are expected and where fishing action is expected to be better compared with other (non-indicated) areas. Numbers inside of the hot spot dots indicate the number of consecutive days that we have seen favorable oceanographic conditions in that location. These areas are not based on dock rumors or hearsay fishing reports, they are based on oceanographic knowledge and expertise. You should start fishing where you recognize other signs of good fishing conditions near these marked areas (ie. rips/slicks, weed lines, birds, etc). It is very important to use your sea surface temperature (SST) gauge to locate the boundaries of the water masses, which are outlined in black. PLEASE REMEMBER, rather than trying to find water masses based on the absolute temperature values shown on the map, search for the relative change in SST where the water mass boundaries occur. Arrows indicate the main current direction. 1 fathom = approximately 6 feet. Afternoon SST is likely to be 1.0°F or more WARMER than indicated by the morning SST calibration on this analysis. NUMBERS IN PERENTHESIS AFTER LOCATIONS ARE NUMBER OF DAYS THAT SPOT HAS BEEN FAVORABLE.

Although we are having issues with scattered cloud cover and haze, we are able to provide this update using a combination of infrared and MODIS chlorophyll satellite imagery from over the past two days. Overall, a large finger of blue and blended blue 86.2°F-86.5°F water had been pulled inshore of the 20 fathom ledge from the Cape Lookout Shoals and off the Frying Pan Shoals over the past week by a pair of large Gulf Stream eddy features that have moved north of Cape Lookout. Although the eddy features have moved on, the large finger of blue and blended blue water has remained in the area between 10 and 20 fathoms and will provide your better chances for fishing action with a combination of kingfish, tuna, dolphin, wahoo, and offshore for sailfish action over the next 12-24 hours. Inshore of 10 fathoms, we are able to observe large amounts of coastal upwelling (green and brown water) getting pulled in an unfavorable offshore direction over 10 fathoms where it has blended with the edges of the blended blue water. Although unstable and changing conditions occur in these regions, increased chances for kingfish action will occur where the two water masses meet over good bottom areas such as wrecks, or fish havens. On your way offshore, keep a keen eye out for working birds, bait and weed line formations, as they are indicators of foraging fish. We have also included modeled forecast charts of both SST and Chlorophyll at the end of the analysis. They provide a modeled look as to what the ocean conditions you will find at 6am tomorrow morning.

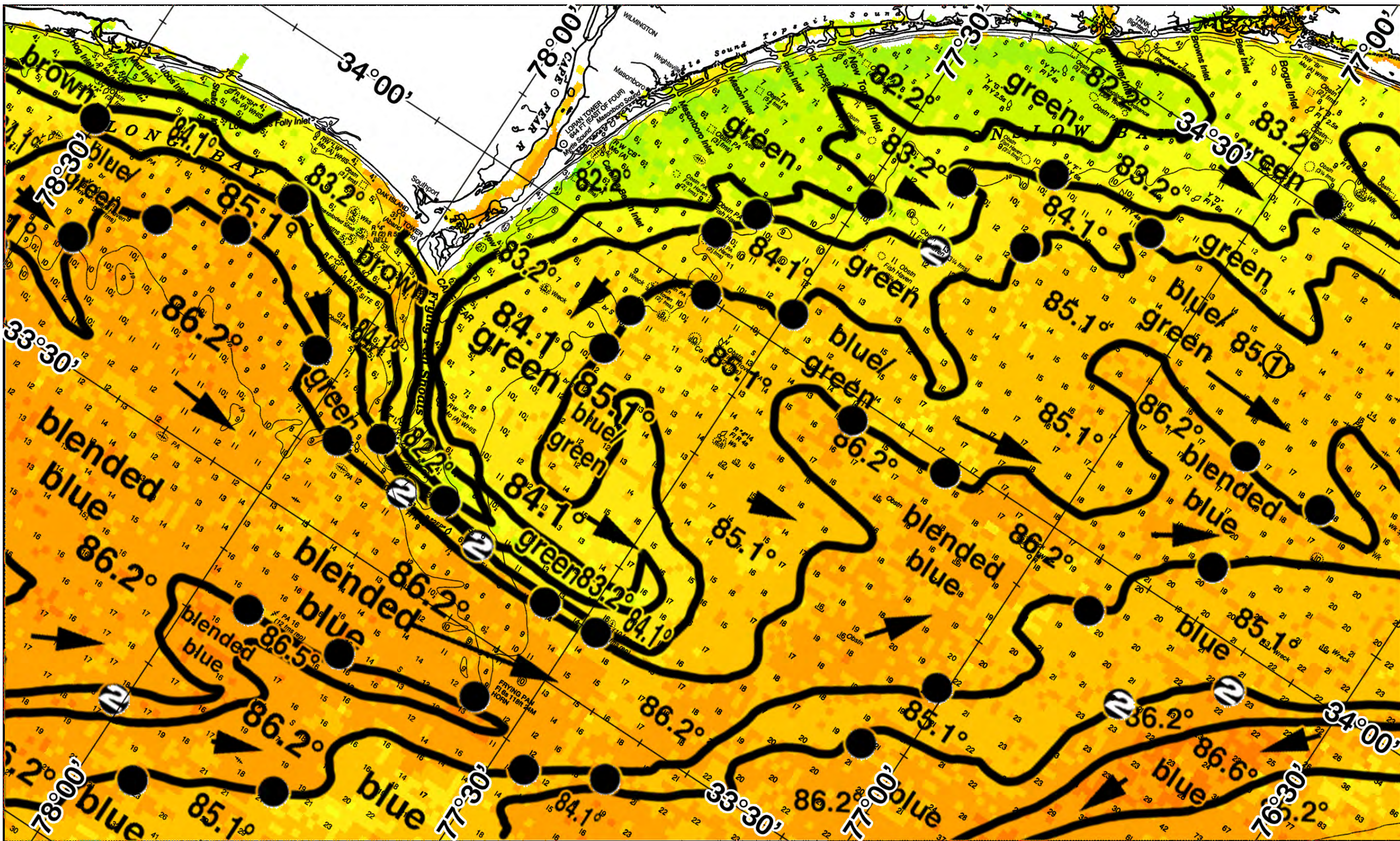
With this in mind, the ocean conditions out of Cape Fear suggest good chances for fishing action with kingfish, tuna, dolphin, and wahoo will occur along the green to blended blue 83.2°F-86.2°F water mass boundary zone where it lies over the 5-10 fathom depths of the Frying Pan Shoals and where conditions have remained favorable for the past two days from near 77°34'W & 33°35'N, 77°41'W & 33°35'N (2), 77°49'W & 33°35'N (2), 77°53'W & 33°38'N, 77°57'W & 33°36'N, and where the inshore edges of the blended blue 86.2°F water extend inshore of 10 fathoms near 78°02'W & 33°41'N, 78°14'W & 33°44'N and near 78°20'W & 33°13'N. If you find that the fishing action inshore is not as favorable as you would like, we suggest moving offshore towards 20 fathoms and fish the filament of 86.5°F blended blue water where it has remained favorable for the past two days near 78°12'W & 33°07'N (2) and 78°01'W & 33°11'N (2), and where it lies over the good bottom of the wrecks near 77°56'W & 33°23'N, 77°47'W & 33°24'N and over the tip of the Frying Pan Shoals near 77°35'W & 33°26'N. Additional offshore chances for tuna, dolphin and wahoo will occur along the inshore edges of the blue 85.1°F water where it lies from near 77°56'W & 33°37'N to 77°46'W & 33°12'N, 77°28'W & 33°23'N and near 77°21'W & 33°27'N.

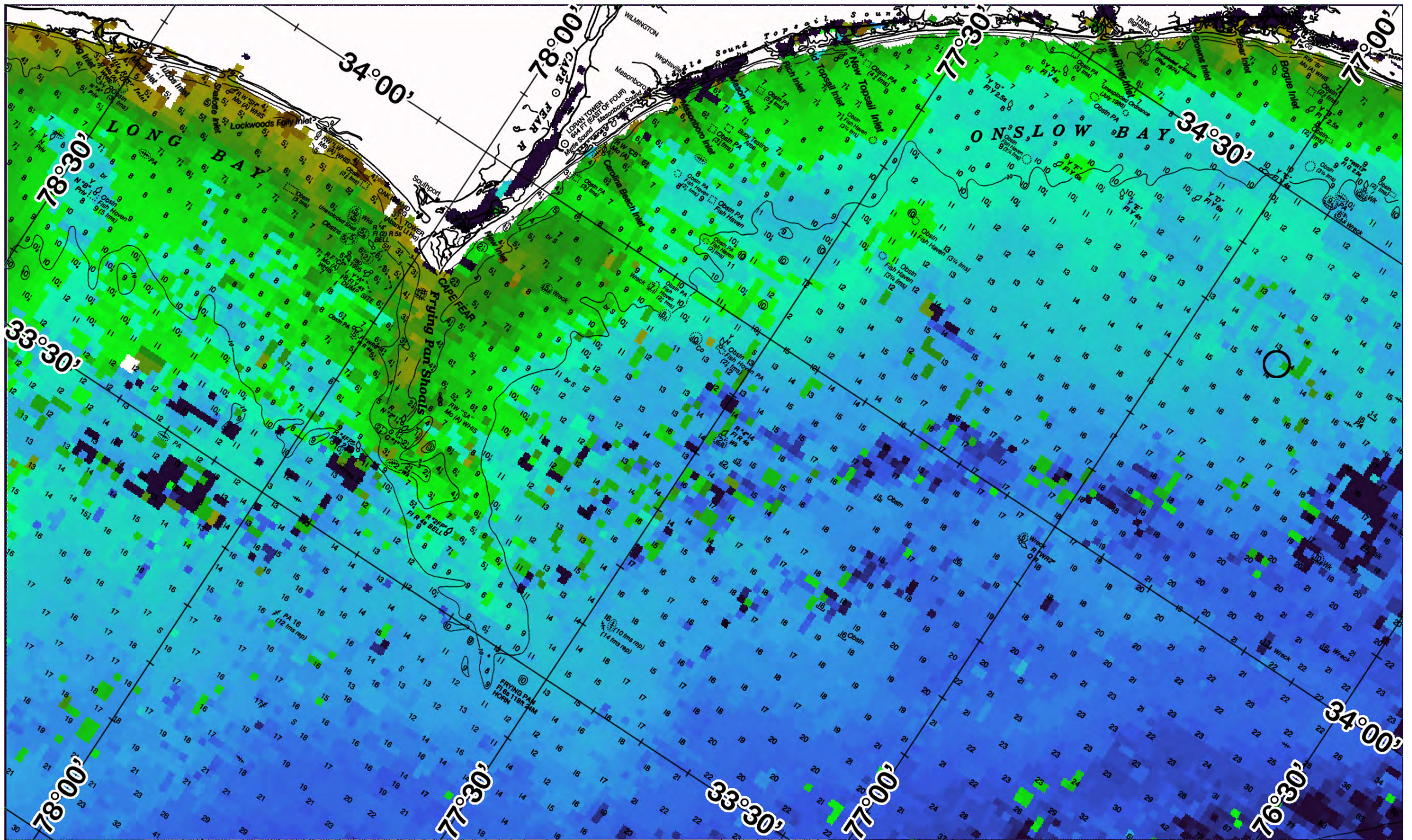
Moving north of Cape Fear and into Onslow Bay, the ocean conditions suggest increased chances for fishing action with kingfish will occur along the green to blue green water mass boundary zones that occur along the 10 fathom ledges near 77°42'W & 33°55'N, 77°37'W & 34°00'N, 77°38'W & 34°04'N, 77°36'W & 34°07'N, 77°29'W & 34°13'N, 77°24'W & 34°17'N, and near 77°18'W & 34°21'N. If you find that the action is not as favorable, we suggest moving off the 10 fathom ledge into a bit cleaner water and fish where the 85.1°F blue green water lies over good bottom structures near 77°30'W & 34°02'N, 77°23'W & 34°12'N (2), 77°15'W & 34°15'N, and near 77°07'W & 34°22'N. Further offshore, increased chances for sailfish action may occur along the edges of the blended blue 86.2°F water where it also lies over good bottom near 77°20'W & 33°58'N, 77°10'W & 33°59'N, 76°47'W & 34°12'N, and 76°40'W & 34°12'N, as well as, over 20 fathoms near 76°47'W & 34°04'N, 76°54'W & 33°57'N and near 77°01'W & 33°45'N. Additional offshore chances for action may also occur along the inshore edges of a finger of blue 86.2°F Gulf Stream water where it has remained favorable for two days near 76°40'W & 33°57'N (2), and near 76°47'W & 33°52'N (2).

Continued on next page...

The ROFFS™ Hours: Mon – Fri. 9:00 am – 7:00 pm EDT (sometimes later based on demand) with analysis order deadline before 3pm. We are now open on Saturdays 9AM to 4PM (sometimes we close earlier based on demand) analysis order deadline is 10:00am on Saturday. *Thank you for not sharing this analysis with non-paying anglers.* Remember you can order and/or purchase your fishing analyses from our website (<http://www.roffs.com/>) or by email (fishing@roffs.com). Verbal updates are free while on the water between 10:30 AM and 11:59 AM (eastern time).

The ROFFS™ Graphic analyses are on the next pages.

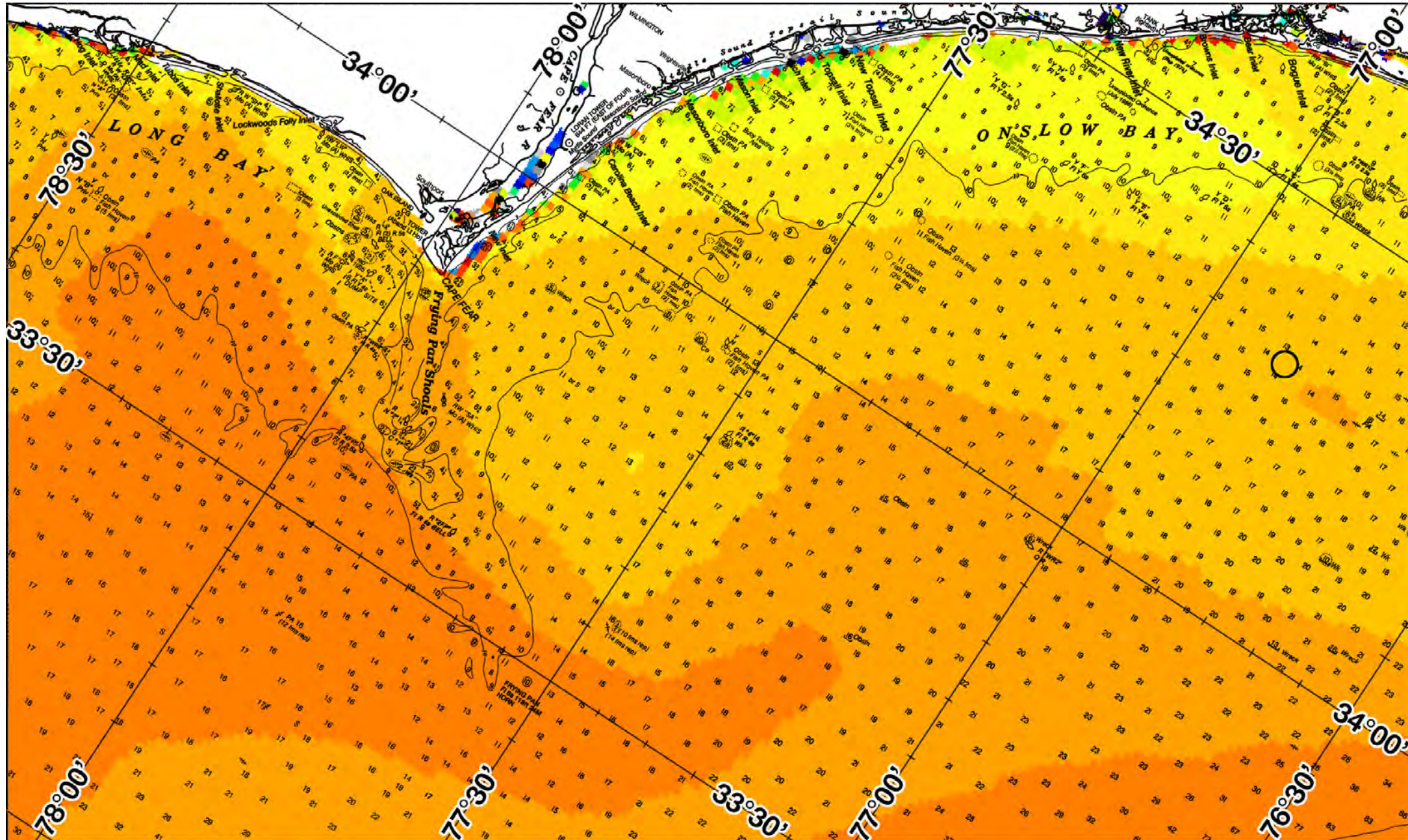






FATHOM SCIENCE

SST FORECAST for TOMORROW MORNING FISHING





FATHOM SCIENCE

OCEAN COLOR/CHLOROPHYLL FORECAST for TOMORROW MORNING

