



WWW.ROFFS.COM



FISHING@ROFFS.COM



321.723.5759



@ROFFSFISHING



**FISHERIES OCEANOGRAPHIC ANALYSIS FOR THE SAVANNAH INSHORE AREA (LAT./LONG.)
UPDATED ON FRIDAY 07 AUGUST 2020 FOR FRIDAY P.M. & SATURDAY FISHING ONLY**

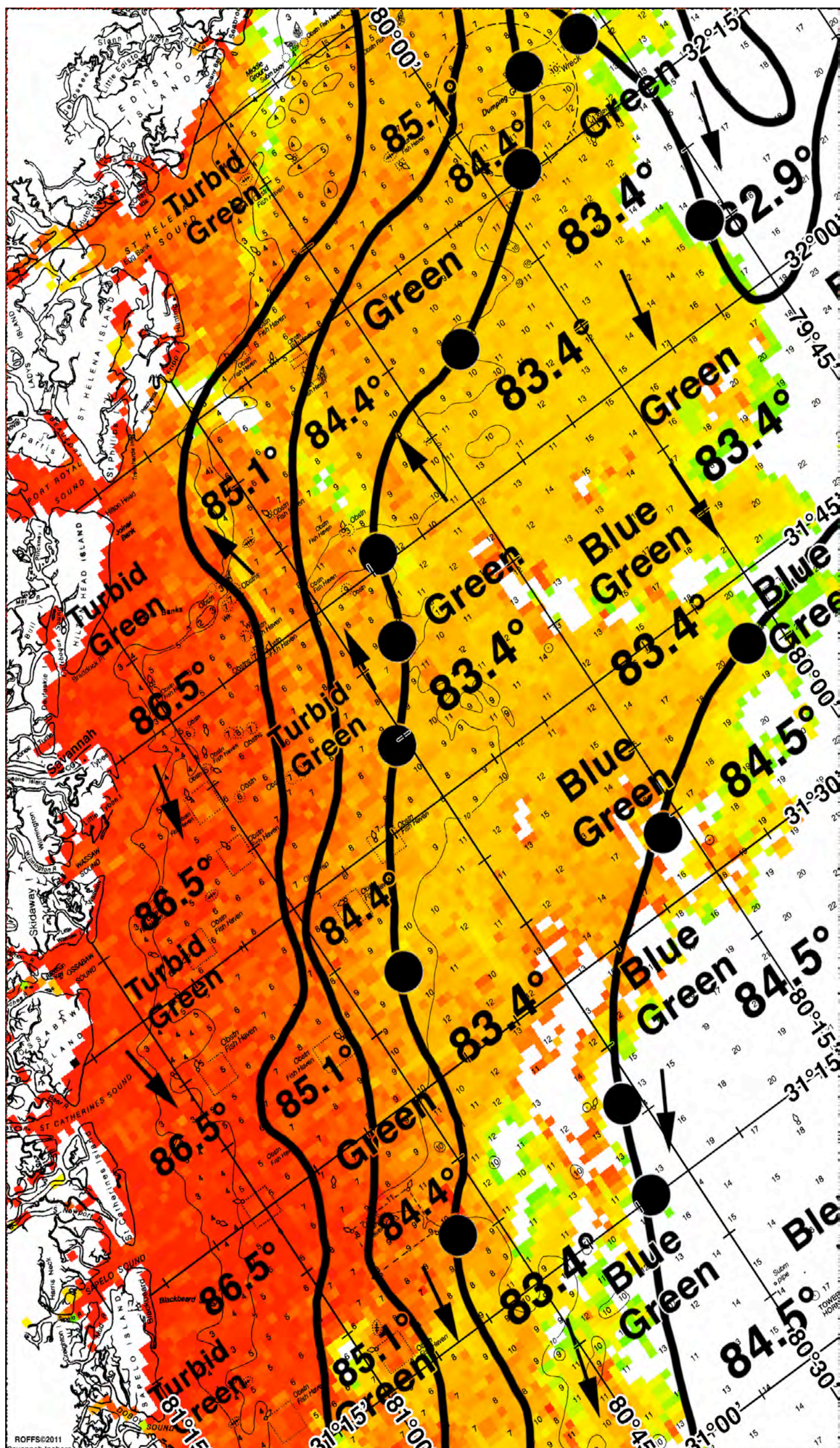
Based on a multiple factor oceanographic analysis, the indicated areas (hot spot dots) on the analysis mark the areas where bait concentrations are expected and where fishing action is expected to be better compared with other areas. Numbers inside of the hot spot dots indicate the number of consecutive days that we have seen favorable oceanographic conditions in that location. These areas are not based on dock rumors or hearsay fishing reports, they are based on oceanographic knowledge and expertise. You should start fishing where you recognize other signs of good fishing conditions near these marked areas (ie. rips/slicks, weed lines, birds, etc). It is very important to use your sea surface temperature (SST) gauge to locate the boundaries of the water masses, which are outlined in black. PLEASE REMEMBER, rather than trying to find water masses based on the absolute temperature values shown on the map, search for the relative change in SST where the water mass boundaries occur. Arrows indicate the main current direction. 1 fathom = approximately 6 feet. Afternoon SST is likely to be 1.0°F or more WARMER than indicated by the morning SST calibration on this analysis. NUMBERS IN PERENTHESIS AFTER LOCATIONS ARE NUMBER OF DAYS THAT SPOT HAS BEEN FAVORABLE. Fathom Science SST and Ocean Color/Chlorophyll Forecasts now included on final two pages.

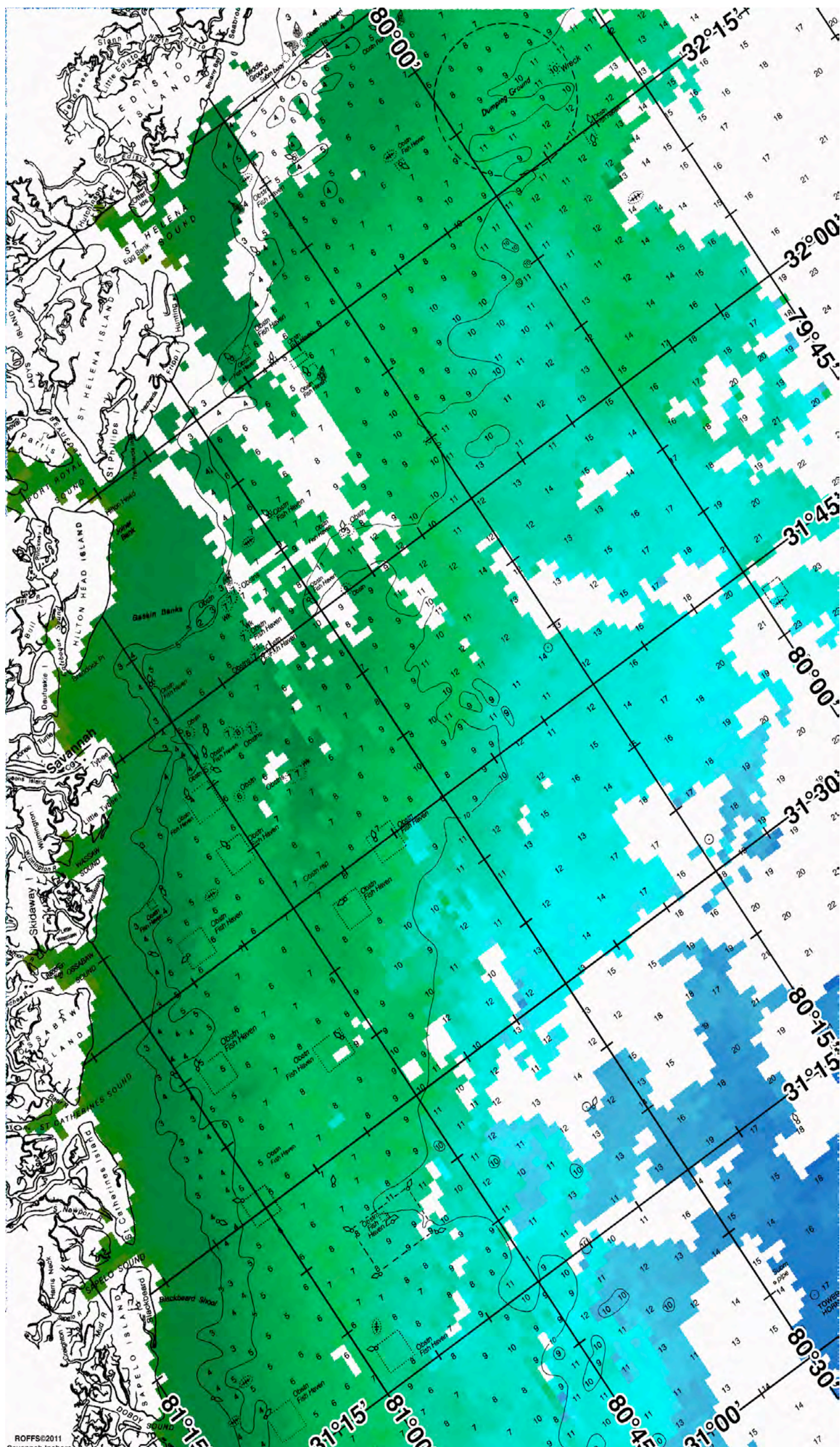
We now provide cloud-free SST and ocean color/chlorophyll data from our new partner Fathom Science™ for at 6am forecast for the next day. This data is cutting-edge, high resolution, cloud-free modeled data that has been evaluated and validated by ROFFS™ along with other oceanographic scientists and proven to be the most accurate cloud-free data available to guide you in the right direction to increase your chances for fishing action. The cloud-free data will not be as accurate as the real time satellite imagery, but it will guide you to the general area for the better features, especially when it is cloudy. For more information please visit <https://www.roffs.com/faqs/>

Due to persistent cloud cover we have used 24 hour infrared sst° and MODIS/VIIRS/Sentinel chl/ocean color composite satellite image for this analysis area. However, due to the substantial clouds the last few days we are not able to compare these conditions with the ocean conditions from the last few days. The most favorable conditions usually occur where the ocean conditions have existed for the longest, but today we cannot determine that with great confidence. Therefore, we will use a combination of stable water mass boundaries and strong temperature breaks over good bottom to select the areas with the most favorable conditions. Overall, we have observed mostly south/southwestern movement of water throughout this chart area. However, a relatively small, counter-clockwise center of rotation was observed pushing towards Port Royal Sound. A relatively unstable eddy formation has moved northeast towards the South Ledge, pushing warmer (84°F) blue green/blended blue water inshore of the Grand Banks towards 15-18 fathom depths southeast of Savannah. We have also included an ocean color/chlorophyll composite image from this afternoon so you can get a sense of where the bluer and greener water is located (email only, white=clouds).

With this in mind, the better chances for kingfish fishing action are likely to begin over the 8-10 fathom good bottom east of Savannah (from near 80°30'W & 31°50'N, 80°27'W & 31°55'N, and 80°25'W & 32°00'N), inshore of the Savannah Banks, where favorable (84.4°F-83.4°F) turbid green to cleaner green water mass boundary conditions have been observed. You may also try fishing the 10 fathom good bottom south of Savannah (from near 80°48'W & 31°22'N and 80°42'W & 31°37'N) where similar favorable water mass boundary conditions have also been observed. From here, head south or east, towards the 15-18 fathom good bottom (from near 80°32'W & 31°22'N, 80°17'W & 31°35'N, and 80°03'W & 31°42'N) where favorable (83.4°F-84.5°F) clean green/blue green to blended blue water mass boundary conditions have pushed inshore. These conditions suggest increased chances for fishing action to occur.

ROFFS™ Summer Hours: Mon – Fri. 9:00 am – 7:00 pm EDT (sometimes later based on demand) with analysis order deadline before 3pm. We are now open on Saturdays 9AM to 4PM (sometimes we close earlier based on demand) analysis order deadline is 10:00am on Saturday. Thank you for not sharing this analysis with non-paying anglers. Remember you can order and/or purchase your fishing analyses from our website (<http://www.roffs.com/>) or by email (fishing@roffs.com). Verbal updates are free while on the water between 10:30 AM and 11:59 AM (eastern time).

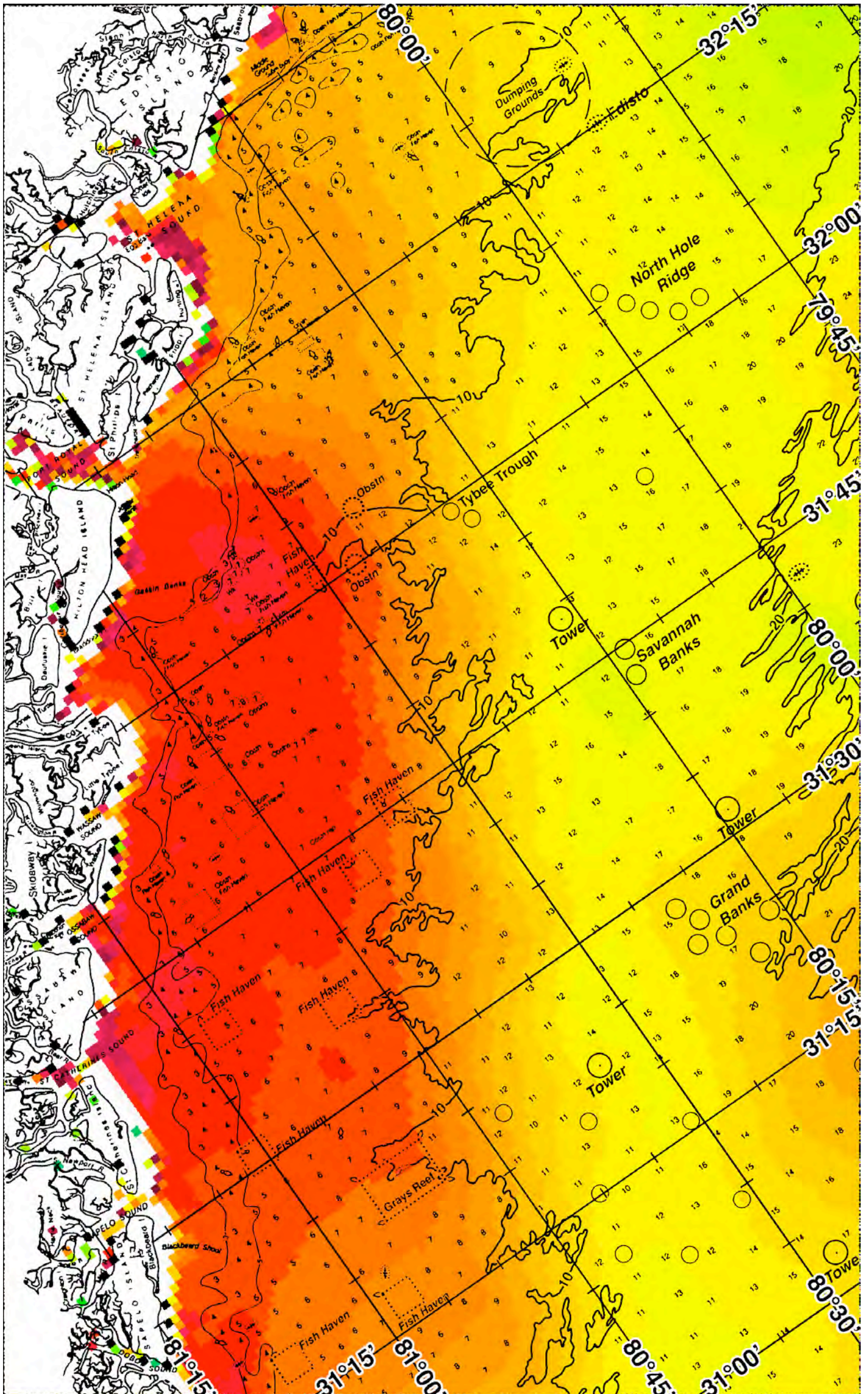






FATHOM SCIENCE

SST FORECAST for TOMORROW MORNING FISHING





OCEAN COLOR/CHLOROPHYLL FORECAST for TOMORROW MORNING

