



WWW.ROFFS.COM



FISHING@ROFFS.COM



321.723.5759



@ROFFSFISHING

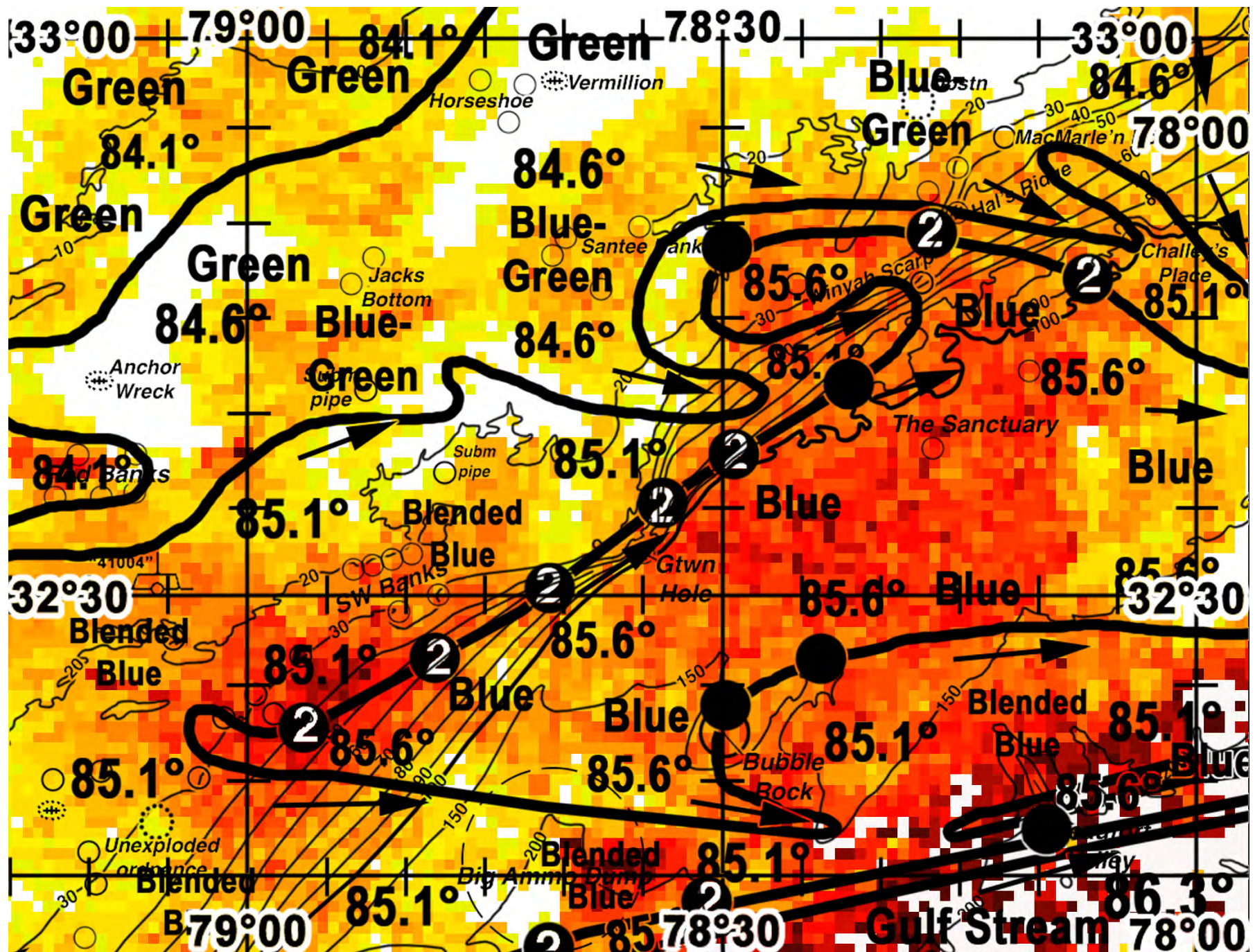
FISHERIES OCEANOGRAPHIC ANALYSIS FOR GEORGETOWN HOLE OFFSHORE AREA (LAT./LONG.) UPDATED ON THURSDAY 27 AUGUST 2020 FOR THURSDAY P.M. AND FRIDAY FISHING ONLY

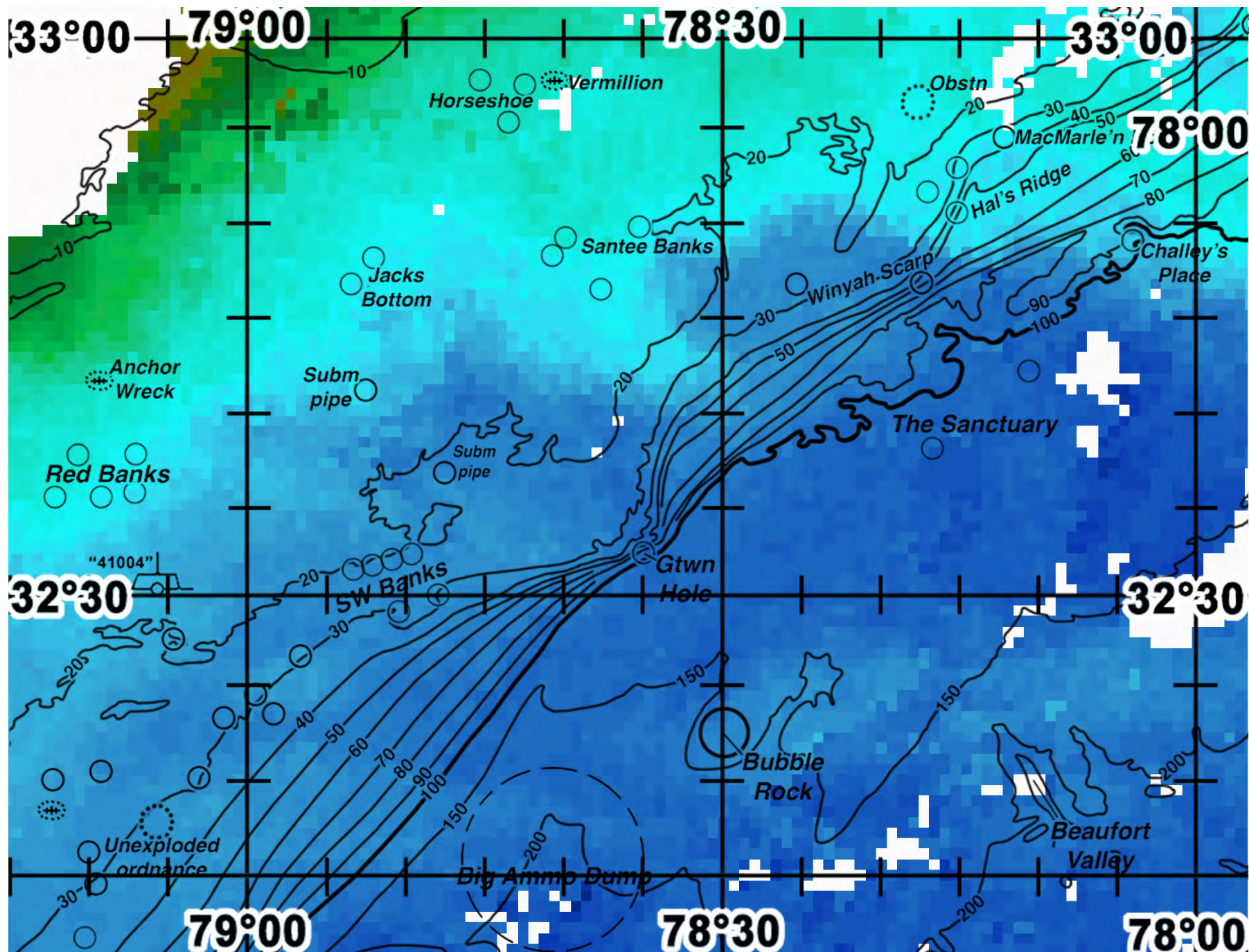
Based on a multiple factor oceanographic analysis, the indicated areas (hot spot dots) on the analysis mark the areas where bait concentrations are expected and where fishing action is expected to be better compared with other areas. Numbers inside of the hot spot dots indicate the number of consecutive days that we have seen favorable oceanographic conditions in that location. These areas are not based on dock rumors or hearsay fishing reports, they are based on oceanographic knowledge and expertise. You should start fishing where you recognize other signs of good fishing conditions near these marked areas (ie. rips/slicks, weed lines, birds, etc). It is very important to use your sea surface temperature (SST) gauge to locate the boundaries of the water masses, which are outlined in black. PLEASE REMEMBER, rather than trying to find water masses based on the absolute temperature values shown on the map, search for the relative change in SST where the water mass boundaries occur. Arrows indicate the main current direction. 1 fathom = approximately 6 feet. Afternoon SST is likely to be 1.0°F or more WARMER than indicated by the morning SST calibration on this analysis. NUMBERS IN PERENTHESIS AFTER LOCATIONS ARE NUMBER OF DAYS THAT SPOT HAS BEEN FAVORABLE. **Fathom Science SST and Ocean Color/Chlorophyll Forecasts now included on final two pages. SORRY, EMAIL ONLY.**

We continue to have challenges with offshore cloud cover, haze, high levels of atmospheric moisture and afternoon differential heating of the water masses. We were able to provide this update of the ocean conditions using a combination of high-resolution SST imagery along with ocean color/chlorophyll imagery from this morning through this afternoon and we have included an ocean color image derived from afternoon chlorophyll imagery in order for you to see the true surface water colors in this area. **We always believe that there is no substitution over real time satellite data. We continue to provide sea surface temperature (SST) and ocean color/chlorophyll modeled data from our new partners at Fathom Science. While its not perfect, this data is cutting-edge, high resolution, cloud-free modeled data that has been evaluated and validated by ROFFS™ and other oceanographic scientists and proven to be the most accurate cloud-free data available anywhere to guide you in the right direction, when completely cloudy, to increase your chances for fishing action over other areas. Please visit the FAQs to read more about the ROFFS™/Fathom Science™ partnership on our web site at <https://www.roffs.com/faqs/>. We have also included modeled forecast charts of both SST and Chlorophyll at the end of the analysis. They provide a modeled look as to what the ocean conditions you will find at 6am tomorrow morning.** Overall the estimated morning SST of the main body of the Gulf Stream is approximately 86.3°F and this feature continues to appear relatively stable and angling offshore northeastward as you progress northward towards the area offshore of Charleston northwest towards the 226 Hole and 380 Hole and towards the southern side of the Big Ammo Dump and towards the Beaufort Valley area. Inshore north/northwest of the main Gulf Stream edge we continue to observe a pool of cleaner blue water extending from the ledges south of the SW Banks, towards the Georgetown Hole and being pulled offshore eastward over the Sanctuary and further eastward around the circulation of a large counter-clockwise rotating eddy feature that is located northeast of this area. Today we have shown areas that are likely to provide increased overall chances for a combination of tuna, wahoo, dolphin and billfish compared to other non-indicated areas particularly where we observed favorable ocean conditions for two days now. Keep a keen eye out on your way offshore for birds, rips, slicks, and floating debris as they are often key indicators as bait concentrations and many times increase your chances for finding bigger pelagic fish.

With this in mind, on your way offshore from the Charleston area relatively good overall chances for a combination of tuna, dolphin, wahoo, billfish and even perhaps kingfish occur where we observed the northwestern edges of the relatively warmer blue water towards the ledges south of the SW Banks and northeastward towards the Georgetown Hole area from 78°56'W & 32°23'N (2) to 78°48'W & 32°26'N (2) to 78°40-41'W & 32°30'N (2) to 78°34'W & 32°35-36'N (2) to 78°30'W & 32°37'N (2). Northeastward towards the area between the Winyah Scarp and Hal's Ridge and offshore towards the 100 fathom ledge the north/northeastern edges of the same cleaner blue water are also likely to provide action again particularly where we observed these conditions for two days now from 78°17'W & 32°49'N (2) to 78°06-07'W & 32°47'N (2). Offshore towards the Bubble Rock area, increased chances for fishing action occur where we observed the northwestern edges of the blended blue to blue (85.1°F) being pulled offshore and towards the circulation of the counter-clockwise rotating eddy feature northeast of this area from 78°30'W & 32°24-25'N to 78°24'W & 32°27'N. Continuing southward towards the 226 Hole, the 380 Hole, towards the southern side of the Big Ammo Dump and offshore northeastward towards the Beaufort Valley the northwestern edges of the cleaner blue Gulf Stream water are likely to provide good offshore chances for action particularly where we observed these conditions for two days now from 78°40-41'W & 32°11'N (2) to 78°31'W & 32°13-14'N (2) and perhaps towards 78°10'W & 32°18'N.

ROFFS™ Hours: Mon – Fri. 9:00 am – 7:00 pm EDT (sometimes later based on demand) with analysis order deadline before 3pm. We are now open on Saturdays 9AM to 4PM (sometimes we close earlier based on demand) analysis order deadline is 9:00am on Saturday. *Thank you for not sharing this analysis with non-paying anglers.* Remember you can order and/or purchase your fishing analyses from our website (<http://www.roffs.com/>) or by email (fishing@roffs.com). Verbal updates are free while on the water between 10:30 AM and 11:59 AM (eastern time).

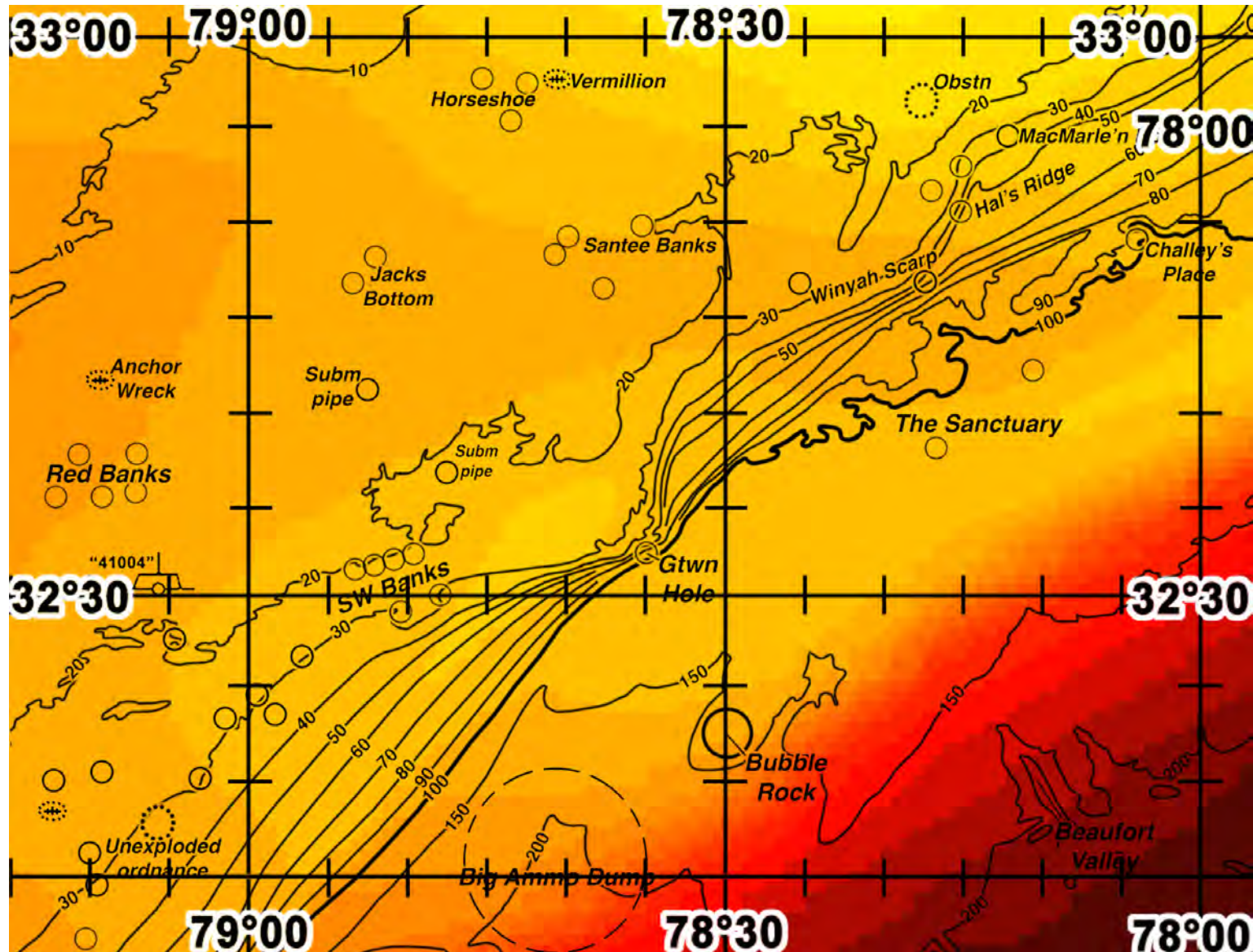






FATHOM SCIENCE

SST FORECAST for TOMORROW MORNING FISHING





FATHOM SCIENCE

OCEAN COLOR/CHLOROPHYLL FORECAST for TOMORROW MORNING

