



WWW.ROFFS.COM



FISHING@ROFFS.COM



321.723.5759



@ROFFSFISHING

FISHERIES OCEANOGRAPHIC ANALYSIS

FOR GEORGETOWN TO FERNANDINA OFFSHORE AREA (LAT./LONG.)

UPDATED ON WED. 02 SEPTEMBER 2020 FOR WED. P.M. AND THURS. FISHING ONLY

Based on a multiple factor oceanographic analysis, the indicated areas (hot spot dots) on the analysis mark the areas where bait concentrations are expected and where fishing action is expected to be better compared with other areas. Numbers inside of the hot spot dots indicate the number of consecutive days that we have seen favorable oceanographic conditions in that location. These areas are not based on dock rumors or hearsay fishing reports, they are based on oceanographic knowledge and expertise. You should start fishing where you recognize other signs of good fishing conditions near these marked areas (ie. rips/slicks, weed lines, birds, etc). It is very important to use your sea surface temperature (SST) gauge to locate the boundaries of the water masses, which are outlined in black. PLEASE REMEMBER, rather than trying to find water masses based on the absolute temperature values shown on the map, search for the relative change in SST where the water mass boundaries occur. Arrows indicate the main current direction. 1 fathom = approximately 6 feet. Afternoon SST is likely to be 1.0°F or more WARMER than indicated by the morning SST calibration on this analysis. NUMBERS IN PERENTHESIS AFTER LOCATIONS ARE NUMBER OF DAYS THAT SPOT HAS BEEN FAVORABLE. **Fathom Science SST and Ocean Color/Chlorophyll Forecasts now included on final two pages. SORRY, EMAIL ONLY.**

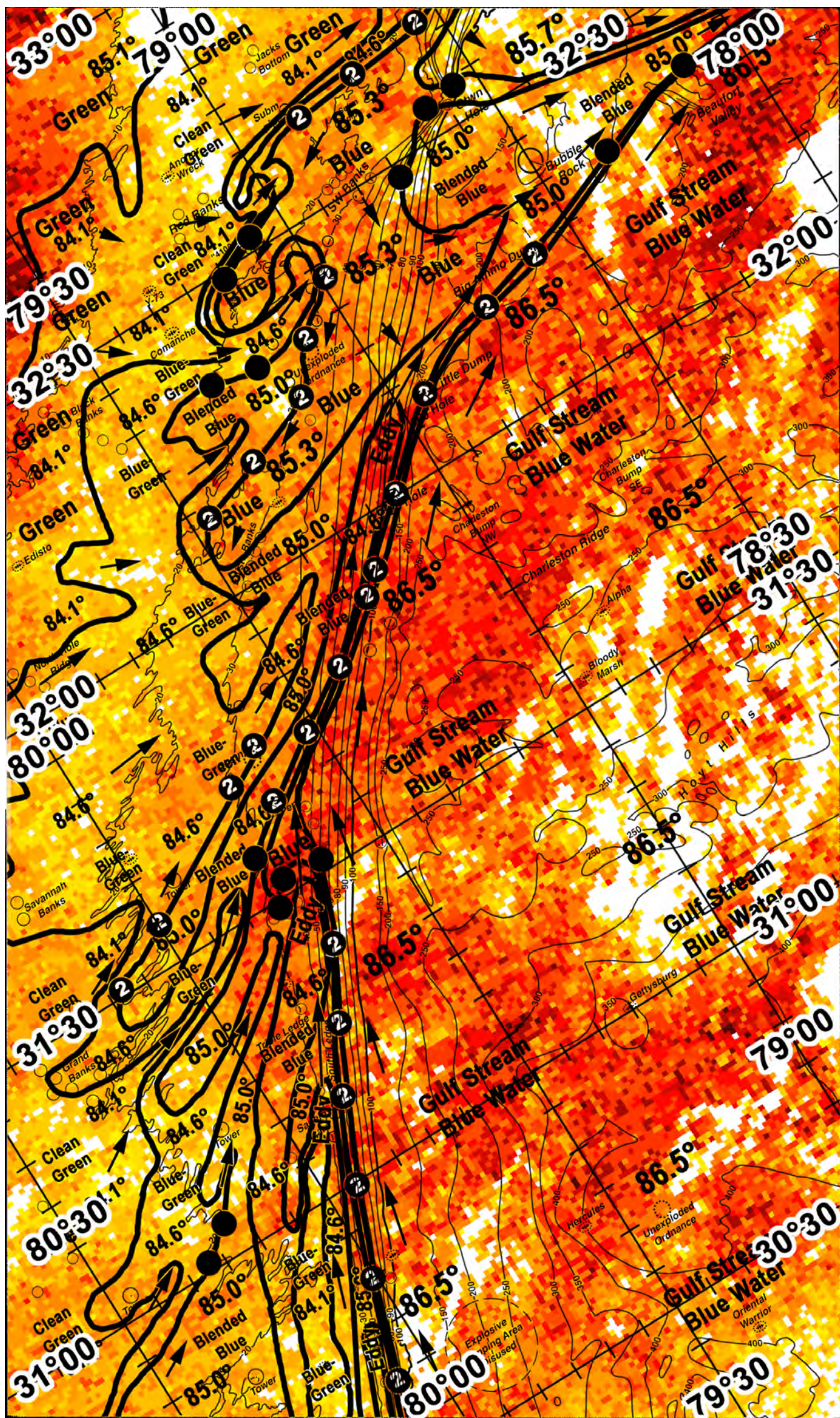
We were able to observe the ocean conditions in this area relatively clearly today and we were able to provide this update of the ocean conditions using a combination of high-resolution SST imagery along with ocean color/chlorophyll imagery from this afternoon. We have included an ocean color image derived from afternoon chlorophyll imagery in order for you to see the true surface water colors in this area. **We always believe that there is no substitution over real time satellite data. We continue to provide sea surface temperature (SST) and ocean color/chlorophyll modeled data from our new partners at Fathom Science. While its not perfect, this data is cutting-edge, high resolution, cloud-free modeled data that has been evaluated and validated by ROFFS™ and other oceanographic scientists and proven to be the most accurate cloud-free data available anywhere to guide you in the right direction, when completely cloudy, to increase your chances for fishing action over other areas. Please visit the FAQs to read more about the ROFFS™/Fathom Science™ partnership on our web site at <https://www.roffs.com/faqs/>. We have also included modeled forecast charts of both SST and Chlorophyll at the end of the analysis. They provide a modeled look as to what the ocean conditions you will find at 6am tomorrow morning.** Overall the estimated morning SST of the main body of the Gulf Stream is approximately 86.5°F and this feature continues to appear relatively stable towards the area South Ledge, east of the Deli area and angling offshore northeastward as you progress northward towards the area offshore of Charleston northwestward towards the 226 Hole and 380 Hole, towards the southern side of the Big Ammo Dump and towards the Beaufort Valley area. Inshore northwest of the main Gulf Stream edge we continue to observe a pool of cleaner blue water extending from the ledges in the area of the Georgetown Hole, over the SW Banks, and south/southwestward towards the area east of the Unexploded and towards the Edisto Banks which appears to be moving south/southwestward and also being pulled offshore eastward towards the Big Ammo Dump and the Bubble Rock areas around the southern side of the circulation of a large counter-clockwise rotating eddy feature that is located northeast of this area. Today we have shown areas that are likely to provide increased overall chances for a combination of tuna, wahoo, dolphin and billfish compared to other non-indicated areas particularly where we observed favorable ocean conditions for two days now. Keep a keen eye out on your way offshore for birds, rips, slicks, and floating debris as they are often key indicators as bait concentrations and many times increase your chances for finding bigger pelagic fish.

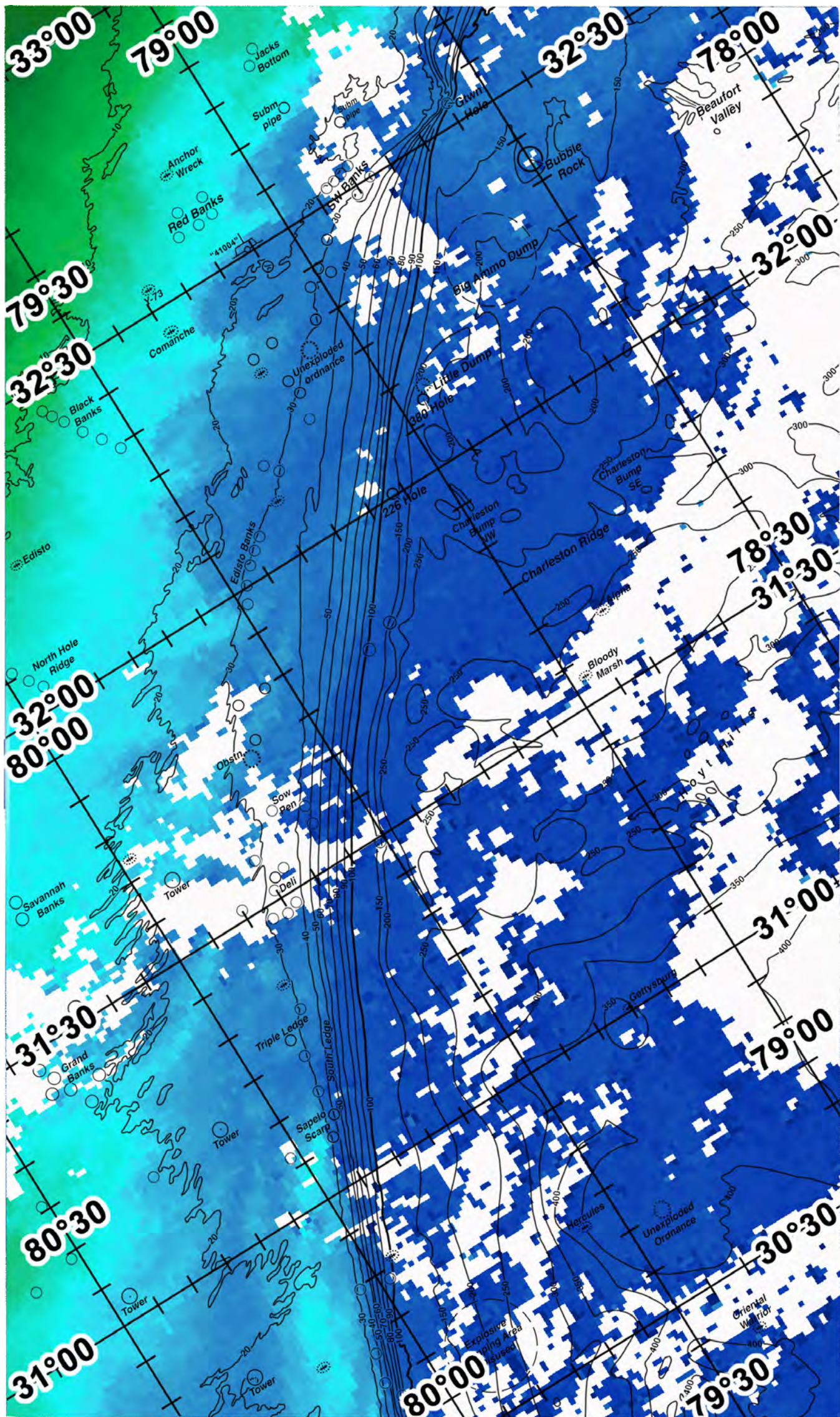
With this in mind, towards the area offshore of Savannah relatively good overall chances for fishing action occur where we observed the west/northwestern edge of the dark blue Gulf Stream water inshore of the 100 fathom ledge and towards the South Ledge area from 80°04-05'W & 30°39-40'N (2) to 80°00'W & 30°49-50'N (2) to 79°56'W & 31°00'N (2) to 79°51-52'W & 31°09'N (2) to 79°48-49'W & 31°15-16'N (2) to 79°44'W & 31°22'N (2). Towards the Deli area some increased chances for action are likely to happen as well where we believe you will find the inshore warmer to cooler water mass boundary of a passing eddy by fishing time tomorrow towards 79°46'W & 31°29'N and 79°43-44'W & 31°31-32'N. Inshore northwestward, the northwestern edge of the relatively cleaner blended blue water is also likely to provide action particularly where we observed favorable conditions for two days now over the 20 fathom ledges from 80°09'W & 31°31'N (2) to 80°00'W & 31°35-36'N (2) and northeastward offshore towards the 30 fathom ledges and good bottom towards 79°42'W & 31°42'N (2) and 79°37'W & 31°44'N (2). Offshore east/northeastward the northwestern edge of the dark blue Gulf Stream water appears to have remained favorable for two days now suggesting good action is likely to happen over the ledges and towards the 100 fathom curve from 79°39'W & 31°39-40'N (2) to 79°31'W & 31°44'N (2) to 79°23-24'W & 31°47-48'N (2) to 79°15'W & 31°52-54'N (2).

Continuing northeastward towards the 226 Hole, the 380 Hole, towards the southern side of the Big Ammo Dump the northwestern edges of the cleaner blue Gulf Stream water are likely to provide good offshore chances for action particularly where we observed these conditions for two days now from 79°07'W & 32°00'N (2) to 78°56-57'W & 32°08'N (2) to 78°45'W & 32°11-12'N (2) to 78°36'W & 32°14'N (2). Inshore over the ledges north of the Edisto Banks and northeastward towards the Unexploded Ordnance the northwestern edges of the inshore pool of cleaner blue water are also likely to provide relatively good action again particularly where we observed favorable conditions for two days now from 79°28-29'W & 32°08-09'N (2) to 79°19-20'W & 32°11-12'N (2) to 79°11'W & 32°14-15'N (2) to 79°06'W & 32°19'N (2) to 79°00'W & 32°23-24'N (2). Northward, north of the Georgetown Hole area the northwestern edge of the same cleaner blue water also appears to have remained favorable for two days suggesting additional chances for action occur from 78°51'W & 32°40'N (2) to 78°43-44'W & 32°41-42'N (2) to 78°33'W & 32°43-44'N (2). If fishing action is not satisfactory in these areas you may also want to try towards the Georgetown Hole area and over the ledges southwestward where we observed favorable blue water conditions for the first time today towards 78°33-34'W & 32°34'N, 78°38'W & 32°33'N and 78°45'W & 32°29'N.

PLEASE NOTE: ROFFS™ will be CLOSED Monday September 7, 2020 in observance of Labor Day!

ROFFS™ Hours: Mon – Fri. 9:00 am – 7:00 pm EDT (sometimes later based on demand) with analysis order deadline before 3pm. We are now open on Saturdays 9AM to 4PM (sometimes we close earlier based on demand) analysis order deadline is 9:00am on Saturday. *Thank you for not sharing this analysis with non-paying anglers.* Remember you can order and/or purchase your fishing analyses from our website (<http://www.roffs.com/>) or by email (fishing@roffs.com). Verbal updates are free while on the water between 10:30 AM and 11:59 AM (eastern time).

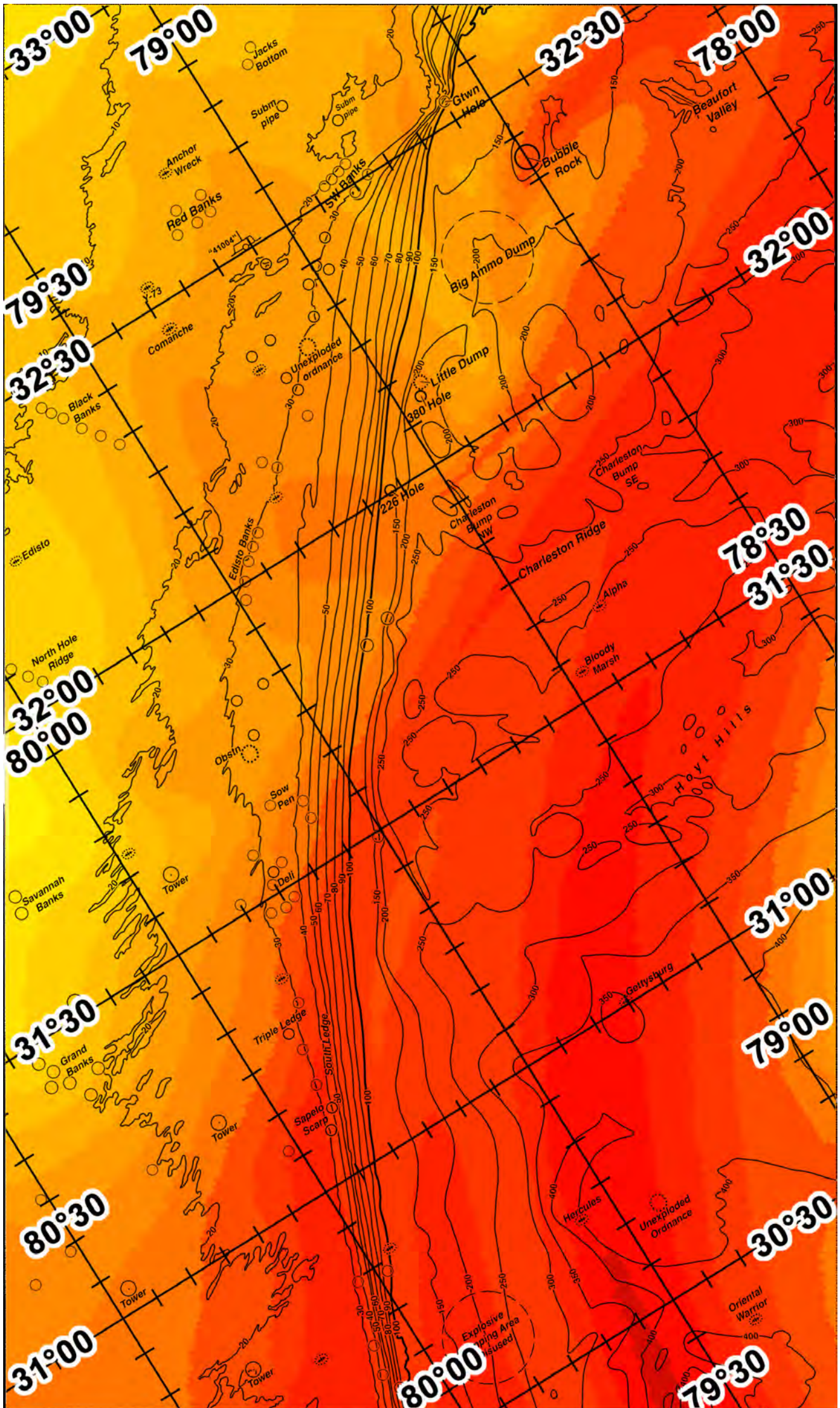






FATHOM SCIENCE

SST FORECAST for TOMORROW MORNING FISHING





OCEAN COLOR/CHLOROPHYLL FORECAST for TOMORROW MORNING

