

**FISHERIES OCEANOGRAPHIC ANALYSIS****FOR THE FORT PIERCE TO MATANZAS ANALYSIS AREA (LAT./LONG.)****UPDATED ON FRIDAY 04 SEPTEMBER 2020 FOR FRIDAY P.M. AND SATURDAY FISHING ONLY**

Based on a multiple factor oceanographic analysis, the indicated areas (hot spot dots) on the analysis mark the areas where bait concentrations are expected and where fishing action is expected to be better compared with other areas. Numbers inside of the hot spot dots indicate the number of consecutive days that we have seen favorable oceanographic conditions in that location. These areas are not based on dock rumors or hearsay fishing reports, they are based on oceanographic knowledge and expertise. You should start fishing where you recognize other signs of good fishing conditions near these marked areas (ie. rips/slicks, weed lines, birds, etc). It is very important to use your sea surface temperature (SST) gauge to locate the boundaries of the water masses, which are outlined in black. PLEASE REMEMBER, rather than trying to find water masses based on the absolute temperature values shown on the map, search for the relative change in SST where the water mass boundaries occur. Arrows indicate the main current direction. 1 fathom = approximately 6 feet. Afternoon SST is likely to be 1.0°F or more WARMER than indicated by the morning SST calibration on this analysis. NUMBERS IN PERENTHESIS AFTER LOCATIONS ARE NUMBER OF DAYS THAT SPOT HAS BEEN FAVORABLE. **We now provide cloud-free SST and ocean color/chlorophyll data from our new partner Fathom Science™ for at 6am forecast for the next day. This data is cutting-edge, high resolution, cloud-free modeled data that has been evaluated and validated by ROFFS™ along with other oceanographic scientists and proven to be the most accurate cloud-free data available to guide you in the right direction to increase your chances for fishing action. The cloud-free data will not be as accurate as the real time satellite imagery, but it will guide you to the general area for the better features, especially when it is cloudy. For more information please visit <https://www.roffs.com/faqs/>.**

We were able to see the area clearly again today using infrared sst° and MODIS/VIIRS color/chlorophyll satellite imagery to increase your chances of wahoo, tuna, mahi, and billfish. Overall the Gulf Stream is 86.1°F and relatively stable along 150 fathoms to approximately Cape Canaveral, where it pushes offshore along 200 fathoms. Looking inshore, we continue to observed associated filaments of blue 85.3-85.8°F favorable water along 70 fathoms, with some rotation inshore along 40 fathoms east of Cape Canaveral near 80°05'W & 28°12'N. We do not believe this is not a formed eddy, however, we expect favorable water pushing inshore will be east of Cape Canaveral resulting in favorable conditions in the area. Looking south of the charted area, we've observed an eddy off of Stuart resulting in favorable blue water pushing inshore along 20-30 fathoms. You can see the leading edge of this eddy pushing favorable blue water inshore over 30 fathoms along Oculina Bank. By tomorrow, we predict the eddy will be centered off of Sebastian resulting in favorable blue water pushing inshore over 20-30 fathoms. Looking inshore, we continue to observe a thin filament of cooler 81.2°F blue green to blue green water extending south along 15-25 fathoms to approximately Cape Canaveral. Additionally, we've observed warmer blue green to clean green water pushing south over 10-15 fathoms off of Matanzas. South of Cape Canaveral, we've observed a remnant filament of warmer 83.9-84.6°F blended blue water inshore over 10-15 fathoms from Melbourne to Vero Beach indicating additional chances of tuna, kingfish, sailfish and possibly wahoo and dolphin. We have included an ocean color/chlorophyll composite image from this afternoon so you can get a sense of where the bluer and greener water is located (email only, white=clouds).

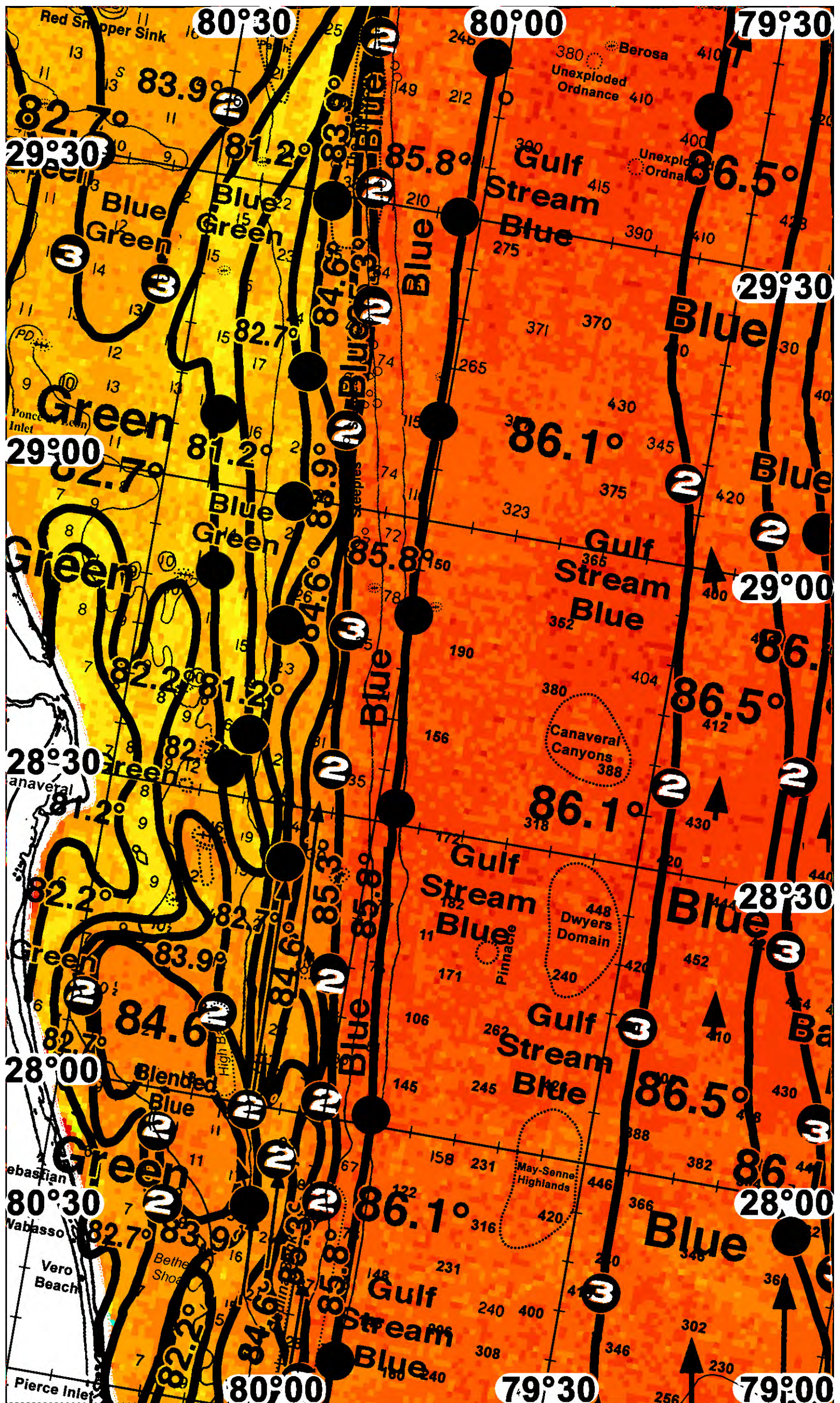
With this in mind, conditions suggest the best chances for tuna, dolphin, wahoo, and billfish out of Ponce Inlet will be found along the 82.7-85.3°F blue green to blue water mass boundaries we've observed along 30-80 fathoms for up to two days. We suggest starting along the cooler 82.7-83.9°F water mass boundaries we've observed over 25 fathoms near 80°14'W & 28°47'N, 80°15'W & 29°00'N, 80°16'W & 29°13'N, and the western side of the Rolldown near 80°15'W & 29°30'N. If this area isn't as productive as you'd like we suggest working offshore along the warmer cleaner blended blue to blue edges over 40-70 fathoms near where conditions have similarly been favorable for two to three days near 80°05'W & 28°35'N (2), 80°07'W & 28°47'N (3), 80°10'W & 29°7'N (2) over the Steeples, 80°10'W & 29°20'N (2) and 80°12'W & 29°12'N (2) over the southeastern end of the Rolldown. Looking inshore, you may additionally find tuna, kingfish, and sailfish action along the 83.9°F blue green filament we've observed over 10-15 fathoms for up to two days off of Matanzas. We suggest fishing the western side of this filament near 80°42'W & 29°20-30 (3) and the eastern side of this filament along 15 fathoms near 80°34'W & 29°20'N (3) to 80°30'W & 29°37'N (2).

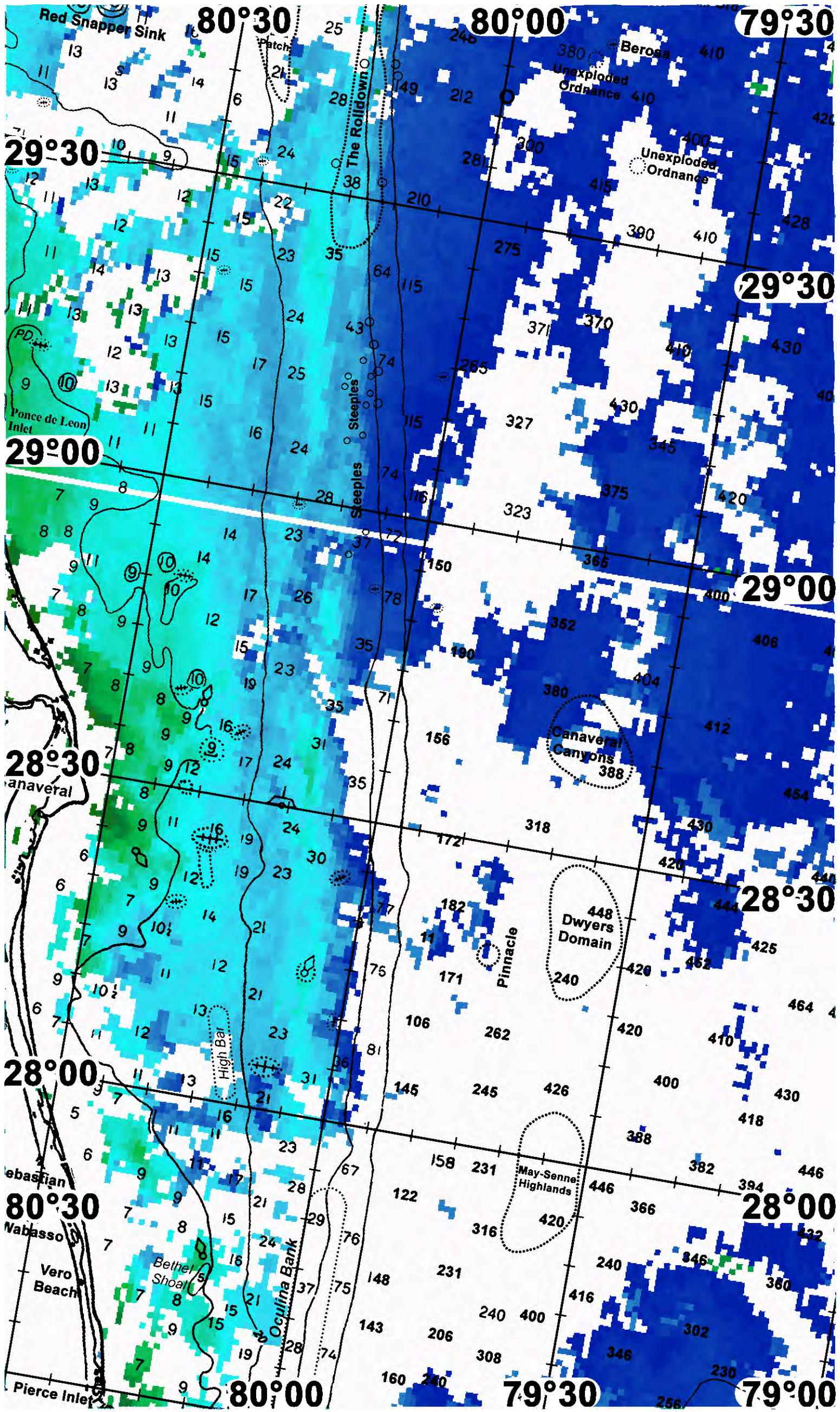
For those of you interested in fishing off of Cape Canaveral to Sebastian, conditions suggest your best chances of action will occur along the 84.6-85.8°F blended blue to blue eddy edges we predict will be inshore along 30-20 fathoms near 80°00'W & 28°00'N (2), 80°05'W & 27°55'N (2), and 80°07' W& 27°50'N. IF this edge isn't as productive as you'd like we suggest fishing the blue green to blue water mass boundaries north we've observed over 30-40 fathoms near 80°02'W & 28°15'N (2), 80°07'W & 28°25'N, and 80°05'W & 28°35'N (2). Looking inshore, we also like the blended blue 83.9-84.6°F filament edges we've observed over good bottom such as the High Bar near 80°16'W & 28°09'N (2), 80°10'W & 28°00'N (2). Keep in mind you may additionally find action along the inshore side of this water mass over 10-12 fathoms, however this edge is over relatively featureless bottom.

For those of you interested in fishing the eastern side of the Gulf Stream you will find this favorable edge extending northwest along 79°26'W & 27°47'N (3), 79°28'W & 28°15'N (3), 79°28'W & 28°38'N from Fort Pierce to Cape Canaveral. Looking along the eastern Gulf Stream edges north of Cape Canaveral, we've observed the eastern Gulf Stream along 79°32'W & 29°07'N to 79°35'W & 29°45'N.

ROFFS™ May Hours: Mon – Fri. 9:00 am – 7:00 pm EDT (sometimes later based on demand) with analysis order deadline before 3pm. We are now open on Saturdays 9AM to 4PM (sometimes we close earlier based on demand) analysis order deadline is 10:00am on Saturday. We will be closed Monday September 7th 2020 in observance of Labor Day. *Thank you for not sharing this analysis with non-paying anglers.* Remember you can order and/or purchase your fishing analyses from our website (<http://www.roffs.com/>) or by email (fishing@roffs.com). Verbal updates are free while on the water between 10:30 AM and 11:59 AM (eastern time).

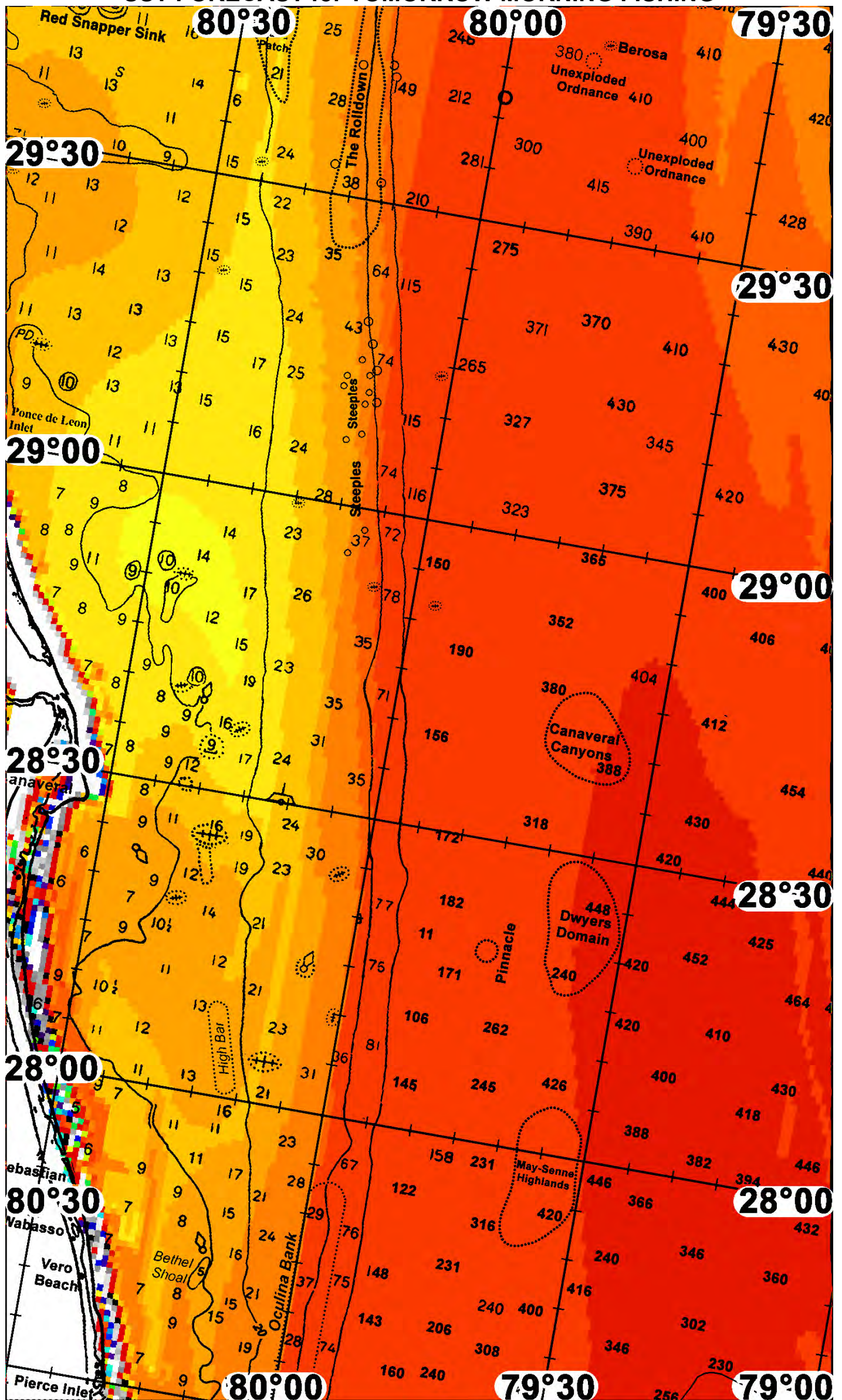
The ROFFS™ Graphic analysis is on the next page.







SST FORECAST for TOMORROW MORNING FISHING





OCEAN COLOR/CHLOROPHYLL for TOMORROW MORNING FISHING

