



WWW.ROFFS.COM



FISHING@ROFFS.COM



321.723.5759



@ROFFSFISHING

FISHERIES OCEANOGRAPHIC ANALYSIS

FOR THE CAPE CANAVERAL TO LAKE WORTH AREA (LAT./LONG.)

UPDATED ON FRIDAY 07 AUGUST 2020 FOR FRIDAY P.M. AND SATURDAY FISHING ONLY

Based on a multiple factor oceanographic analysis, the indicated areas (hot spot dots) on the analysis mark the areas where bait concentrations are expected and where fishing action is expected to be better compared with other areas. Numbers inside of the hot spot dots indicate the number of consecutive days that we have seen favorable oceanographic conditions in that location. These areas are not based on dock rumors or hearsay fishing reports, they are based on oceanographic knowledge and expertise. You should start fishing where you recognize other signs of good fishing conditions near these marked areas (ie. rips/slicks, weed lines, birds, etc). It is very important to use your sea surface temperature (SST) gauge to locate the boundaries of the water masses, which are outlined in black. PLEASE REMEMBER, rather than trying to find water masses based on the absolute temperature values shown on the map, search for the relative change in SST where the water mass boundaries occur. Arrows indicate the main current direction. 1 fathom = approximately 6 feet. Afternoon SST is likely to be 1.0°F or more WARMER than indicated by the morning SST calibration on this analysis. NUMBERS IN PERENTHESIS AFTER LOCATIONS ARE NUMBER OF DAYS THAT SPOT HAS BEEN FAVORABLE. **Fathom Science SST and Ocean Color/Chlorophyll** Forecasts now included on final two pages.

We were able to see the area relatively clearly again using afternoon infrared sst° and MODIS/VIIRS color/chlorophyll satellite imagery to increase your chances of wahoo, tuna, mahi, and billfish. Overall the Gulf Stream is 86.2-85.8°F and is relatively unstable due to a number of eddies in the area. Starting in the north, we've observed a relatively small eddy has been observed over 60 fathoms east of Sebastian near 80°00'W & 27°50'N, resulting in favorable 85.8°F blue water pushing inshore along 20 fathoms. By tomorrow, we expect this eddy will be off of Cape Canaveral. The next eddy has been observed over 150 fathom off of Vero Beach, resulting in a relatively long filament of 85.8°F blue water extending south over 50 fathoms to St. Lucie. By tomorrow, we expect this eddy will be off of Cape Canaveral, resulting in favorable blue water pushing inshore along 50 fathoms to Fort Pierce. The final eddies have been observed off of Palm Beach near 79°59'W & 26°48'N, off of Delray Beach near 79°55'W & 26°23'N, and off of Jupiter near 79°45'W & 27°00'N. Collectively, we've observed the large eddy off of Jupiter inlet push 85.8°F Gulf Stream blue water inshore over 50-80 fathoms from Jupiter to Hillsboro, with the smaller secondary eddies forming off of Palm Beach and Delray Beach. As a result, we've observed favorable 85.8°F Gulf Stream blue water pushing inshore along 40 fathoms due to the smaller eddies in these areas. Looking inshore in the northern charted area, the major feature in the area is the relatively cool filament of 82.4°F blue green water we've observed extending south along 15-20 fathoms to approximately the High Bar. Looking east of this we've observed generally blended blue water along 25-40 fathoms. We have included an ocean color/chlorophyll composite image from this afternoon so you can get a sense of where the bluer and greener water is located (email only, white=clouds). Please refer to this image given its clarity compared to the sst map.

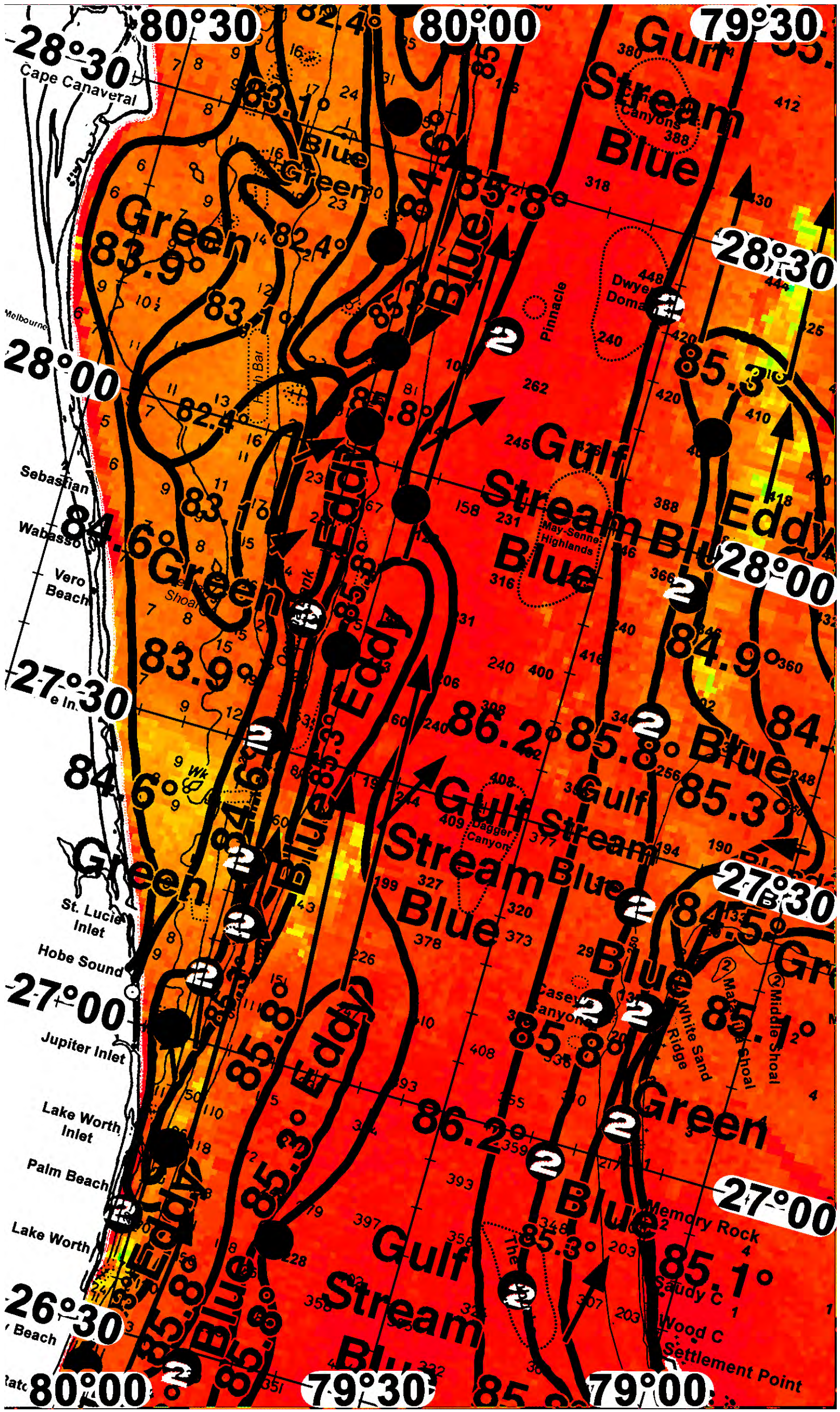
With this in mind, conditions suggest the best chances for tuna, dolphin, wahoo, and billfish out of Cape Canaveral to Melbourne area will be found along the favorable 85.8-85.3°F blended blue to blue eddy conditions 25 fathoms directly east of Cape Canaveral near 80°00'W & 28°42'N, 80°05'W & 28°35'N, and 80°02'W & 28°20'N. If this area isn't as productive as you'd like, you may additionally want to fish the western Gulf Stream edges we've observed over 250-300 fathoms near 79°52'W & 29°00-35'N for an additional chance of tuna, dolphin and marlin.

Looking further south along Sebastian to Fort Pierce, conditions suggest similarly favorable conditions along the 85.8°F blue eddy edges pushing inshore along 60 fathoms from Cape Canaveral to the northern end of Oculina Bank near 79°59'W & 28°10'N, 79°59'W & 28°04'N, 79°59'W & 27°45'N (2). If this area isn't as productive as you'd like, we suggest heading offshore and fishing the western Gulf Stream edges over 120-150 fathoms near 79°55'W & 27°45'N, 79°52'W & 27°57'N, and 79°47'W & 28°12'N.

For those of you heading out of the St. Lucie to Delray area, conditions suggest your best chances of action will be found along the eddy edges we predict will be pushing inshore along 100-20 fathoms near 80°00'W & 27°02'N (2) to 80°00'W & 27°00'N (2). Looking further south, the next eddy will similarly be pushing favorable blue water inshore along 20 fathoms off of Lake Worth Inlet to Lake Worth near 80°00'W & 26°50'N, to 80°01'W & 26°40'N (2).

For those of you interested in fishing the eastern side of the Gulf Stream, we suggest fishing the 85.5-84.9°F Gulf Stream blue to blue filament edges we predict will be along 79°20'W & 27°50'N (2) to 79°20'W & 28°12'N off of Fort Peirce to Melbourne and along The Suburbs near 79°20'W & 26°40'N to Caseys Canyons near 79°17'W 7 27°13'N (2).

ROFFS™ May Hours: Mon – Fri. 9:00 am – 7:00 pm EDT (sometimes later based on demand) with analysis order deadline before 3pm. We are now open on Saturdays 9AM to 4PM (sometimes we close earlier based on demand) analysis order deadline is 9:00am on Saturday. Thank you for not sharing this analysis with non-paying anglers. Remember you can order and/or purchase your fishing analyses from our website (<http://www.roffs.com/>) or by email (fishing@roffs.com). Verbal updates are free while on the water between 10:30 AM and 11:59 AM (eastern time).



80°30'

80°00'

79°30'

28°30'

Green
83.9°

Blue
84.6°

Blue
85.3°

Gulf Stream
Blue
85.8°

28°30'

28°00'

Green
84.6°

Eddy
85.3°

Gulf Stream
Blue
86.2°

Eddy
85.3°

27°30'

Green
83.9°

Eddy
85.3°

Gulf Stream
Blue
86.2°

Blue
85.3°

28°00'

Green
84.6°

Blue
85.3°

Gulf Stream
Blue
86.2°

Gulf Stream
Blue
85.8°

Blue
85.3°

27°30'

27°00'

Green
84.6°

Blue
85.3°

Gulf Stream
Blue
86.2°

Blue
85.8°

Blue
85.3°

27°30'

27°00'

Eddy
85.8°

Blue
85.3°

Gulf Stream
Blue
86.2°

Blue
85.8°

Green
85.1°

27°00'

26°30'

Eddy
85.8°

Blue
85.3°

Gulf Stream
Blue
86.2°

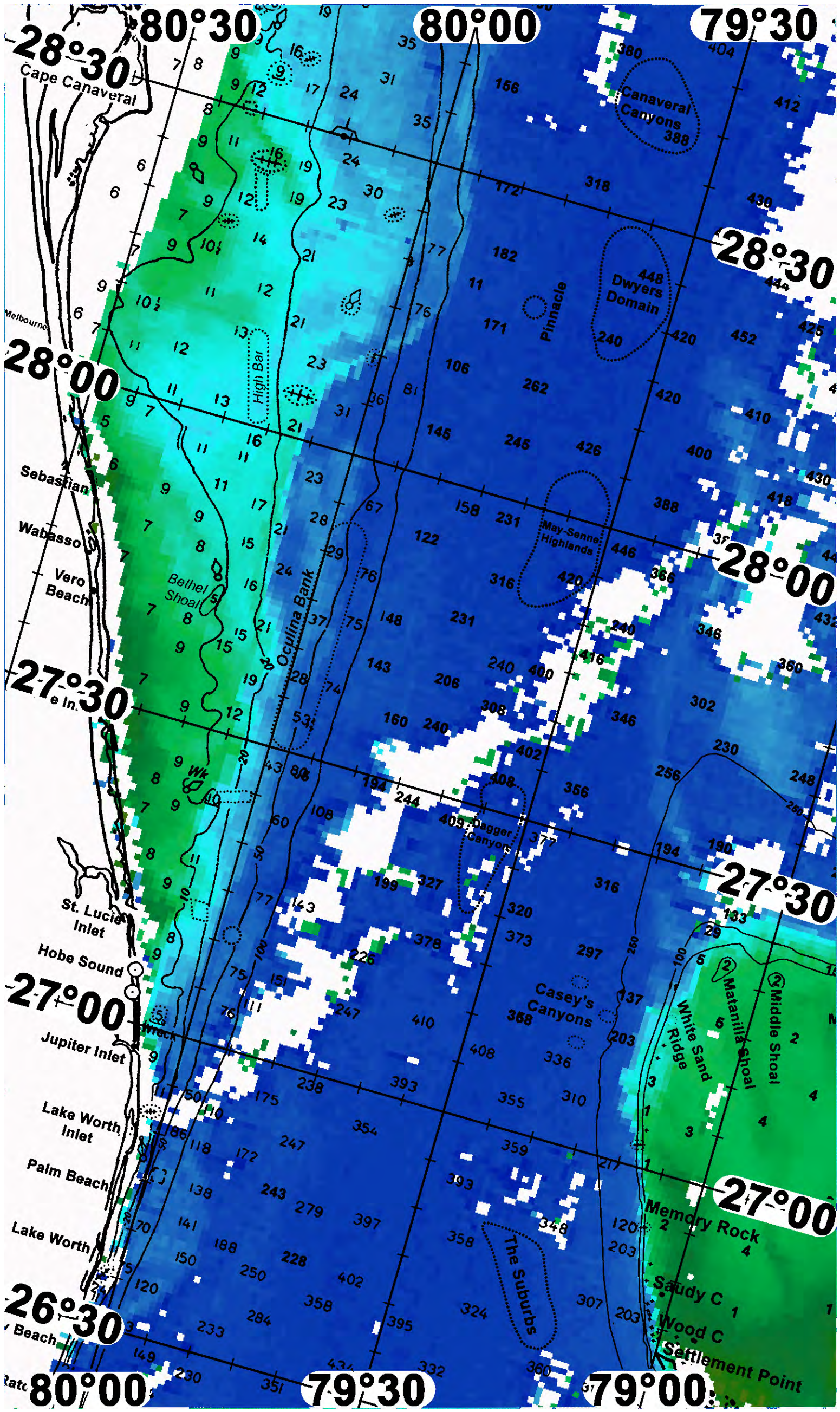
Blue
85.3°

Blue
85.1°

80°00'

79°30'

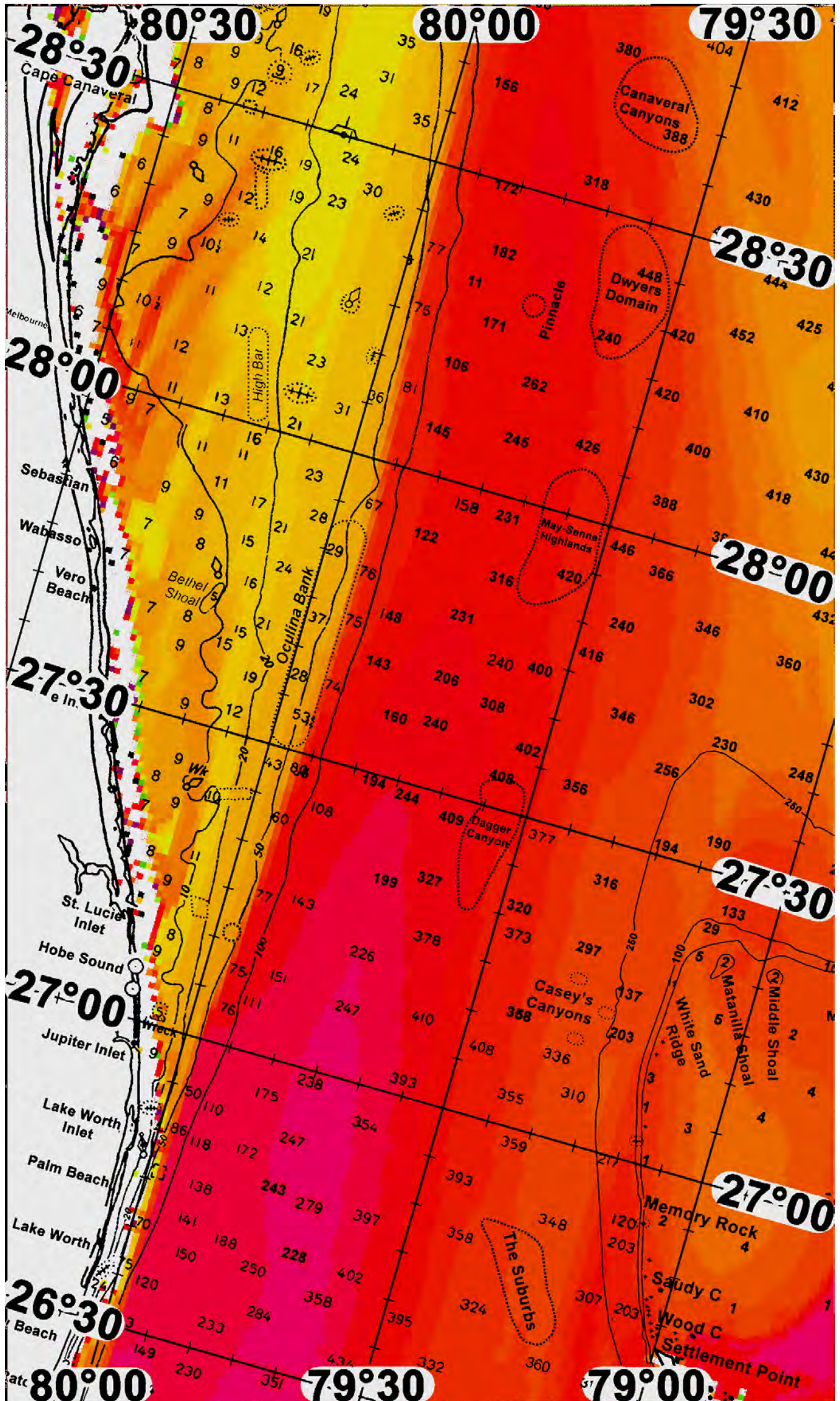
79°00'





FATHOM SCIENCE

SST FORECAST for TOMORROW MORNING FISHING





FATHOM SCIENCE

OCEAN COLOR/CHLOROPHYLL for TOMORROW MORNING FISHING

