

FISHERIES OCEANOGRAPHIC ANALYSIS

FOR THE FLORIDA EASTERN SIDE OF THE GULF STREAM AREA (LAT./LONG)

UPDATED ON FRIDAY 04 SEPTEMBER 2020 FOR FRIDAY P.M. AND SATURDAY FISHING ONLY

Based on a multiple factor oceanographic analysis, the indicated areas (hot spot dots) on the analysis mark the areas where bait concentrations are expected and where fishing action is expected to be better compared with other areas. Numbers inside of the hot spot dots indicate the number of consecutive days that we have seen favorable oceanographic conditions in that location. These areas are not based on dock rumors or hearsay fishing reports, they are based on oceanographic knowledge and expertise. You should start fishing where you recognize other signs of good fishing conditions near these marked areas (ie. rips/slicks, weed lines, birds, etc). It is very important to use your sea surface temperature (SST) gauge to locate the boundaries of the water masses, which are outlined in black. PLEASE REMEMBER, rather than trying to find water masses based on the absolute temperature values shown on the map, search for the relative change in SST where the water mass boundaries occur. Arrows indicate the main current direction. 1 fathom = approximately 6 feet. Afternoon SST is likely to be 1.0°F or more WARMER than indicated by the morning SST calibration on this analysis. NUMBERS IN PERENTHESIS AFTER LOCATIONS ARE NUMBER OF DAYS THAT SPOT HAS BEEN FAVORABLE. **We now provide cloud-free SST and ocean color/chlorophyll data from our new partner Fathom Science™ for at 6am forecast for the next day. This data is cutting-edge, high resolution, cloud-free modeled data that has been evaluated and validated by ROFFS™ along with other oceanographic scientists and proven to be the most accurate cloud-free data available to guide you in the right direction to increase your chances for fishing action. The cloud-free data will not be as accurate as the real time satellite imagery, but it will guide you to the general area for the better features, especially when it is cloudy. For more information please visit <https://www.roffs.com/faqs/>.**

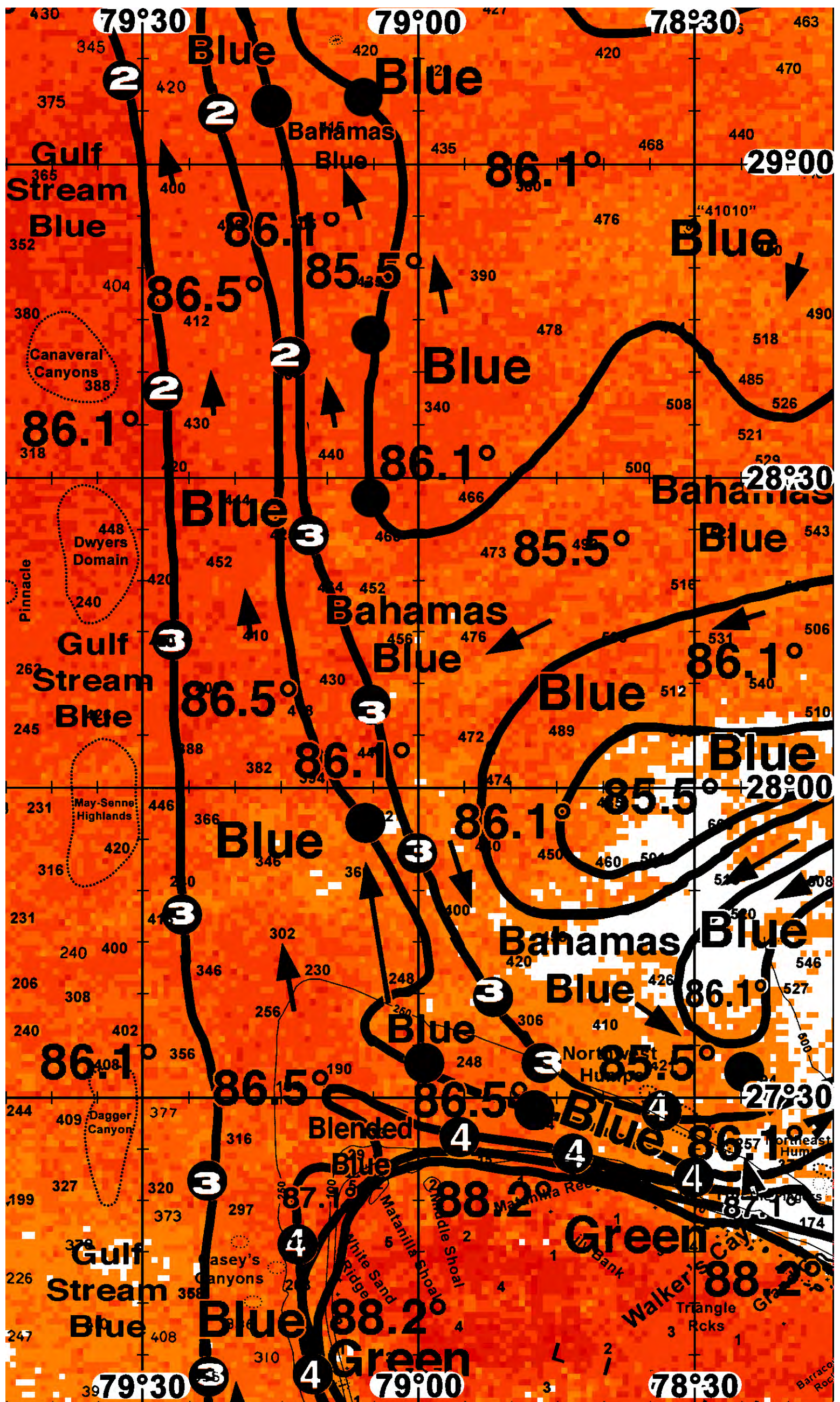
We were able to provide this analysis using a combination of infrared sst° and MODIS/VIIRS color/chlorophyll satellite imagery from the last 24 hours to increase your chances of wahoo, tuna, mahi, and billfish. Overall, the Gulf Stream is 86.1°F and has been observed extending northwest along 79°25-35'W through the charted area. East of the Gulf Stream, we've observed a relatively large offshore flow of warmer blue 86.5°F water similarly extending northwest from Memory Rock to the corner, where some of this water pushes southeast over 200 fathoms to Walkers Cay. Looking east of this warmer blue water, we've observed cooler 85.5°F Bahamas blue water flow west into the charted area to 79°00'W & 28°00'N, where it splits northwest along the warmer blue water previously discussed and southeast into 300 fathoms north of Matanilla Reef due to a counter clockwise rotating eddy northeast of Walkers Cay. Looking along the southeastern charted area off of Walkers Cay, you can see the warmer blue 86.1°F eddy filament rotating south. By tomorrow, we expect this eddy will continue pushing west, resulting in the eddy filament and associated offshore flow pushing west over the Northeast Humps. The final major feature is the filament of warmer blue water pushing south along 79°00'W in the northern charted area, effectively pinching the cooler Bahamas blue water in the area. This has created favorable water mass boundary conditions along the eastern and western side of this relatively thin Bahamas blue filament. We have included an ocean color/chlorophyll composite image from yesterday afternoon so you can get a sense of where the bluer and greener water is located (email only, white=clouds).

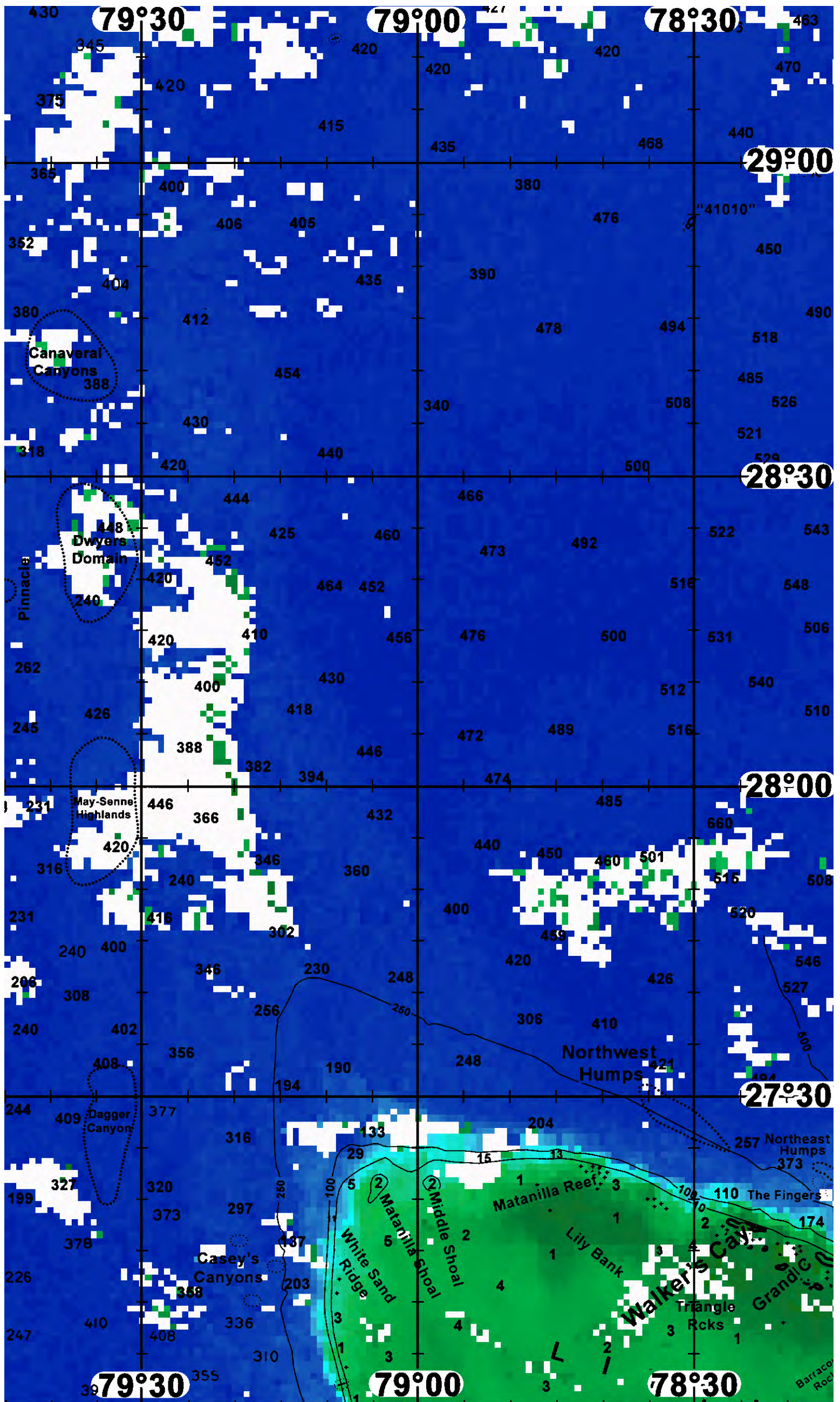
Overall, conditions suggest your best chances for tuna, mahi, and billfish for those of you out of south Florida will occur along the 86.5-85.5°F blue to Bahamas blue water mass boundaries we've observed extending northwest from the Northwest Humps. Starting along the southern end of this favorable edge, you will find this 86.1-85.5°F water mass boundary north of Walkers Cay along the Northwest Humps near 78°05'W & 27°30'N (4), and along 300-350 fathoms northwest near 78°45'W & 27°34'N (3), and 78°45'W & 27°41'N (3). Following this favorable water mass boundary northwest, conditions similarly suggest tuna, dolphin, and billfish action along 79°00'W & 27°55'N (3), 79°05'W & 28°07'N (3). Looking in the area off of Matanilla Reef to Walkers Cay, you may additionally find tuna, dolphin, wahoo, and billfish action along the blue green to blue 87.1-86.5°F water mass boundary conditions we've observed over 100-200 fathoms near 78°30'W & 27°25'N (4), 78°44'W & 27°26'N (4), and 78°55'W & 27°27'N (4). For those of you interested in fishing the eastern side of the Gulf Stream in the southern charted area, this favorable 86.1-86.5°F edge has been observed for three days extending north along 79°23'W & 27°04'N (3), 79°23'W & 27°23'N (3), and 79°26'W & 27°43'N (3) from Memory Rock to west of the Corner.

For those of you interested in fishing further north, conditions similarly suggest your best chance for tuna, dolphin and billfish will be found along the 86.1-85.5 °F blue to Bahamas blue water mass boundary conditions we've observed east of the Gulf Stream. We've observed this favorable edge for two to three days near 79°12'W & 28°25'N (3), 79°14'W & 28°40'N (2) and 79°15' W& 29°04'N. From there you may additionally want to fish head further east and fish the other side of the Bahamas blue filament along 79°04-05'W & 29°27-45'N. For those of you interested in fishing the eastern Gulf Stream edge out of the north, we've observed this edge along 79°26'W & 28°15'N (3), 79°27'W & 28°39'N (2), and 79°31'W & 28°08'N (2).

ROFFS™ May Hours: Mon – Fri. 9:00 am – 7:00 pm EDT (sometimes later based on demand) with analysis order deadline before 3pm. We are now open on Saturdays 9AM to 4PM (sometimes we close earlier based on demand) analysis order deadline is 10:00am on Saturday. We will be closed Monday September 7th 2020 in observance of Labor Day. Thank you for not sharing this analysis with non-paying anglers. Remember you can order and/or purchase your fishing analyses from our website (<http://www.roffs.com/>) or by email (fishing@roffs.com). Verbal updates are free while on the water between 10:30 AM and 11:59 AM (eastern time).

The ROFFS™ Graphic analysis is on the next page.

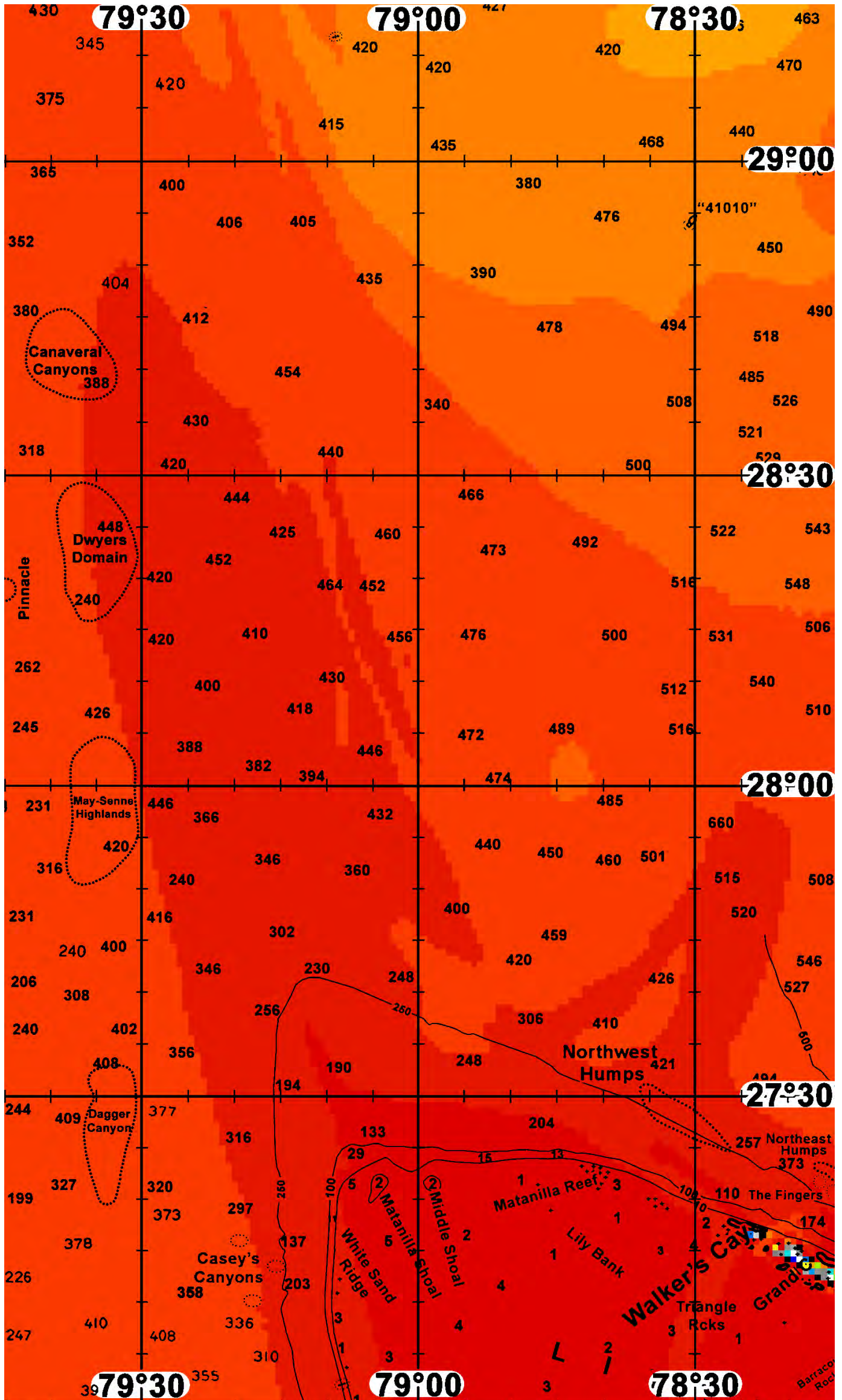






FATHOM SCIENCE

SST FORECAST for TOMORROW MORNING FISHING





FATHOM SCIENCE

OCEAN COLOR/CHLOROPHYLL for TOMORROW MORNING FISHING

