



WWW.ROFFS.COM



FISHING@ROFFS.COM



321.723.5759



@ROFFSFISHING

FISHERIES OCEANOGRAPHIC ANALYSIS

FOR THE JACKSONVILLE TO SMYRNA OFFSHORE AREA (LAT./LONG.)

UPDATED ON SATURDAY 05 SEPTEMBER 2020 FOR SATURDAY P.M. AND SUNDAY FISHING ONLY

Based on a multiple factor oceanographic analysis, the indicated areas (hot spot dots) on the analysis mark the areas where bait concentrations are expected and where fishing action is expected to be better compared with other (non-indicated) areas. Numbers inside of the hot spot dots indicate the number of consecutive days that we have seen favorable oceanographic conditions in that location. These areas are not based on dock rumors or hearsay fishing reports, they are based on oceanographic knowledge and expertise. You should start fishing where you recognize other signs of good fishing conditions near these marked areas (ie. rips/slicks, weed lines, birds, etc). It is very important to use your sea surface temperature (SST) gauge to locate the boundaries of the water masses, which are outlined in black. PLEASE REMEMBER, rather than trying to find water masses based on the absolute temperature values shown on the map, search for the relative change in SST where the water mass boundaries occur. Arrows indicate the main current direction. 1 fathom = approximately 6 feet. Afternoon SST is likely to be 1.0°F or more WARMER than indicated by the morning SST calibration on this analysis. NUMBERS IN PERENTHESIS AFTER LOCATIONS ARE NUMBER OF DAYS THAT SPOT HAS BEEN FAVORABLE.

ROFFS™ will be closed on Monday for Labor Day.

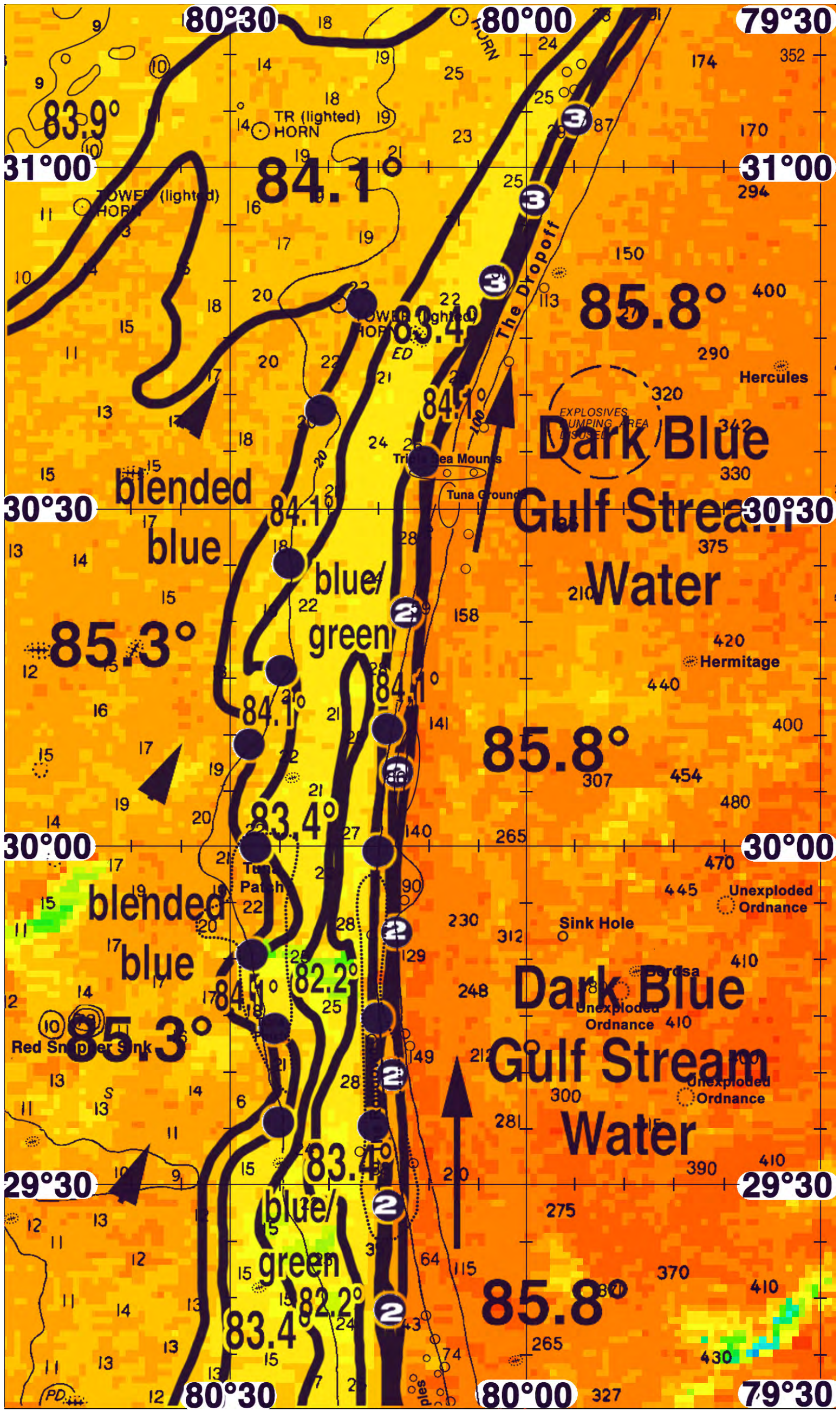
We are able to observe the ocean conditions in this area relatively clearly today using a combination of infrared and MODIS chlorophyll satellite imagery from this morning and early this afternoon. The morning estimated sst of the main body of the Gulf Stream is 85.8°F. Overall, the western edge of the Gulf Stream is located over the 50-100 fathom ledges throughout this analysis area providing good chances for fishing action with tuna, dolphin, wahoo and billfish, especially where conditions have remained favorable for multiple days. Closer inshore, a large band of blended blue 85.3°F water is being pulled slightly in an offshore direction, but over good bottom areas along the 20 fathom ledge east of St. Augustine providing additional increased chances for fishing action with a combination of tuna, dolphin, wahoo and sailfish. On your way offshore, keep a keen eye out for birds, bait and weed lines, as they are classic indicators for concentrations of fish. We now provide cloud-free SST and ocean color/chlorophyll data from our new partner Fathom Science™ for at 6am forecast for the next day. The cloud-free data will not be as accurate as the real satellite imagery, but it will guide you to the general area for the better features, especially when it is cloudy. For more information please visit <https://www.roffs.com/faqs/>.

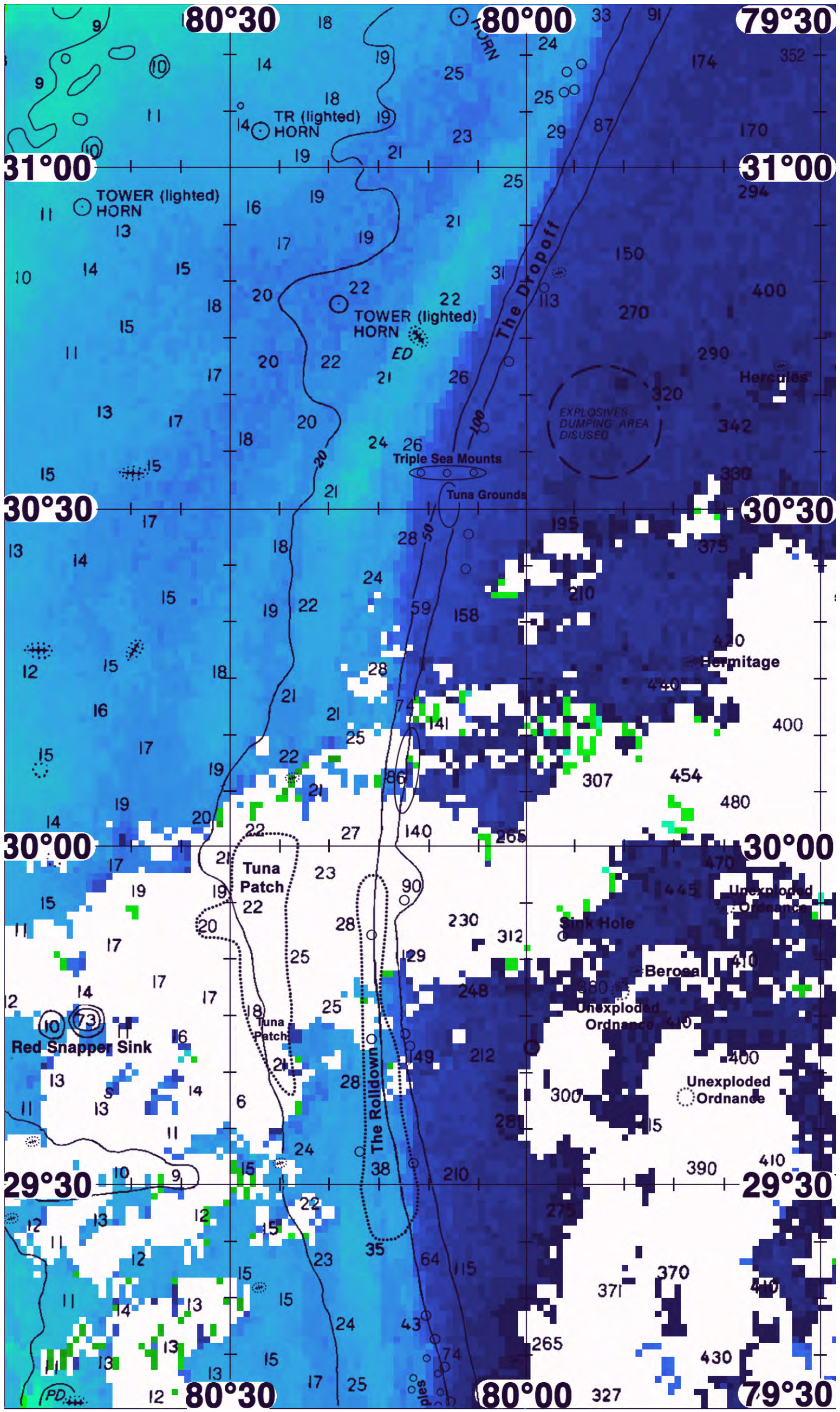
With this in mind, the ocean conditions offshore of St. Augustine suggest good chances for fishing action with tuna, dolphin, wahoo and billfish will occur along the western edge of the Gulf Stream where it lies over the 50-100 fathom ledges and where conditions have remained favorable for multiple days from near 80°14'W & 29°18'N (2), within the Rolldown area near 80°14'W & 29°28'N (2), 80°13'W & 29°40'N (2), 80°16'W & 29°44'N, and 80°14'W & 29°52'N (2), and where it continues north to near 80°14'W & 30°07'N (2), and 80°13'W & 30°22'N (2). On your way offshore, increased chances for fishing action with a combination of tuna, dolphin, wahoo and sailfish will occur along the blended blue to blue green 85.3°F-83.4°F water mass boundary zone where it lies over good bottom areas along 20 fathoms from near 80°25'W & 29°36'N, 80°26'W & 29°43'N, within the Tuna Patch near 80°28'W & 29°50'N and 80°27'W & 30°00'N, and near 80°28'W & 30°08'N and 80°24'W & 30°16'N.

Offshore of Jacksonville, good chances for fishing action with tuna, dolphin, wahoo and marlin will occur along the western edge of the main body of the Gulf Stream (85.8°F) where it lies just inshore of 50 fathoms and the Dropoff area from the Three Sea Mounts near 80°11'W & 30°34'N to 80°03'W & 30°50'N (3), 79°59'W & 30°56'N (3), and near 79°54'W & 31°04'N (3). Closer inshore, increased chances for action with sailfish is likely to occur along the offshore edges of the band of blended blue 85.3°F water where it lies over 20 fathoms near 80°24'W & 30°25'N, 80°21'W & 30°38'N and near 80°16'W & 30°48'N.

ROFFS™ May Hours: Mon – Fri. 9:00 am – 6:00 pm EDT (sometimes later based on demand) with analysis order deadline before 3pm. We are now open on Saturdays 9AM to 4PM (sometimes we close earlier based on demand) analysis order deadline is 9:00am on Saturday. Thank you for not sharing this analysis with non-paying anglers. Remember you can order and/or purchase your fishing analyses from our website (<http://www.roffs.com/>) or by email (fishing@roffs.com). Verbal updates are free while on the water between 10:30 AM and 11:59 AM (eastern time).

The ROFFS™ Graphic analysis is on the next page.

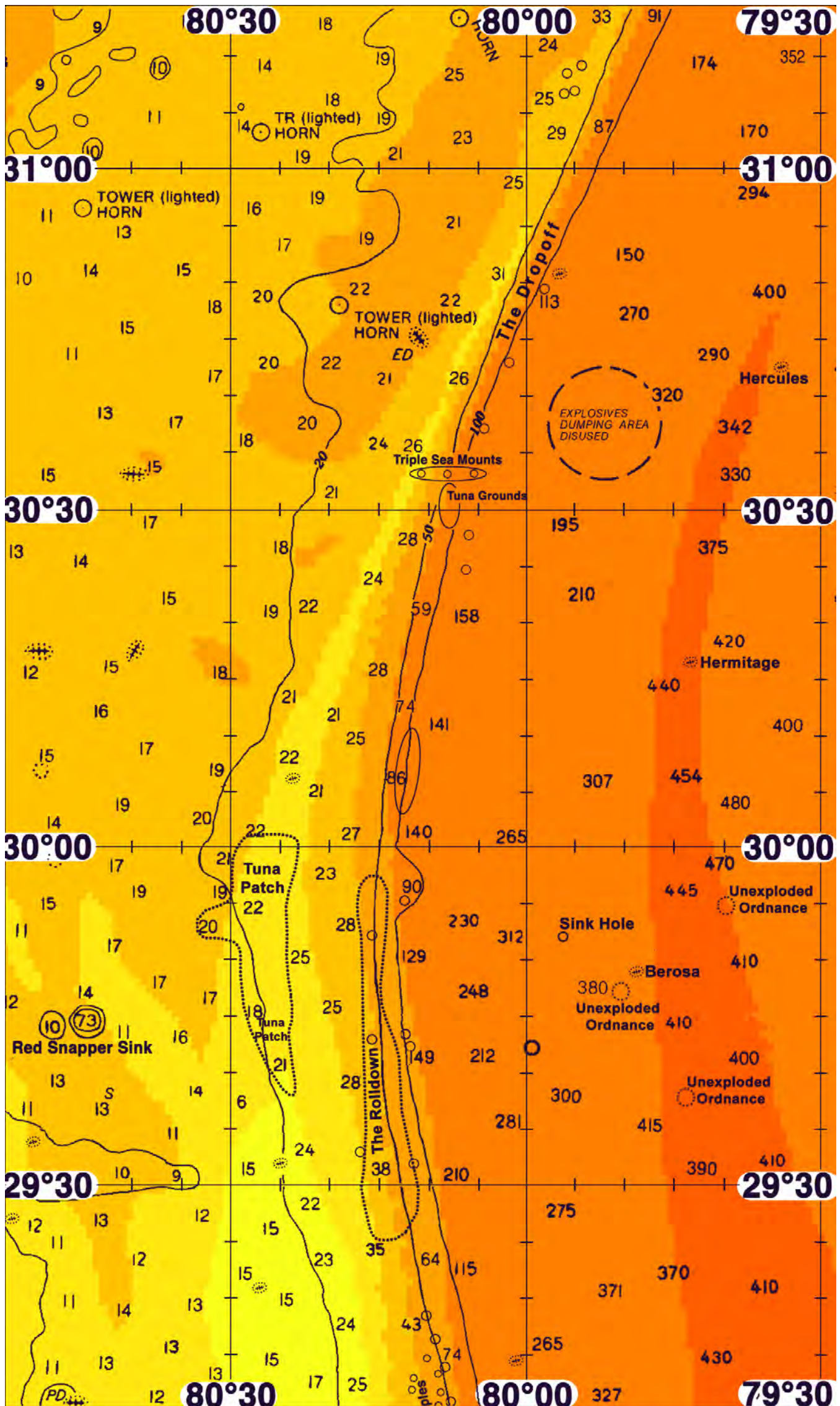






FATHOM SCIENCE

SST FORECAST for TOMORROW MORNING FISHING





FATHOM SCIENCE

OCEAN COLOR/CHLOROPHYLL FORECAST for TOMORROW MORNING

