



WWW.ROFFS.COM



FISHING@ROFFS.COM



321.723.5759



@ROFFSFISHING



**FISHERIES OCEANOGRAPHIC ANALYSIS FOR THE
FOR THE ST. CATHERINE'S TO ST. JOHN'S RIVER INSHORE ANALYSIS (LAT./LONG.)
UPDATED ON FRIDAY 14 AUGUST 2020 FOR FRIDAY P.M. & SATURDAY FISHING ONLY**

Based on a multiple factor analysis, the symbols (hot spot dots) mark the areas where bait concentrations are expected and where fishing action are expected to be better compared with other (non-marked) areas. These are not based on dock rumors or hearsay fishing reports. Fishing reports are stated as such. You should start fishing where you recognize other signs of good fishing conditions near these marked areas. It is very important to use your sea surface temperature (sst°) gauge to locate the boundaries of the water masses, which are outlined. Rather than trying to find water based on the absolute temperature values shown on the map, search for the relative change in sst where the water mass boundaries occur. Arrows indicate the main current direction. Numbers inside of the dots indicate the number of consecutive days that we have seen favorable conditions in that location. 1 fathom = approximately 6 feet. Afternoon SST is likely to be 1.0°F or greater than indicated by the morning calibration on this analysis. **NUMBERS IN PARENTHESIS AFTER LOCATIONS ARE NUMBER OF DAYS THAT SPOT HAS BEEN FAVORABLE.**

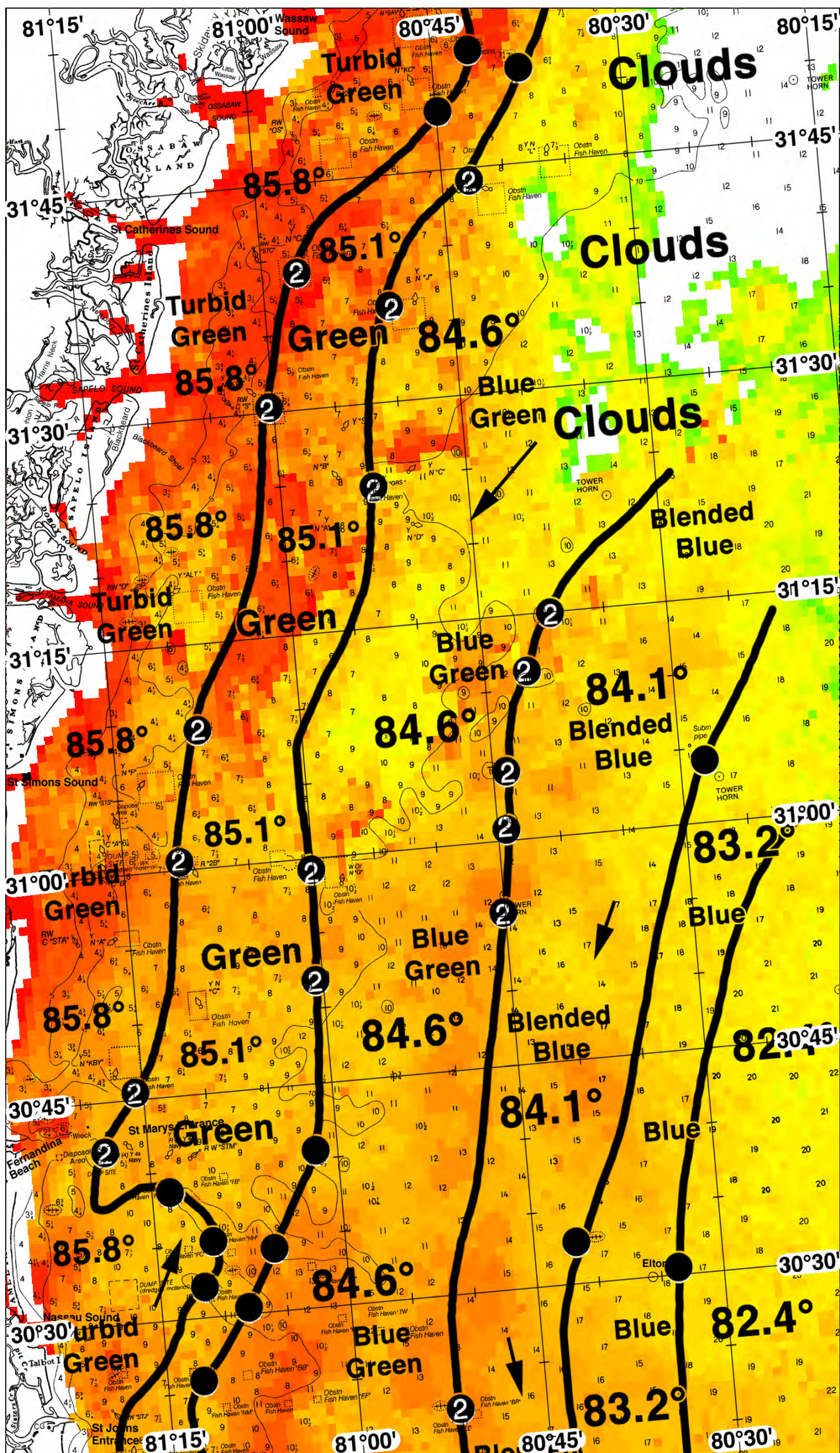
We now provide cloud-free SST and ocean color/chlorophyll data from our new partner Fathom Science™ for at 6am forecast for the next day. This data is cutting-edge, high resolution, cloud-free modeled data that has been evaluated and validated by ROFFS™ along with other oceanographic scientists and proven to be the most accurate cloud-free data available to guide you in the right direction to increase your chances for fishing action. The cloud-free data will not be as accurate as the real time satellite imagery, but it will guide you to the general area for the better features, especially when it is cloudy. For more information please visit <https://www.roffs.com/faqs/>

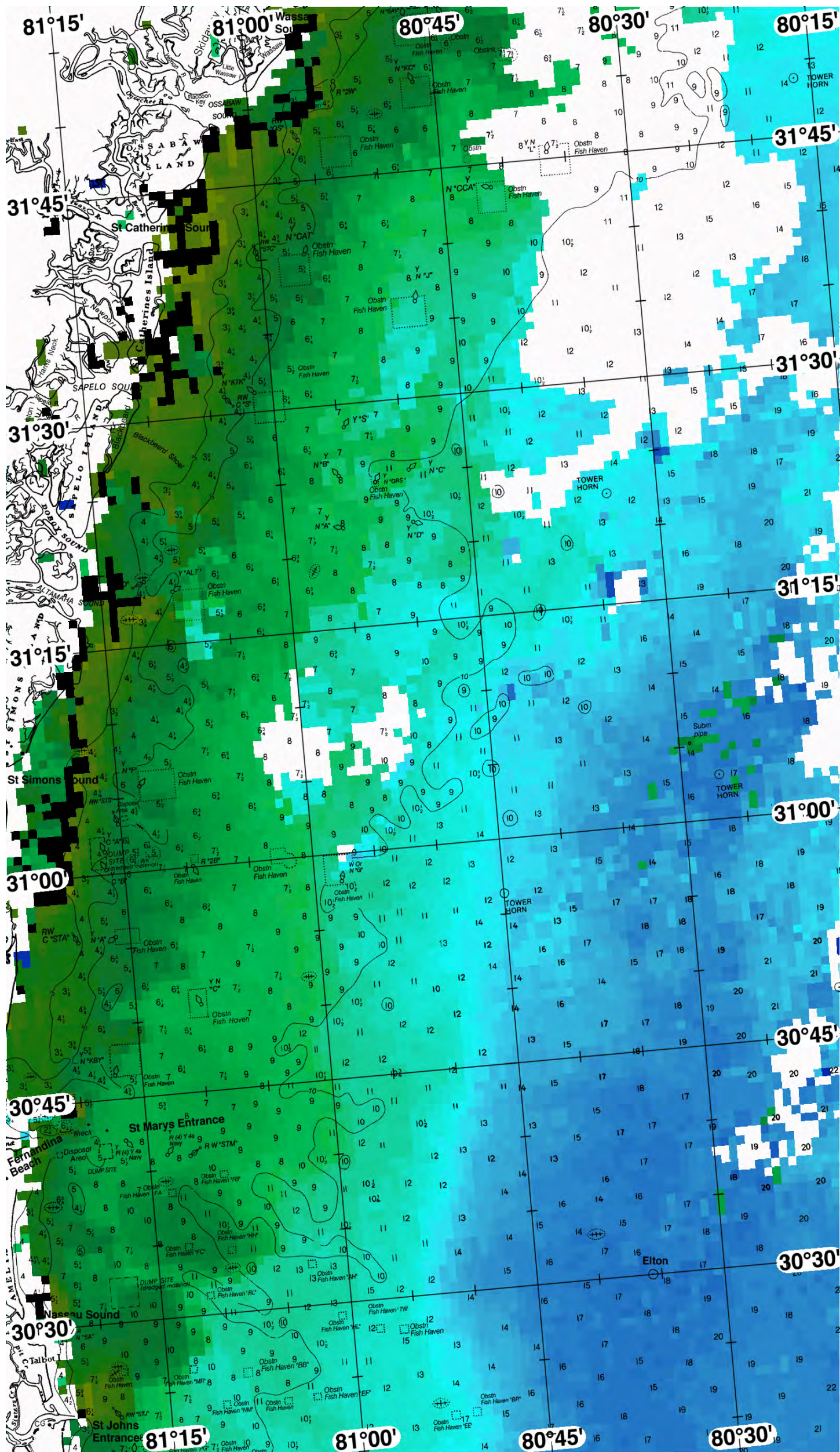
We were able to use today's infrared sst° and MODIS/VIIRS/Sentinel chl/ocean color satellite imagery for this analysis area and follow the oceanographic conditions for the past two days. Overall, we have observed relatively cool (83°F-84°F) bluer water off of Jacksonville Beach that has pushed inshore, towards 15 fathom depths. Inshore, we have observed turbid green water pushing offshore from the St. Johns River towards the 10 fathom good bottom off of Amelia Island. From the St. Mary's River north, this turbid green water has been observed over 4-6 fathom depths, approximately ten miles offshore. We have included an ocean color/chlorophyll composite image from this afternoon so you can get a sense of where the bluer and greener water is located (email only, white=clouds).

With this in mind, the better chances inshore kingfish fishing action out of the St. Johns River is likely to occur over the 10-12 fathom good bottom (from near 81°12'W & 30°25'N to 81°02'W & 30°40'N) off of the St. Mary's River entrance and north (from near 81°00'W & 30°52'N (2) and 81°00'W & 31°00'N (2) to 80°52'W & 31°25'N (2) to 80°43'W & 31°45'N (2)) where favorable (85.1°F-84.6°F) green to blue green water mass boundary conditions have been observed for one to two days as well. Turbid Green to cleaner green water mass boundary conditions have been observed over the 5-7 fathom depths and good bottom off of the St. Mary's River (near 81°18'W & 30°42'N (2) and 81°15'W & 30°45'N (2)), off of St. Simons Sound (near 81°11'W & 31°00'N (2) and 81°09'W & 31°10'N (2)), and St. Catherines Sound (near 81°00'W & 31°30'N (2) and 80°57'W & 31°38'N (2)) for the past two days as well. These conditions suggest additional increased chances for fishing action to occur.

If you were interested in heading further offshore, we have observed favorable (84.8/84.1°F blue green to blended blue/bluer water mass boundary conditions over the 10-12-14 fathom good bottom off of St. Simons Sound (from near 80°45'W & 30°55'N (2), 80°45'W & 31°00'N (2), 80°44'W & 31°05'N (2), 80°42'W & 31°12'N (2), and 80°40'W & 31°15'N (2)) for the past two days as well. These conditions suggest additional increased chances for kingfish as well as tuna, dolphin, and wahoo fishing action to occur.

ROFFS™ Summer Hours: Mon – Fri. 9:00 am – 7:00 pm EDT (sometimes later based on demand) with analysis order deadline before 3pm. We are now open on Saturdays 9AM to 4PM (sometimes we close earlier based on demand) analysis order deadline is 10:00am on Saturday. Thank you for not sharing this analysis with non-paying anglers. Remember you can order and/or purchase your fishing analyses from our website (<http://www.roffs.com/>) or by email (fishing@roffs.com). Verbal updates are free while on the water between 10:30 AM and 11:59 AM (eastern time).

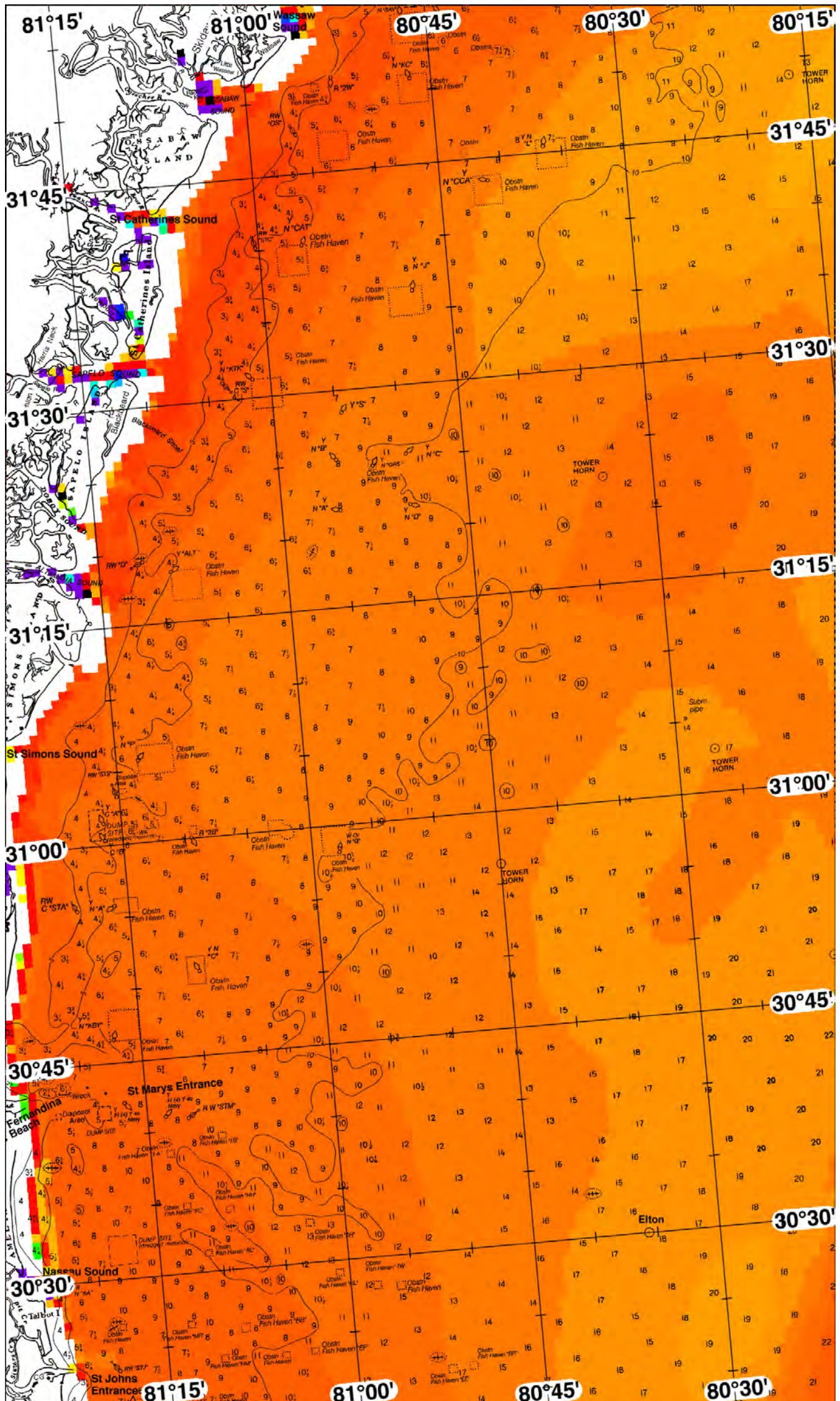






FATHOM SCIENCE

SST FORECAST for TOMORROW MORNING FISHING





FATHOM SCIENCE

OCEAN COLOR/CHLOROPHYLL FORECAST for TOMORROW MORNING

