



WWW.ROFFS.COM



FISHING@ROFFS.COM



321.723.5759



@ROFFSFISHING

FISHERIES OCEANOGRAPHIC ANALYSIS

FOR THE WALKER'S CAY OFFSHORE AREA (LAT./LONG)

UPDATED ON THURSDAY 03 SEPTEMBER 2020 FOR THURSDAY P.M. AND FRIDAY FISHING ONLY

Based on a multiple factor oceanographic analysis, the indicated areas (hot spot dots) on the analysis mark the areas where bait concentrations are expected and where fishing action is expected to be better compared with other (non-indicated) areas. Numbers inside of the hot spot dots indicate the number of consecutive days that we have seen favorable oceanographic conditions in that location. These areas are not based on dock rumors or hearsay fishing reports, they are based on oceanographic knowledge and expertise. You should start fishing where you recognize other signs of good fishing conditions near these marked areas (ie. rips/slicks, weed lines, birds, etc). It is very important to use your sea surface temperature (SST) gauge to locate the boundaries of the water masses, which are outlined in black. PLEASE REMEMBER, rather than trying to find water masses based on the absolute temperature values shown on the map, search for the relative change in SST where the water mass boundaries occur. Arrows indicate the main current direction. 1 fathom = approximately 6 feet. Afternoon SST is likely to be 1.0°F or more WARMER than indicated by the morning SST calibration on this analysis. NUMBERS IN PERENTHESIS AFTER LOCATIONS ARE NUMBER OF DAYS THAT SPOT HAS BEEN FAVORABLE.

ROFFS™ is closed on September 7, 2020 for Labor Day.

Although we are having issues with scattered cloud cover, we are able to provide this update using a combination of infrared and MODIS chlorophyll satellite imagery from early and late this afternoon. The morning estimated sst of the main body of the Gulf Stream is 86.5°F. Overall, a counter clockwise rotating eddy feature, centered near 78°20'W & 27°40'N, is pulling a finger of blue 86.0°F Gulf Stream water eastward along the 250 fathom ledge from the 250 Fathom Corner to over the Northwest and Northeast Humps and back offshore north of Strangers Cay, while also pulling cooler 85.3°F Bahama blue water southward towards the humps providing good chances for fishing action with tuna, dolphin, wahoo and billfish action over the next 12-24 hours. On your way offshore, keep a keen eye out for birds, bait and weed lines, as they are classic indicators for concentrations of fish. We now provide cloud-free SST and ocean color/chlorophyll data from our new partner Fathom Science™ for at 6am forecast for the next day. The cloud-free data will not be as accurate as the real satellite imagery, but it will guide you to the general area for the better features, especially when it is cloudy. For more information please visit <https://www.roffs.com/faqs/>.

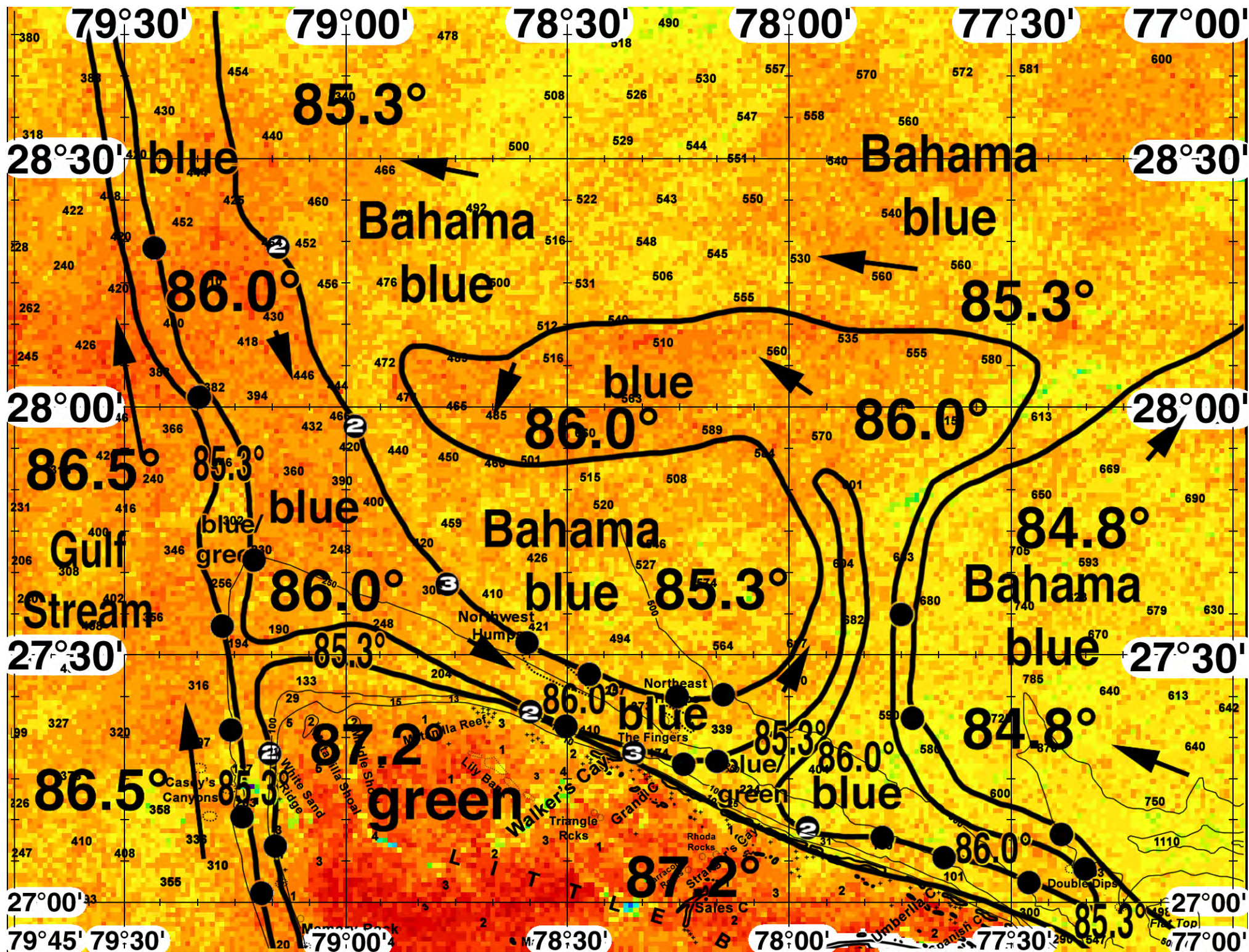
With this in mind, the ocean conditions out of Walker's Cay suggest good chances for fishing action with tuna, dolphin, wahoo and billfish will occur along the inshore edges of the finger of blue 86.0°F Gulf Stream water where it lies along the 100 fathom ledge from near 78°35'W & 27°23'N (2), 78°30'W & 27°21'N, 78°22'W & 27°18'N (3), 78°14'W & 27°17'N, 78°11'W & 27°16'N, and towards Umbrella Cay near 77°58'W & 27°08'N (2), 77°47'W & 27°07'N, and near 77°28'W & 27°03'N. If you find that the fishing action is not as productive as you would like, we suggest moving offshore and fishing the southern edges of the Bahama blue 85.3°F eddy water where it occurs from near 78°47'W & 27°38'N (3), 78°35'W & 27°32'N, 78°27'W & 27°27'N, 78°16'W & 27°24'N, and near 78°09'W & 27°24'N. Additional chances for action may also occur along the western edge of the cooler pool of 84.8°F Bahama blue water where it lies near 77°43'W & 27°20'N and 77°45'W & 27°36'N.

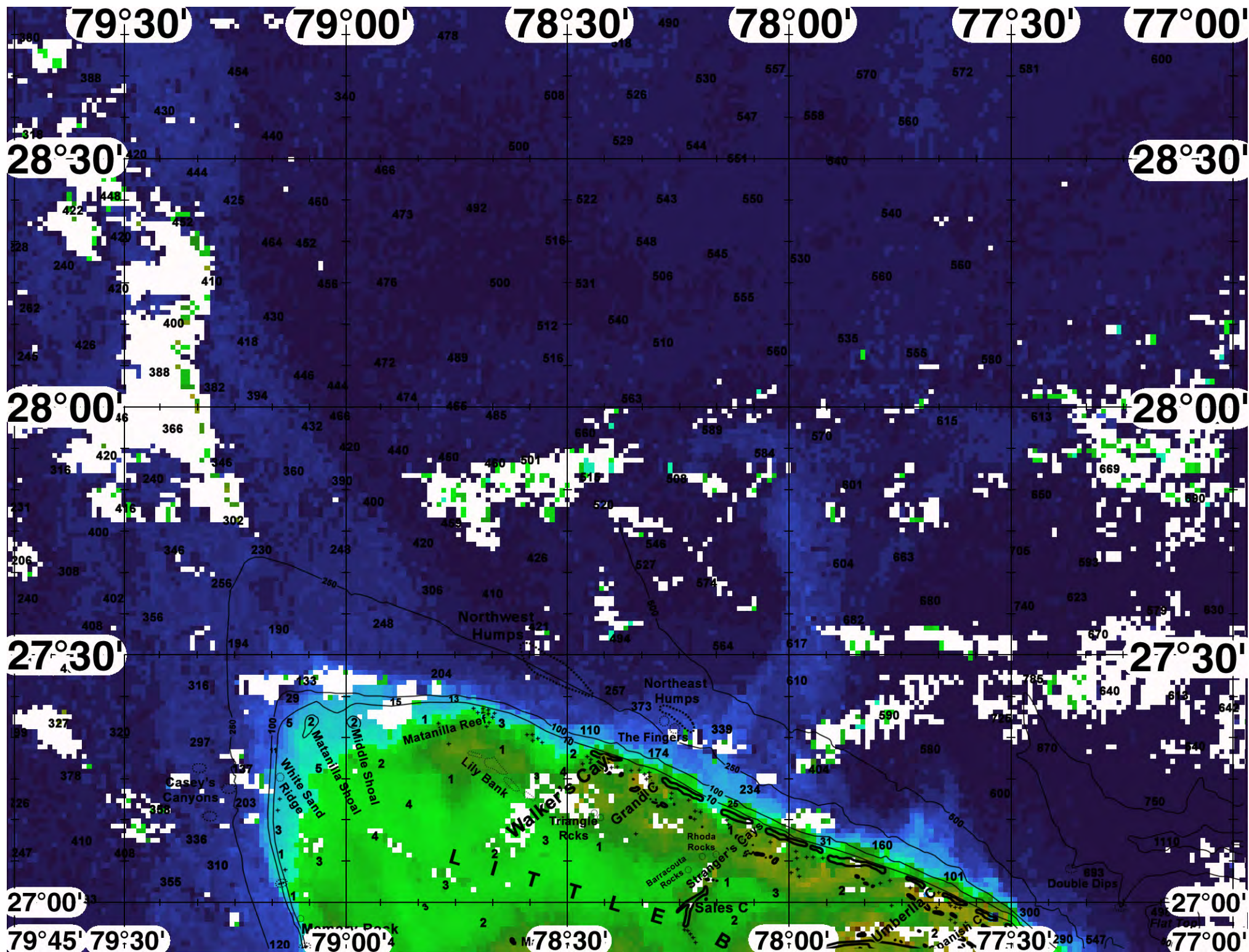
Continued on next page...

West of Little Bahama Bank, the eastern side of the Gulf Stream has pushed inshore over the 100-250 fathoms ledges providing increased chances for action with tuna and marlin from near 79°11'W & 27°01'N north to 79°13'W & 27°11'N, 79°17'W & 27°20'N, 79°16'W & 27°34'N and where it extends north off the 250 fathom corner to near 79°20'W & 28°01'N and 79°26'W & 28°19'N. Closer to White Sand Ridge, the green to blue 87.2°F-85.3°F water mass boundary zone has remained favorable for two days providing action near 79°08'W & 27°07'N and 79°11'W & 27°18'N (2). Additional good chances for action is also likely to occur along the eastern side of the Gulf Stream north of the Northwest Humps where the true eastern side of the Gulf Stream (86.0°F-85.3°F) has remained favorable for multiple days near 79°09'W & 28°19'N (2) and 78°58'W & 27°58'N (2).

ROFFS™ May Hours: Mon – Fri. 9:00 am – 7:00 pm EDT (sometimes later based on demand) with analysis order deadline before 3pm. We are now open on Saturdays 9AM to 4PM (sometimes we close earlier based on demand) analysis order deadline is 10:00am on Saturday. *Thank you for not sharing this analysis with non-paying anglers.* Remember you can order and/or purchase your fishing analyses from our website (<http://www.roffs.com/>) or by email (fishing@roffs.com). Verbal updates are free while on the water between 10:30 AM and 11:59 AM (eastern time).

The ROFFS™ Graphic analyses are on the next pages.

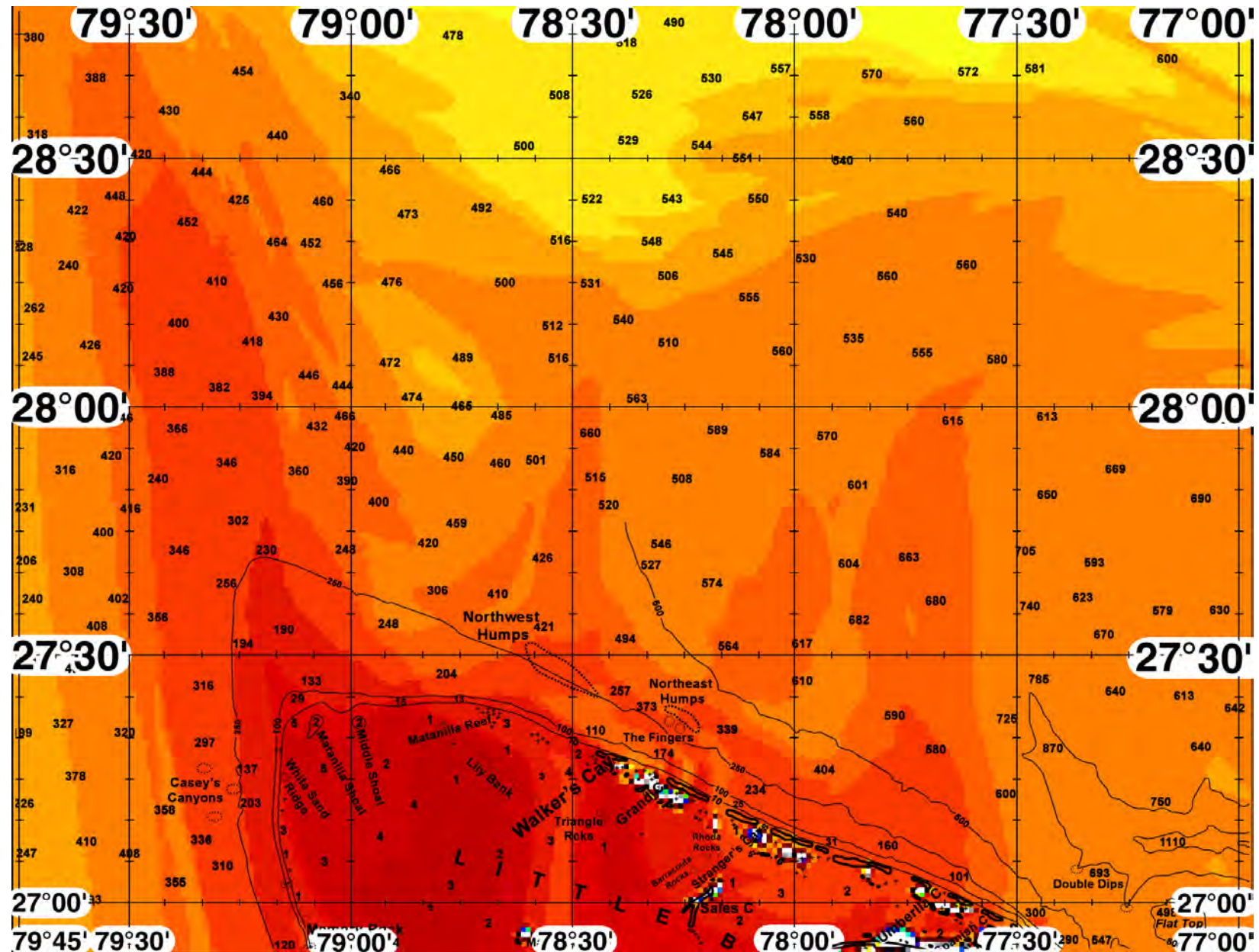






FATHOM SCIENCE

SST FORECAST for TOMORROW MORNING FISHING





FATHOM SCIENCE

OCEAN COLOR/CHLOROPHYLL FORECAST for TOMORROW MORNING

