

**FISHERIES OCEANOGRAPHIC ANALYSIS****FOR THE LUCAYA OFFSHORE ANALYSIS AREA (LAT./LONG.)****UPDATED ON TUESDAY 30 JUNE 2020 FOR TUESDAY P.M. AND WEDNESDAY FISHING ONLY**

Based on a multiple factor oceanographic analysis, the indicated areas (hot spot dots) on the analysis mark the areas where bait concentrations are expected and where fishing action is expected to be better compared with other (non-indicated) areas. Numbers inside of the hot spot dots indicate the number of consecutive days that we have seen favorable oceanographic conditions in that location. These areas are not based on dock rumors or hearsay fishing reports, they are based on oceanographic knowledge and expertise. You should start fishing where you recognize other signs of good fishing conditions near these marked areas (ie. rips/slicks, weed lines, birds, etc). It is very important to use your sea surface temperature (SST) gauge to locate the boundaries of the water masses, which are outlined in black. PLEASE REMEMBER, rather than trying to find water masses based on the absolute temperature values shown on the map, search for the relative change in SST where the water mass boundaries occur. Arrows indicate the main current direction. 1 fathom = approximately 6 feet. Afternoon SST is likely to be 1.0°F or more WARMER than indicated by the morning SST calibration on this analysis. NUMBERS IN PARENTHESES AFTER LOCATIONS ARE NUMBER OF DAYS THAT SPOT HAS BEEN FAVORABLE. **Fathom Science SST and Ocean Color/Chlorophyll Forecasts now included on final two pages.**

We continue to have difficulty seeing the charted area due to clouds and dust, however, we were able to provide this analysis using infrared sst° and MODIS/VIIRS color/chlorophyll satellite imagery from the last 24 hours to increase your chances of wahoo, tuna, mahi, and billfish. Overall, the Gulf Stream is 85.3°F and has been observed flowing into the Northwest Providence Channel along 250-300 fathoms to north of Percy's Grounds, where this water rotates north forming an eddy centered near 78°15'W & 26°15'N. As a result, we've additionally observed cooler blue water pulling south off of Freeport. Looking along the Berry Islands, we continue to observe generally warmer blended blue to blue water extending out to 250-300 fathoms flowing south and west along the Islands into the Pocket along 500 fathoms. Looking from the southern end of Abaco to Grand Bahamas Island, we continue to observe warmer blue water extending northeast into the channel along 100-150 fathoms to approximately the Finger. Looking north off of Walkers, we continue to observe an eddy north of the charted area, pulling Gulf Stream and blended blue offshore of Walkers Cay. Looking along Walkers to Little Abaco, we've observed generally cooler blue 83.9-84.1°F blue water flowing east/ northeast along 100 fathoms. We have included an ocean color/chlorophyll composite image from this afternoon so you can get a sense of where the bluer and greener water is located (email only, white=clouds).

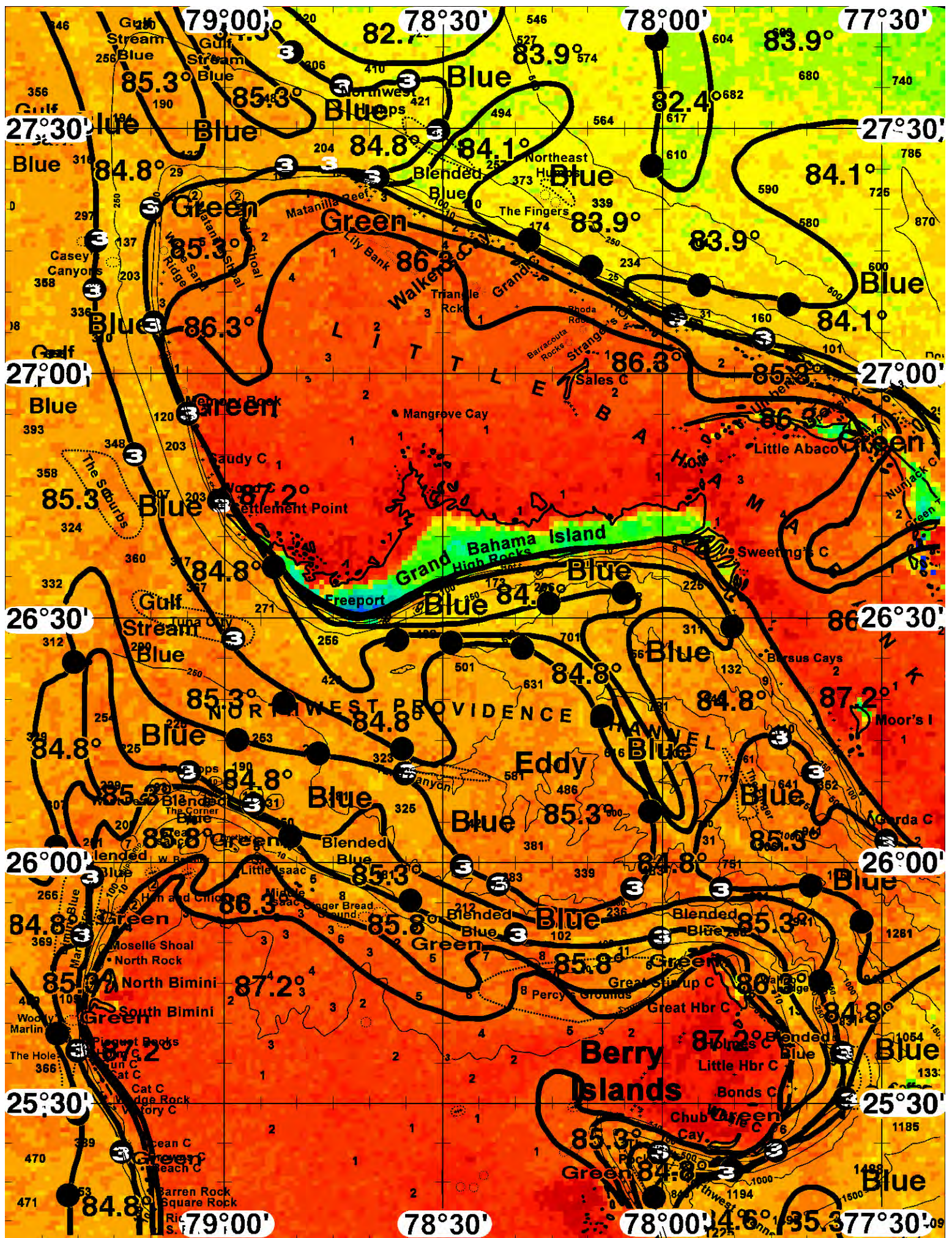
Overall, conditions suggest your best chances for yellowfin tuna, mahi, and marlin action will occur along the 84.8-85.3°F blended blue to blue filament edges we've observed along the Four Tops near 79°05'W & 26°12'N (3), 78°56'W & 26°12'N (3). From there we suggest fishing the 85.3°F blue western Gulf Stream edges we've observed over Tuna Canyon near 78°37'W & 26°11'N (3), and the eddy edges we've observed along 250 fathoms north of Percy's Grounds near 78°27'W & 26°00'N (3), 78°23'W & 25°57'N (3), and 78°34'W & 25°56'N (3). Looking off of Bimini, we also like the 84.8°F blue edges we've observed along Bimini Blue Marlin Grounds near 79°11'W & 25°45-59'N (3) and Woody's Marlin Hole near 79°17'W & 25°35 (3).

For those of you interested in fishing north along Freeport to Matanilla, we've observed a relatively large offshore flow of blended water due to the eddy in the channel, we therefore suggest staying offshore and fishing the 85.3-84.8°F Gulf Stream edge over Tuna City near 78°59'W & 26°28'N (3), then head inshore along 150 fathoms north of Settlement Point for an additional chance of action over good bottom along the green to blue edges we've observed near 79°00'W & 26°45'N (3) off of Settlement Point and 79°05'W & 26°55'N (3) off of Memory Rock.

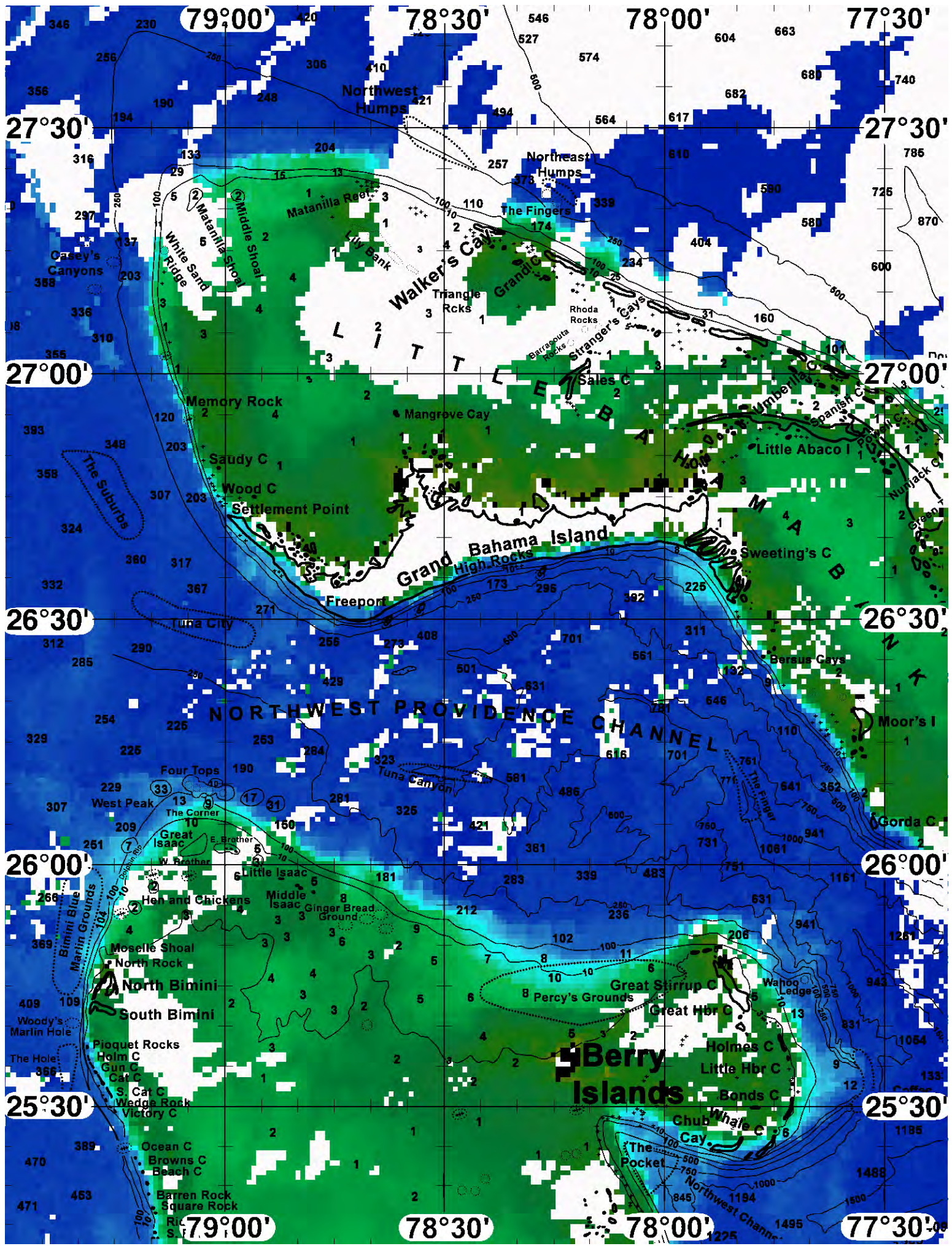
For those of you interested in fishing off of Walkers, we suggest starting along the 85.3-83.9°F Gulf Stream blue to blue edge that can be found north of Matanilla Reef near 78°50'W & 27°40'N (3), 78°45'W & 27°35'N (3), and 78°35'W & 27°145'N (3).

**ROFFS™ May Hours: Mon – Fri. 9:00 am – 7:00 pm EDT (sometimes later based on demand) with analysis order deadline before 3pm. We are now open on Saturdays 9AM to 4PM (sometimes we close earlier based on demand) analysis order deadline is 10:00am on Saturday. WE WILL BE CLOSED, MONDAY, JULY 6th for Independence Day Observation. Thank you for not sharing this analysis with non-paying anglers.** Remember you can order and/or purchase your fishing analyses from our website (<http://www.roffs.com/>) or by email ([fishing@roffs.com](mailto:fishing@roffs.com)). Verbal updates are free while on the water between 10:30 AM and 11:59 AM (eastern time). **WE WILL BE CLOSED, MONDAY, JULY 6th for Independence Day Observation.**







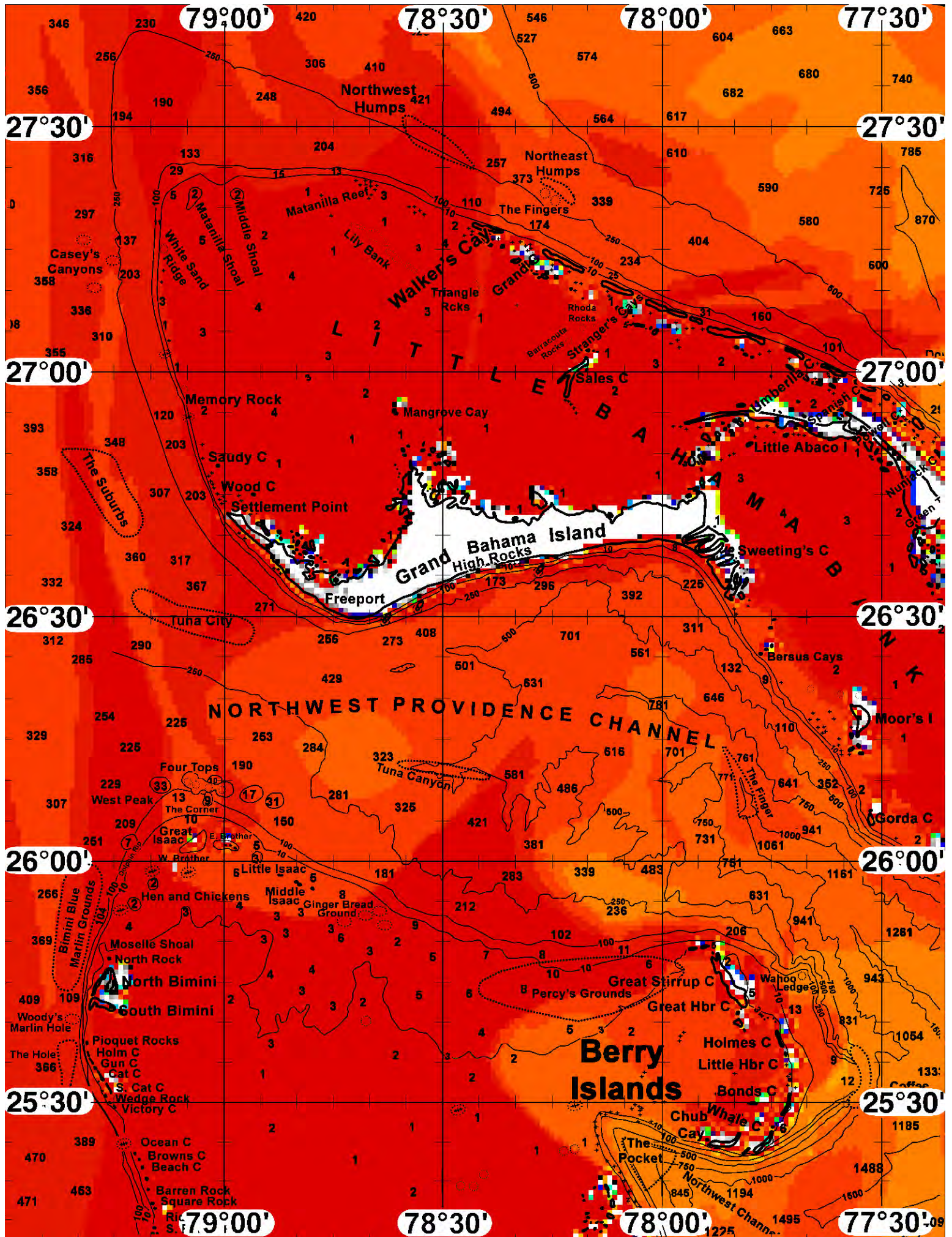






# FATHOM SCIENCE

SST FORECAST for TOMORROWMORNING FISHING







# FATHOM SCIENCE

OCEAN COLOR/CHLOROPHYLL for TOMORROW MORNING FISHING

