



WWW.ROFFS.COM



FISHING@ROFFS.COM



321.723.5759



@ROFFSFISHING



## **FISHERIES OCEANOGRAPHIC ANALYSIS**

### **FOR THE BERRY ISLANDS OFFSHORE AREA (LAT./LONG. ONLY)**

#### **UPDATED ON THURSDAY 02 JULY 2020 FOR THURSDAY P.M. AND FRIDAY FISHING ONLY**

Based on a multiple factor oceanographic analysis, the indicated areas (hot spot dots) on the analysis mark the areas where bait concentrations are expected and where fishing action is expected to be better compared with other (non-indicated) areas. Numbers inside of the hot spot dots indicate the number of consecutive days that we have seen favorable oceanographic conditions in that location. These areas are not based on dock rumors or hearsay fishing reports, they are based on oceanographic knowledge and expertise. You should start fishing where you recognize other signs of good fishing conditions near these marked areas (ie. rips/slicks, weed lines, birds, etc). It is very important to use your sea surface temperature (SST) gauge to locate the boundaries of the water masses, which are outlined in black. PLEASE REMEMBER, rather than trying to find water masses based on the absolute temperature values shown on the map, search for the relative change in SST where the water mass boundaries occur. Arrows indicate the main current direction. 1 fathom = approximately 6 feet. Afternoon SST is likely to be 1.0°F or more WARMER than indicated by the morning SST calibration on this analysis. NUMBERS IN PERENTHESIS AFTER LOCATIONS ARE NUMBER OF DAYS THAT SPOT HAS BEEN FAVORABLE.

**Special Note: ROFFS™ will be closed on Monday, July 6, 2020 for our observance of Independence Day.**

We are able to observe the ocean conditions in this area relatively clearly today using a combination of infrared and MODIS chlorophyll satellite imagery from last night, this morning and early this afternoon. Overall, we are able to observe an eddy within the Northwest Providence Channel near 78°14'W & 26°13'N, that is pulling a finger of Gulf Stream blue 85.1°F water eastward towards the northern Berry Island before turning back north towards Grand Bahama Island providing good chances for action with tuna, dolphin, wahoo and billfish near 78°10'W & 25°48'N (2), and 77°53'W & 25°50'N, and perhaps over the Finger near 77°48'W & 26°10'N. The counter clockwise rotation of the eddy has allowed a finger of blue 84.7°F water to trickle out of the channel and southward along the eastern coast of the Berry Islands providing good chances for action near 77°36'W & 25°36'N (5), and where it turns into the Northwest Channel from near 77°35'W & 26°28'N, 77°39'W & 26°28'N, and into the Northwest Channel just off Chub Cay where conditions have remained favorable for two days near 77°50'W & 25°20'N (2) and over the Pocket near 78°00'W & 25°22'N, 78°02'W & 25°25'N, and perhaps offshore of 1000 fathoms near 77°1'W & 25°17'N. The ocean conditions along the eastern coast of Andros Island do not appear as favorable for action. However, there is a finger of blue 85.0°F water that does move southward in 100-1000 fathom depths, that may provide action near 77°55'W & 25°10'N south to 77°48'W & 24°57'N, and near 77°42'W & 24°42'N.

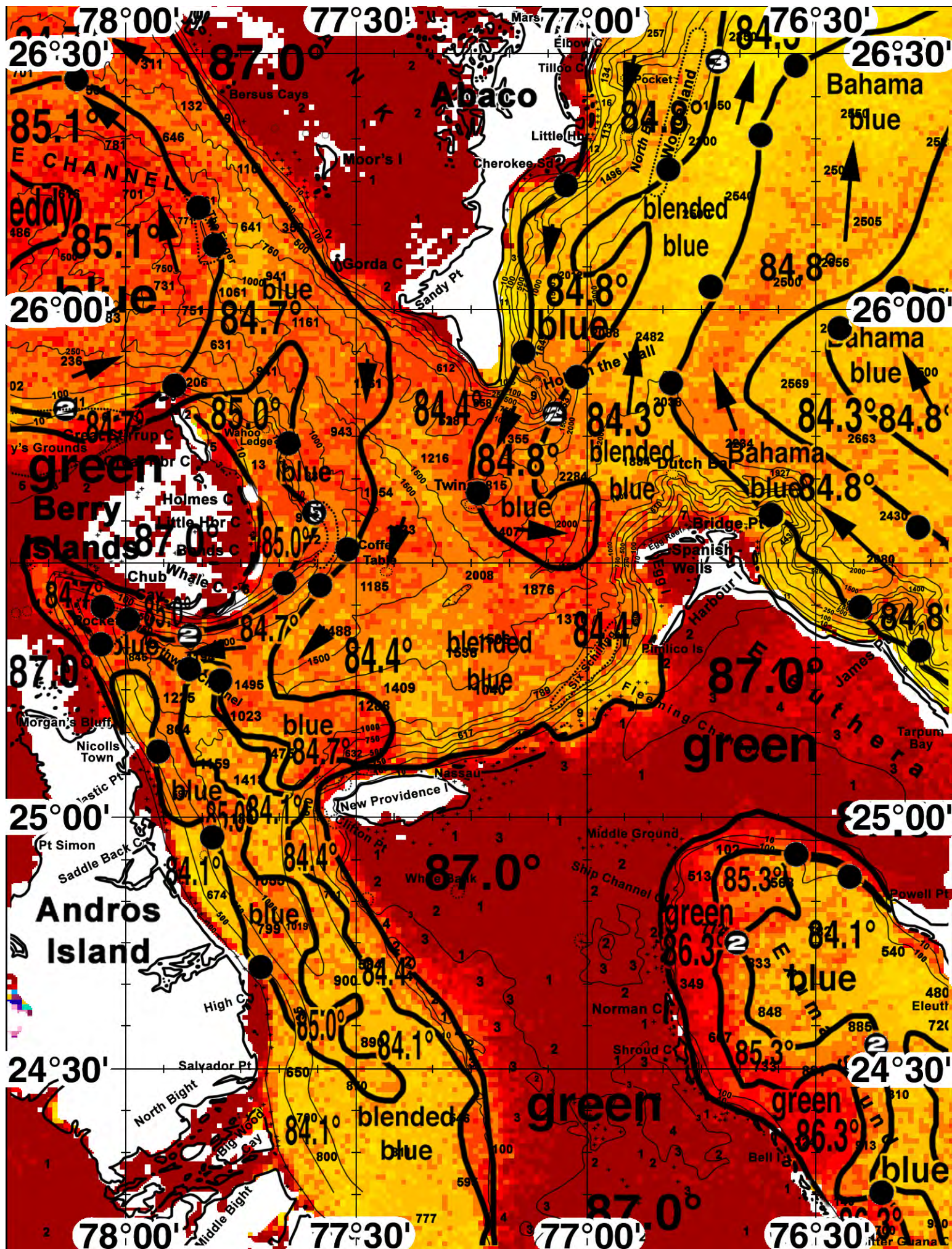
The ocean conditions east of Elbow Cay and south towards the Hole in the Wall suggest your better chances for fishing action with tuna, dolphin, wahoo and billfish will occur along the inshore edges of the 84.3°F Bahama blue water where it has remained favorable for multiple days just inshore of the Mushroom near 76°40'W & 26°44'N (3), within Little Abaco Canyon near 76°39'W & 26°40'N (3), just off the Wonderland near 76°43'W & 26°29'N (3) and 76°49'W & 26°16'N. Southeast of the Wonderland, a band of warmer 84.8°F Bahamas blue water may also provide offshore chances for fishing action where it lies near 76°43'W & 26°02'N, 76°07'W & 26°20'N, 76°32'W & 26°28'N, and near 76°30'W & 26°47'N. Additional offshore chances for action is also likely along the western wall of the eddy feature, where it lies from near 75°57'W & 26°43'N, 76°02'W & 26°29'N and near 76°05' W& 26°14'N. Offshore of the Hole in the Wall, the southward movement of the finger of Gulf Stream blue 84.8°F water will provide increased chances for action where it lies over the ledge near 77°07'W & 25°55'N, over the Hole in the Wall near 77°03'W & 25°47'N (2), and over the Twins near 77°13'W & 25°38'N. East of Eleuthera, the inshore push by a finger of Bahamas blue 84.8°F water will provide increased chances for action east of Bridge Point near 76°36'W & 25°36'N, and of James Point near 76°24'W & 25°24'N and 76°16'W & 25°20'N.

**Continued on next page...**

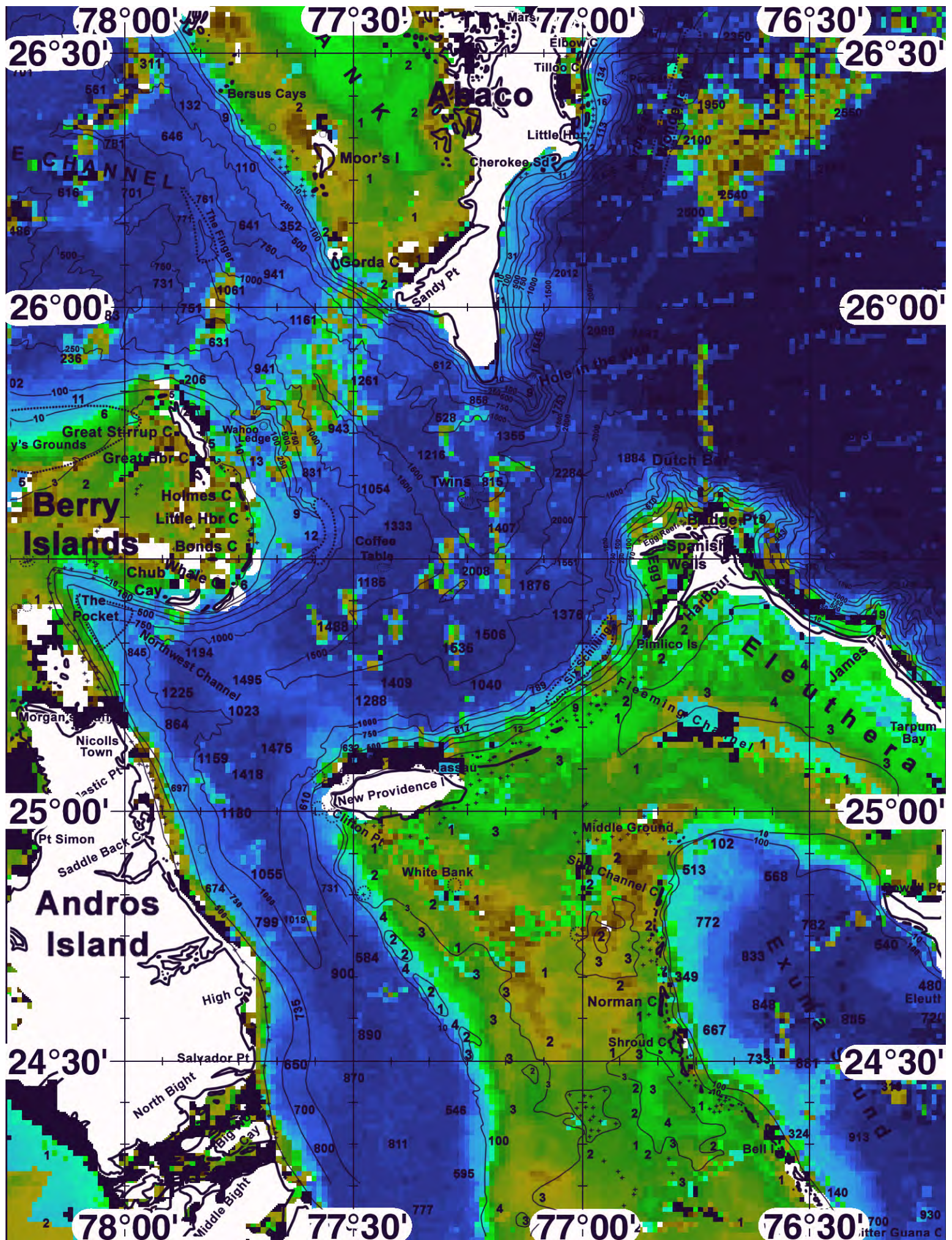
**ROFFS™ May Hours: Mon – Fri. 9:00 am – 7:00 pm EDT (sometimes later based on demand) with analysis order deadline before 3pm. We are now open on Saturdays 9AM to 4PM (sometimes we close earlier based on demand) analysis order deadline is 10:00am on Saturday. *Thank you for not sharing this analysis with non-paying anglers.*** Remember you can order and/or purchase your fishing analyses from our website (<http://www.roffs.com/>) or by email ([fishing@roffs.com](mailto:fishing@roffs.com)). Verbal updates are free while on the water between 10:30 AM and 11:59 AM (eastern time).

**The ROFFS™ Graphic analyses are on the next pages.**







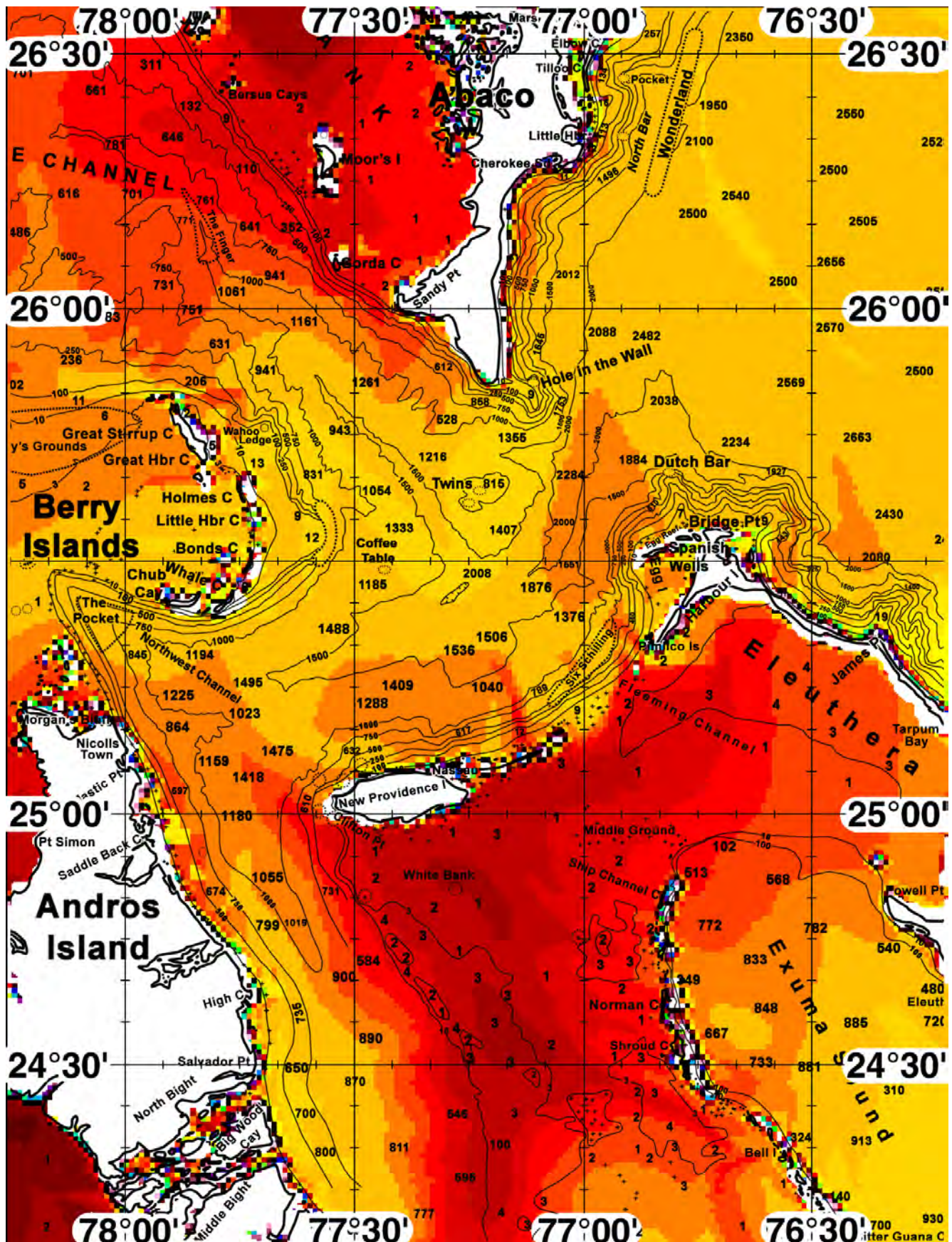






# FATHOM SCIENCE

## SST FORECAST for TOMORROW MORNING FISHING







# FATHOM SCIENCE

OCEAN COLOR/CHLOROPHYLL FORECAST for TOMORROW MORNING

