



WWW.ROFFS.COM



FISHING@ROFFS.COM



321.723.5759



@ROFFSFISHING



FISHERIES OCEANOGRAPHIC ANALYSIS

FOR THE ELEUTHERA OFFSHORE AREA (LAT./LONG)

UPDATED ON THURSDAY 02 JULY 2020 FOR THURSDAY P.M. AND FRIDAY FISHING ONLY

Based on a multiple factor oceanographic analysis, the indicated areas (hot spot dots) on the analysis mark the areas where bait concentrations are expected and where fishing action is expected to be better compared with other (non-indicated) areas. Numbers inside of the hot spot dots indicate the number of consecutive days that we have seen favorable oceanographic conditions in that location. These areas are not based on dock rumors or hearsay fishing reports, they are based on oceanographic knowledge and expertise. You should start fishing where you recognize other signs of good fishing conditions near these marked areas (ie. rips/slicks, weed lines, birds, etc). It is very important to use your sea surface temperature (SST) gauge to locate the boundaries of the water masses, which are outlined in black. PLEASE REMEMBER, rather than trying to find water masses based on the absolute temperature values shown on the map, search for the relative change in SST where the water mass boundaries occur. Arrows indicate the main current direction. 1 fathom = approximately 6 feet. Afternoon SST is likely to be 1.0°F or more WARMER than indicated by the morning SST calibration on this analysis. NUMBERS IN PARENTHESES AFTER LOCATIONS ARE NUMBER OF DAYS THAT SPOT HAS BEEN FAVORABLE.

Special Note: ROFFS™ will be closed on Monday, July 6, 2020 for our observance of Independence Day.

We are able to observe the ocean conditions in this area relatively clearly today using a combination of infrared and MODIS chlorophyll satellite imagery from last night, this morning and early this afternoon. The morning estimated sst of the main body of the Gulf Stream is 85.8°F. Overall, a large clockwise rotating eddy feature, centered east of Abaco near 75°20'W & 26°28'N, is pulling large amounts of 84.3°F-84.8°F Bahama blue water westward and against the coastlines of Cat Island, Eleuthera Island, and north towards Abaco Island improving overall conditions along the east coastlines with tuna, dolphin, wahoo and billfish, especially where conditions have remained favorable for multiple days east of Palmetto Point. Within Exuma Sound, the water appears to be blended and unstable where green water is being pulled eastward into the sound. Although unstable and changing conditions are not favorable for action, we are able to observe locations where your chances for action are improved over other areas. On your way offshore, keep a keen eye out for birds, bait and weed lines, as they are classic indicators for concentrations of fish.

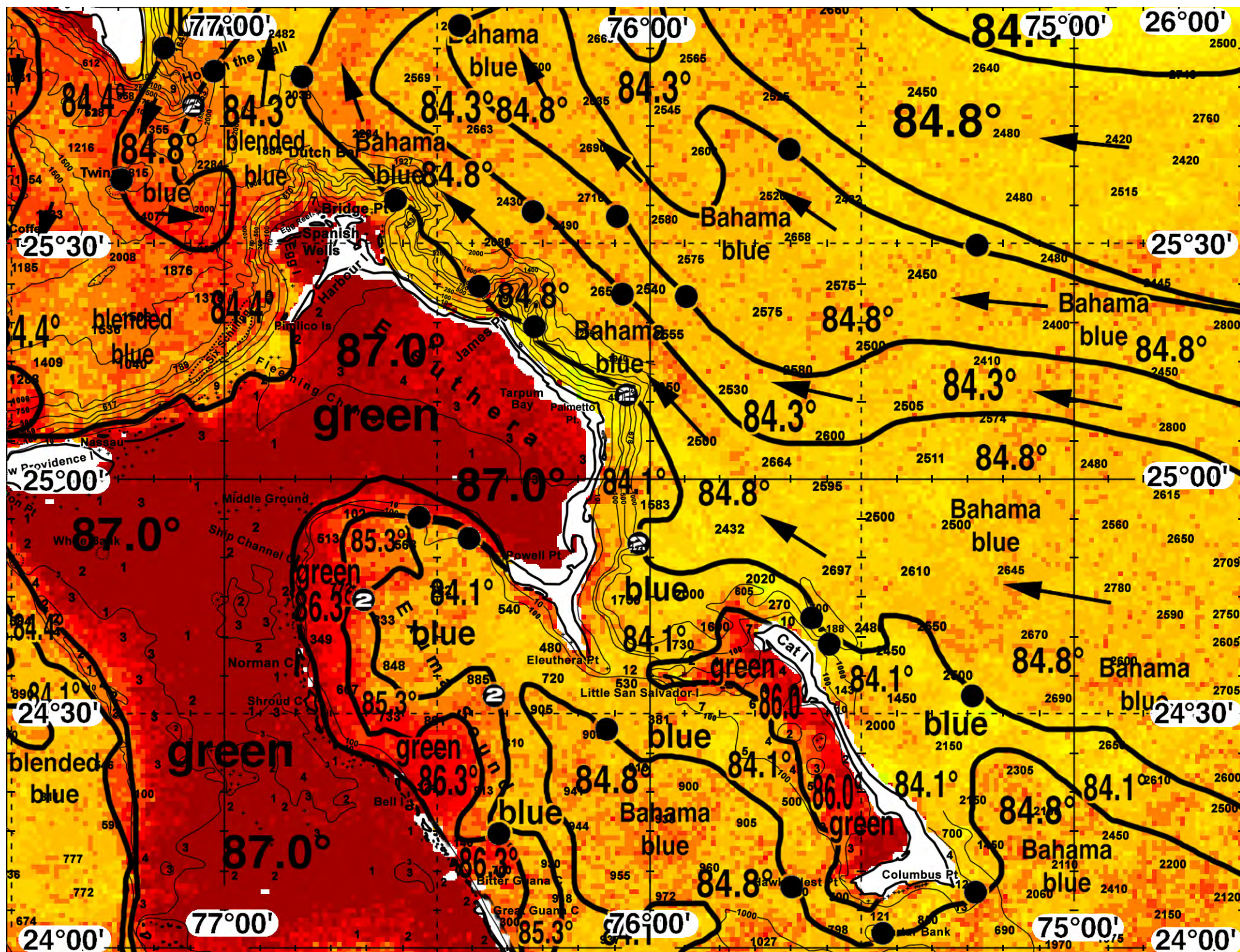
With this in mind, the ocean conditions suggest your better chances for action will occur east of Eleuthera Island where 84.8°F Bahamas blue water is being pushed westward and inshore over the ledges where conditions have remained favorable for the past two days near 76°02'W & 24°52'N (2) and off Palmetto Point near 76°03'W & 25°11'N (2), as well as, where it continues northward over the good bottom at James Point near 76°16'W & 25°20'N, 76°24'W & 25°24'N, towards the Dutch Bar near 76°36'W & 26°36'N and near 76°50'W & 25°46'N. If you find that the fishing action is not as favorable inshore, we suggest moving off the ledges and fish the next band of 84.3°F water where it lies in 2500-2700 fathoms near 86°03'W & 25°23'N, 76°16'W & 25°33'N, 76°05'W & 25°33'N and near 75°55'W & 25°23'N. If you are looking to fish towards Cat Island, blue 84.8°F water also pushes westward and inshore over the ledge providing increased chances for action near 75°37'W & 24°43'N and 75°35'W & 24°38'N, and south around Columbus Point near 75°13'W & 24°07'N, 75°27'W & 24°02'N, and near 75°40'W & 24°08'N. Offshore of the Hole in the Wall, the southward movement of the finger of Gulf Stream blue 84.8°F water will provide increased chances for action where it lies over the ledge near 77°07'W & 25°55'N, over the Hole in the Wall near 77°03'W & 25°47'N (2), and over the Twins near 77°13'W & 25°38'N.

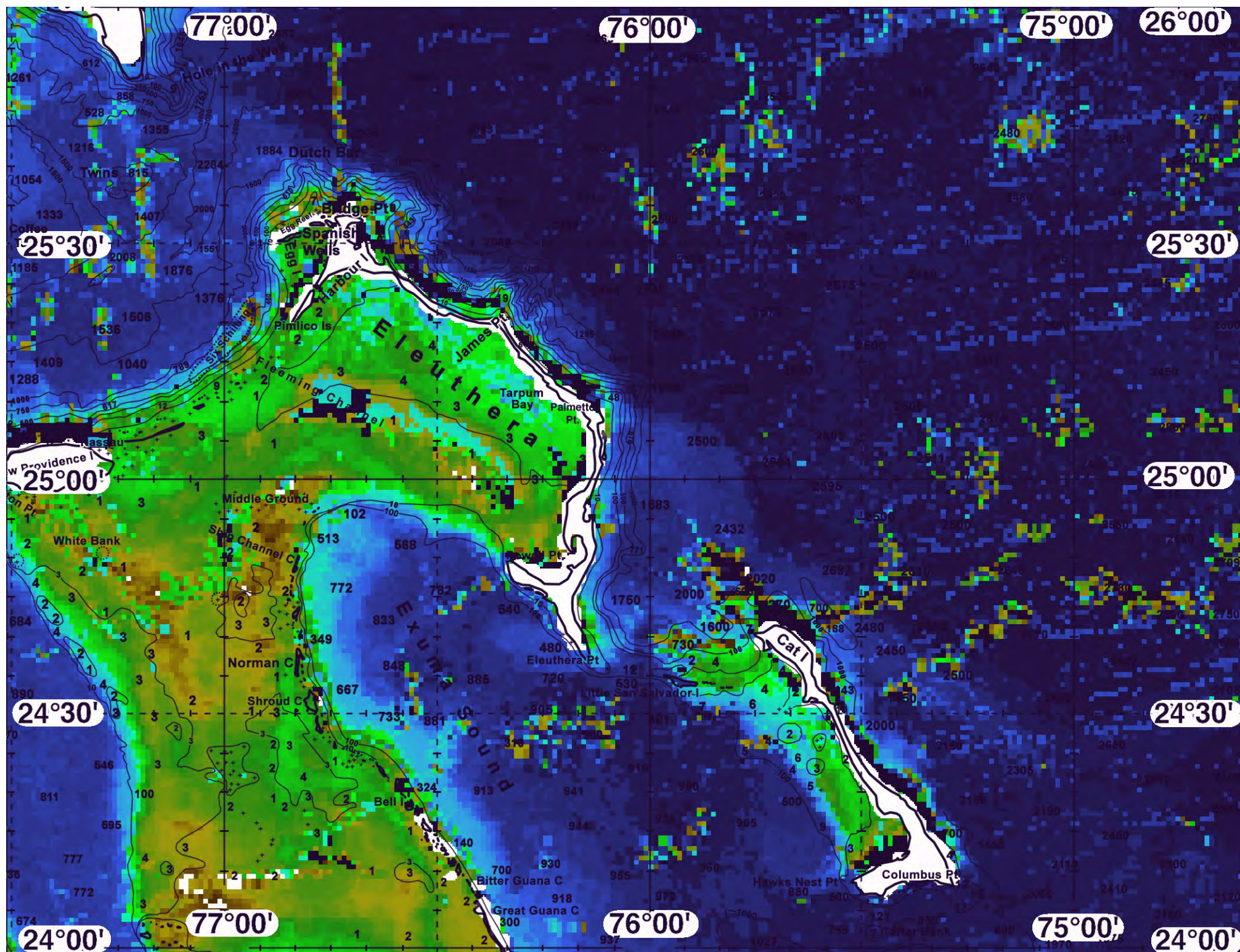
Continued on next page...

Within Exuma Sound, your better chances for fishing action with a combination of tuna, dolphin, wahoo and billfish will occur along the western edges of the blue 84.1°F water where it has remained favorable for the past two days near 76°41'W & 24°48'N (2) and 76°22'W & 24°32'N (2). Increased chances for action closer to Powell Point will occur along the blue to green water convergence zone where it lies over 100 fathoms near 76°25'W & 24°53'N and 76°32'W & 24°55'N.

ROFFS™ May Hours: Mon – Fri. 9:00 am – 7:00 pm EDT (sometimes later based on demand) with analysis order deadline before 3pm. We are now open on Saturdays 9AM to 4PM (sometimes we close earlier based on demand) analysis order deadline is 10:00am on Saturday. *Thank you for not sharing this analysis with non-paying anglers.* Remember you can order and/or purchase your fishing analyses from our website (<http://www.roffs.com/>) or by email (fishing@roffs.com). Verbal updates are free while on the water between 10:30 AM and 11:59 AM (eastern time).

The ROFFS™ Graphic analyses are on the next pages.

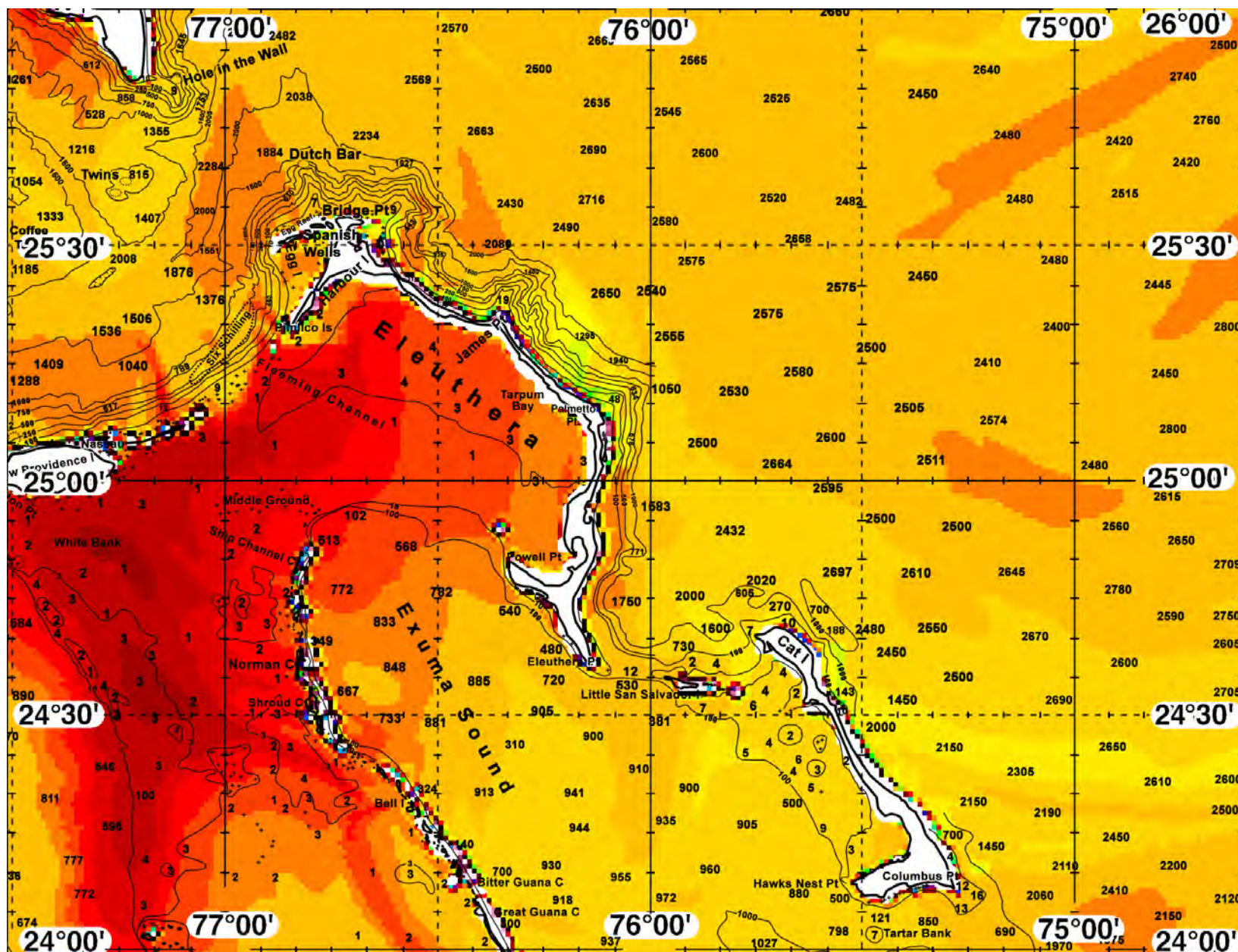






FATHOM SCIENCE

SST FORECAST for TOMORROW MORNING FISHING





FATHOM SCIENCE

OCEAN COLOR/CHLOROPHYLL FORECAST for TOMORROW MORNING

