



WWW.ROFFS.COM



FISHING@ROFFS.COM



321.723.5759



@ROFFSFISHING

FISHERIES OCEANOGRAPHIC ANALYSIS FOR THE KEY LARGO TO SUGARLOAF KEY ANALYSIS AREA (LAT./LONG.)

UPDATED ON FRIDAY 10 JULY 2020 FOR FRIDAY P.M. AND SATURDAY FISHING ONLY

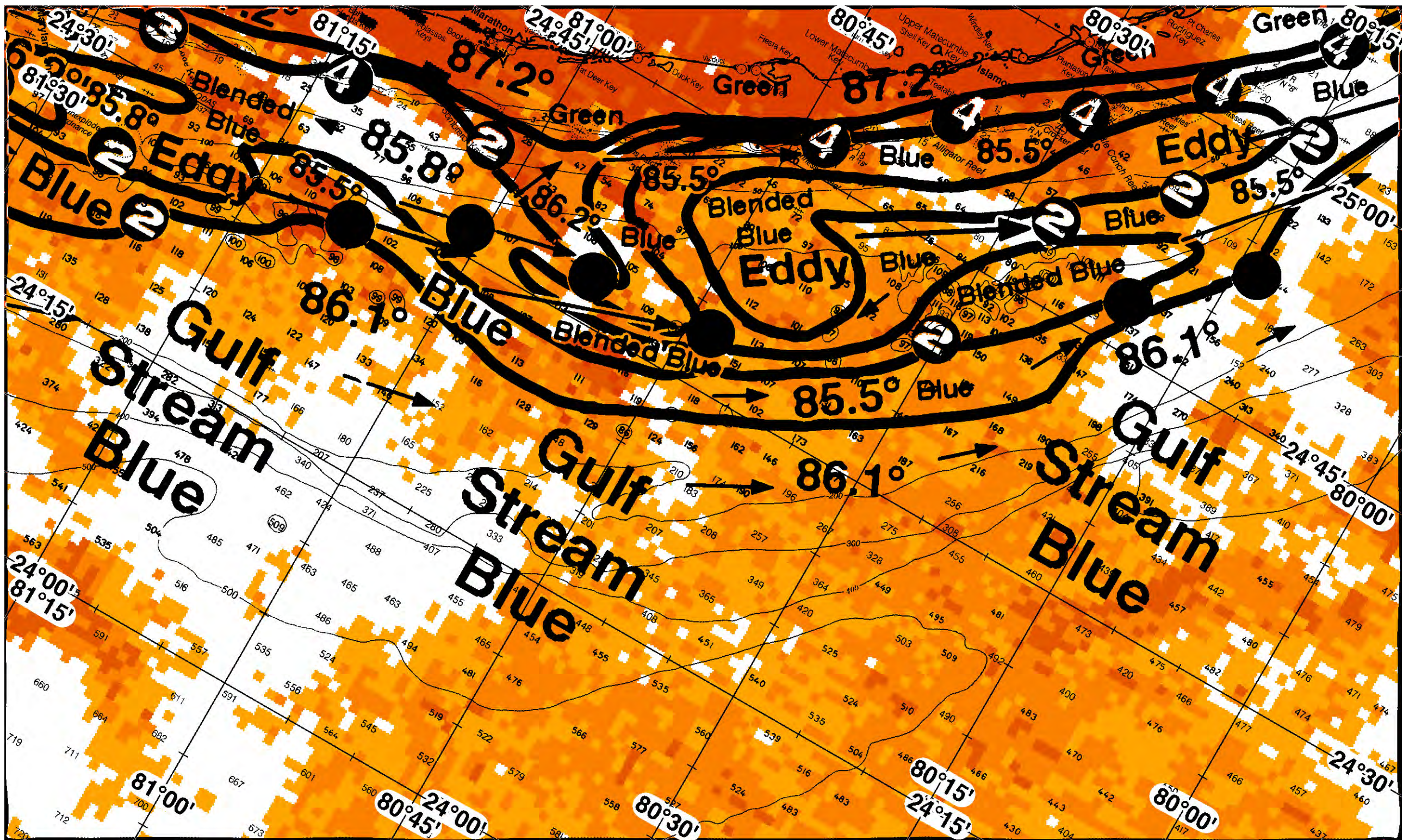
Based on a multiple factor oceanographic analysis, the indicated areas (hot spot dots) on the analysis mark the areas where bait concentrations are expected and where fishing action is expected to be better compared with other areas. Numbers inside of the hot spot dots indicate the number of consecutive days that we have seen favorable oceanographic conditions in that location. These areas are not based on dock rumors or hearsay fishing reports, they are based on oceanographic knowledge and expertise. You should start fishing where you recognize other signs of good fishing conditions near these marked areas (ie. rips/slicks, weed lines, birds, etc). It is very important to use your sea surface temperature (SST) gauge to locate the boundaries of the water masses, which are outlined in black. PLEASE REMEMBER, rather than trying to find water masses based on the absolute temperature values shown on the map, search for the relative change in SST where the water mass boundaries occur. Arrows indicate the main current direction. 1 fathom = approximately 6 feet. Afternoon SST is likely to be 1.0°F or more WARMER than indicated by the morning SST calibration on this analysis. NUMBERS IN PERENTHESIS AFTER LOCATIONS ARE NUMBER OF DAYS THAT SPOT HAS BEEN FAVORABLE. **Fathom Science SST and Ocean Color/Chlorophyll Forecasts now included on final two pages.**

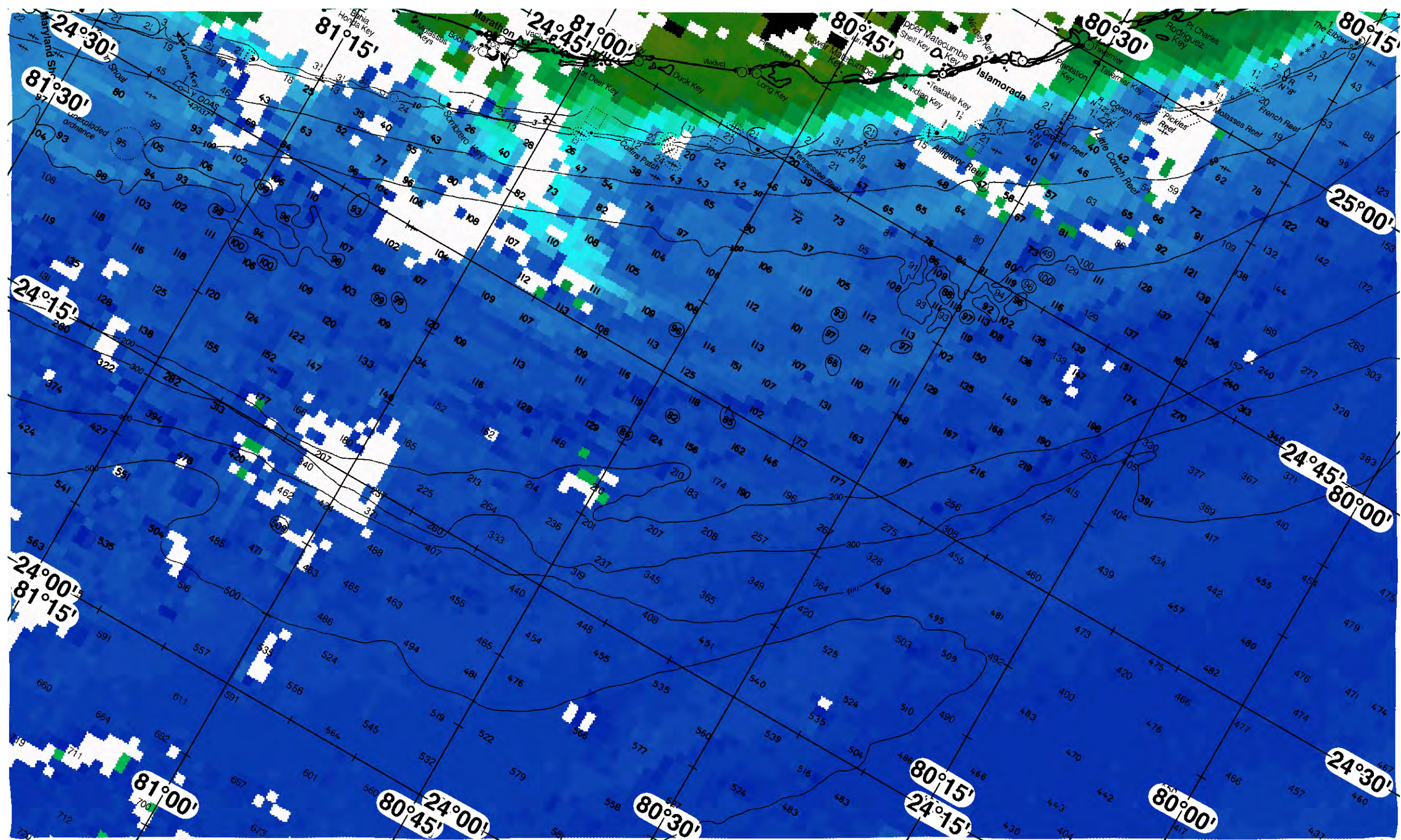
We continue to have difficulty seeing the area, however, we were able to provide this analysis using a combination of morning SST and chlorophyll imagery from this afternoon area to increase your chances of kingfish, tuna, wahoo, dolphin, and billfish. Overall the Gulf Stream is 86.1°F with three eddies in the charted area. Starting to the west, we continue to observe an counter clockwise rotating eddy centered over the Ups and Downs near 81°20'W & 24°25'N, resulting in a filament of blended blue water circulating inshore along 30 fathoms from Marathon to Key West. By tomorrow, we expect this eddy will be centered off of Marathon, resulting in similarly favorable conditions from Marathon to Sugar Loaf Key. Looking east, the next eddy is centered over 100 fathoms near 80°42'W & 24°40'N. Additionally, we've observed an eddy formation over 60 fathoms off of Key Largo near 80°21'W & 24°58'N. Collectively these features are pushing a relatively thin filament of blue 85.5°F water inshore over 30-50 fathoms from Key Largo to Fiesta Key. This has resulted in a large filament of blended blue water over 50-100 fathoms between these two eddies, as well as a relatively large filament of blended blue water pulling offshore of Marathon and east along 100-150 fathoms to approximately Key Largo in between the blue eddy filament and the Gulf Steam. By tomorrow, we expect this feature will collectively move 10-15 miles east, resulting in similarly favorable conditions along the blue eddy filament inshore from Card Sound to Islamorada. We have included an ocean color/chlorophyll composite image from this afternoon so you can get a sense of where the bluer and greener water is located (email only, white=clouds).

With this in mind conditions suggest your best chance for tuna, dolphin, wahoo, and billfish out of the Marathon area will occur along the blue 85.8°F eddy filament edges we predict will be along 80°44'W & 24°34'N 80°53'W & 24°34'N and 81°00'W & 24°32'N. If this area isn't as productive as you'd like, similarly favorable blended blue to blue water mass boundaries are predicted along the Ups and Downs near 81°08'W & 24°28'N to 81°22'W & 24°25'N (2). Looking inshore for an additional chance of tuna, wahoo, sailfish, and kingfish, we suggest fishing the green to blended blue eddy edges we predict will be pushing inshore along 25 fathoms near 81°02'W & 24°37'N (2), 81°14'W & 24°34'N (4), and 81°23'W & 24°34'N (2).

For those of you interested in fishing the Key Largo to Islamorada area, conditions suggest your best chances for tuna, wahoo, dolphin, and billfish will occur along the green to blue 86.2-85.5°F edges we've observed along 30 fathoms for up to four days along 80°16'W & 25°08'N (4), 80°21'W & 25°02'N (4), 80°28'W & 24°56'N (4), 80°35'W & 24°54'N (4) and 80°43'W & 24°47'N (4). If this area isn't as productive as you'd like, favorable conditions have also been observed along the blended blue to blue filament eddy core edges we've observed along 60 fathoms near 80°15'W & 25°04'N (2), 80°20'W & 24°56'N (2), and 80°28'W & 24°50'N (2). Further offshore, you may additionally want to fish the blended blue to blue 85.8-85.5°F edges along the Islamorada Humps for up to two days near 80°30'W & 24°40'W to 80°20'W & 24°43'N.

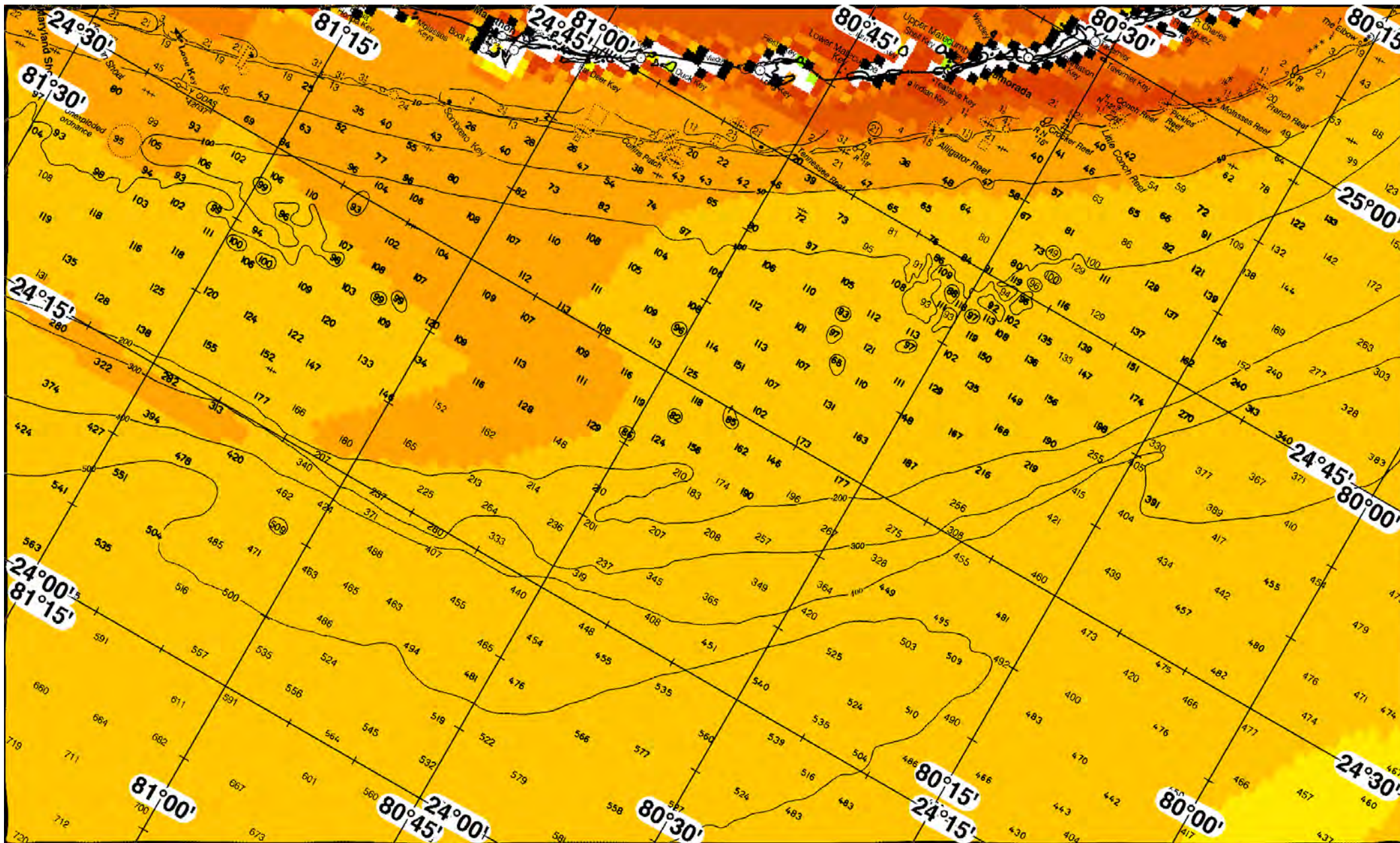
ROFFS™ May Hours: Mon – Fri. 9:00 am – 7:00 pm EDT (sometimes later based on demand) with analysis order deadline before 3pm. We are now open on Saturdays 9AM to 4PM (sometimes we close earlier based on demand) analysis order deadline is 10:00am on Saturday. *Thank you for not sharing this analysis with non-paying anglers.* Remember you can order and/or purchase your fishing analyses from our website (<http://www.roffs.com/>) or by email (fishing@roffs.com). Verbal updates are free while on the water between 10:30 AM and 11:59 AM (eastern time). **The ROFFS™ Graphic analysis is on the next page.**







SST FORECAST for TOMORROW MORNING FISHING





FATHOM SCIENCE

OCEAN COLOR/CHLOROPHYLL for TOMORROW MORNING FISHING

