



WWW.ROFFS.COM



FISHING@ROFFS.COM



321.723.5759



@ROFFSFISHING

FISHERIES OCEANOGRAPHIC ANALYSIS

FOR THE KEY WEST OFFSHORE AREA (LAT./LONG)

UPDATED ON WEDNESDAY 15 JULY 2020 FOR WEDNESDAY P.M. AND THURSDAY FISHING ONLY

Based on a multiple factor oceanographic analysis, the indicated areas (hot spot dots) on the analysis mark the areas where bait concentrations are expected and where fishing action is expected to be better compared with other areas. Numbers inside of the hot spot dots indicate the number of consecutive days that we have seen favorable oceanographic conditions in that location. These areas are not based on dock rumors or hearsay fishing reports, they are based on oceanographic knowledge and expertise. You should start fishing where you recognize other signs of good fishing conditions near these marked areas (ie. rips/slicks, weed lines, birds, etc). It is very important to use your sea surface temperature (SST) gauge to locate the boundaries of the water masses, which are outlined in black. PLEASE REMEMBER, rather than trying to find water masses based on the absolute temperature values shown on the map, search for the relative change in SST where the water mass boundaries occur. Arrows indicate the main current direction. 1 fathom = approximately 6 feet. Afternoon SST is likely to be 1.0°F or more WARMER than indicated by the morning SST calibration on this analysis. NUMBERS IN PERENTHESIS AFTER LOCATIONS ARE NUMBER OF DAYS THAT SPOT HAS BEEN FAVORABLE. **Fathom Science SST and Ocean Color/Chlorophyll Forecasts now included on final two pages.**

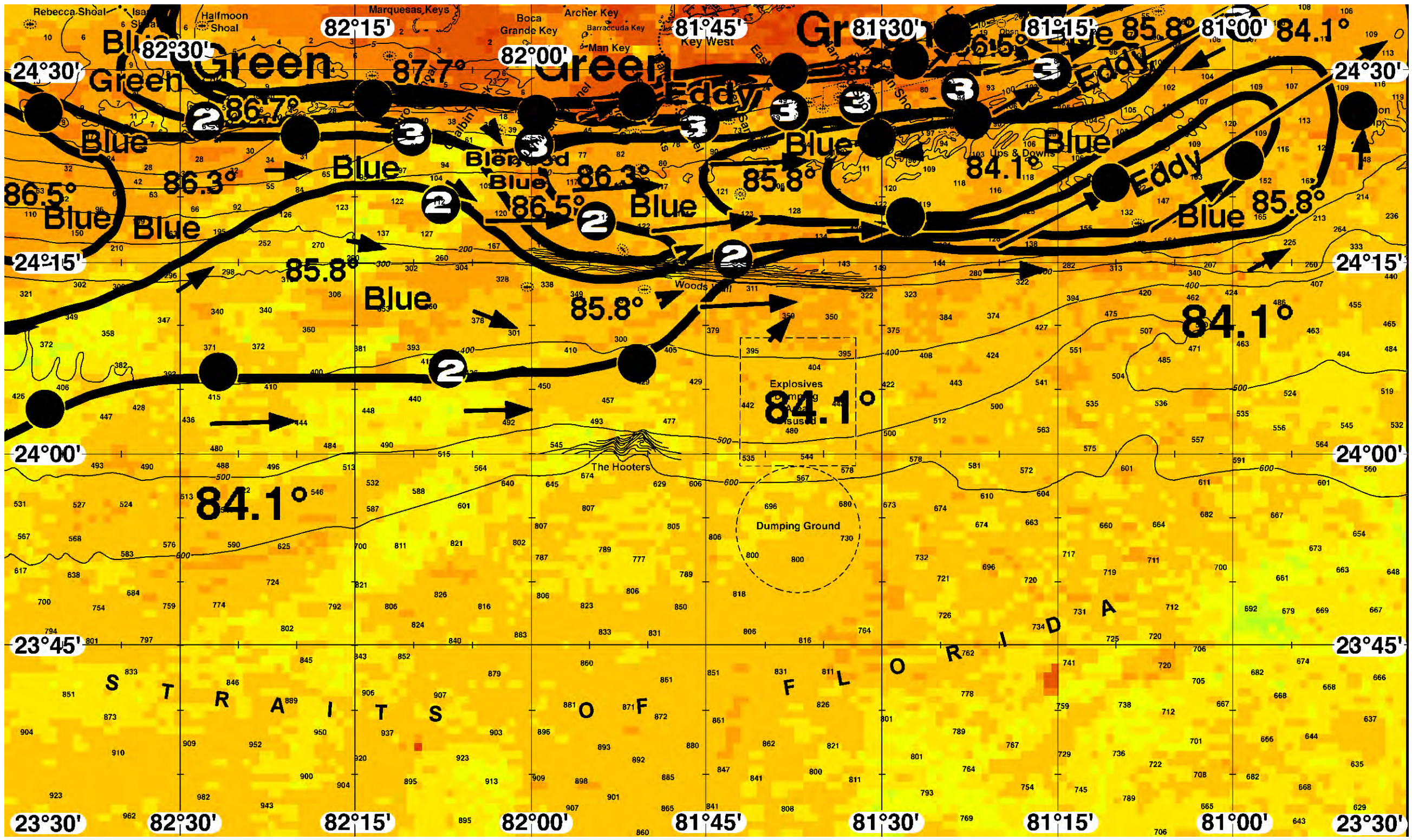
We continue to have difficulty seeing the area, however, we were able to provide this analysis using a combination of morning SST and chlorophyll imagery from this afternoon area to increase your chances of kingfish, tuna, wahoo, dolphin, and billfish. Overall the Gulf Stream is 84.1°F west of Key West, and along 130-160 fathoms east of Key West. The main features in the area are the two Gulf Stream eddies we've observed along 30 fathoms off of Key West near 81°45'W & 24°27'N, and off of Marathon near 81°12'W 7 24°35'N. As a result, we've observed filament of blended blue 86.5°F water circulating into 10 fathoms inshore in these areas. By tomorrow, we expect this eddy off of Key West will be off of Marathon, and the eddy off of Marathon will be east of the charted area. Looking further offshore, we've additionally observed a relatively large eddy we've over 130 fathoms south of the Ups and Downs near 81°07'W & 24°20'N. As a result, we've observed al relatively large filament of warmer blue 85.8-84.1°F water extending west along 70-100 fathoms from Looe Key to Key West. Additionally, we've observed a large offshore flow of warmer blended blue to blue 86.5°F water offshore of Boca Grand Key. We have included an ocean color/chlorophyll composite image from this afternoon so you can get a sense of where the bluer and greener water is located (email only, white=clouds).

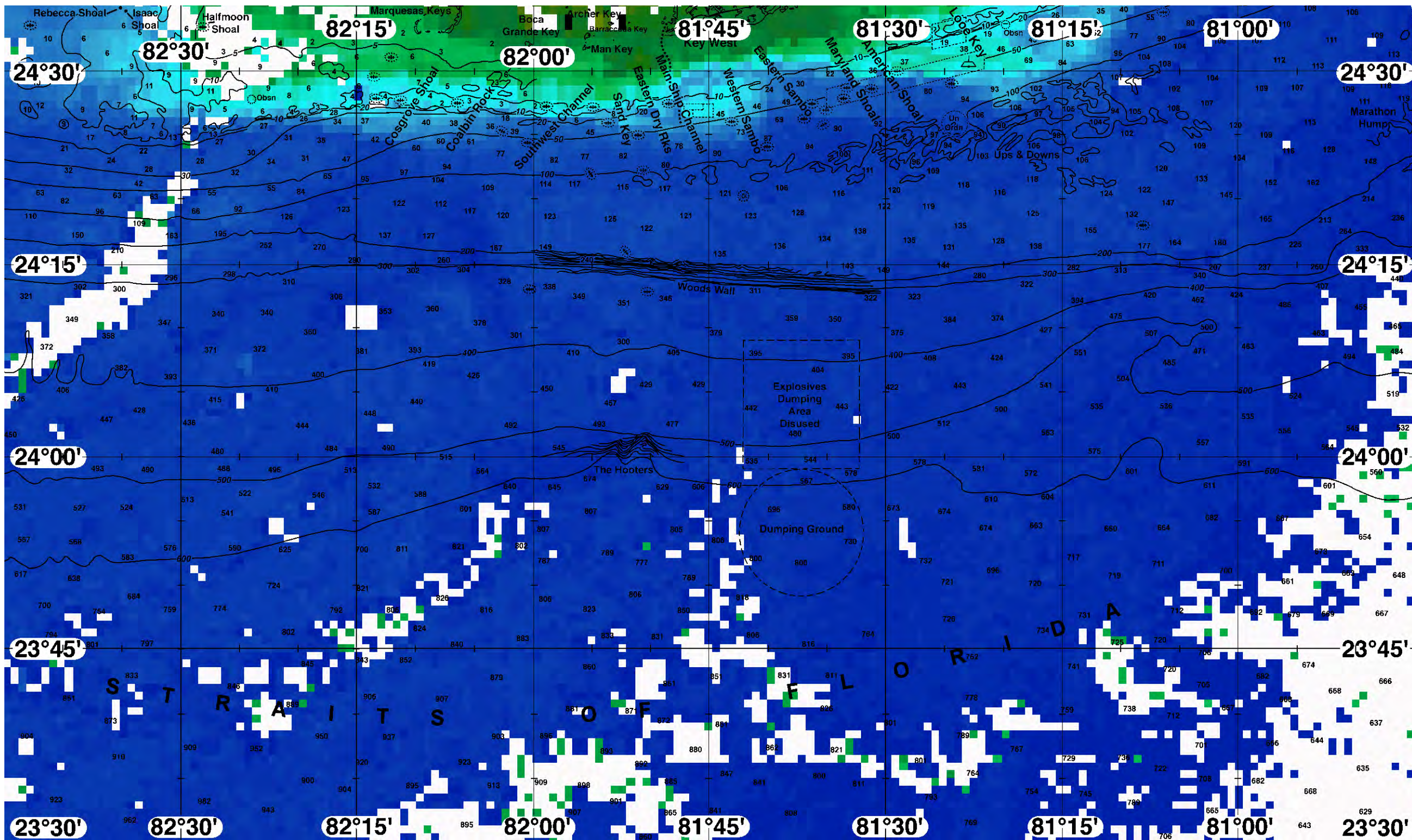
With this in mind conditions suggest your best chance for tuna, dolphin, wahoo, and sailfish out of the Key West to Marathon area will occur along the blended blue to blue eddy filament edges predict will be along 15-20 fathoms near 81°25'W & 24°32'N to 81°27'W 7 24°30'N. If this area isn't as productive as you'd like, we suggest fishing the blue 86.5-86.3°F edge along 40 fathoms near 81°45'W & 24°26'N (3), 81°37'W & 24°27'N (3), 81°32'W & 24°27'N (3), and 81°15'W & 24°30'N (3). If this area isn't as productive as you'd like or you are specifically targeting marlin and dolphin, we suggest heading offshore to the 86.3-84.1°F eddy edges we predict will be over the Ups and Downs near 81°30'W & 24°25'N, 81°23'W & 24°26'N, and 81°30'W & 24°27'N. For those of you interested in fishing the Gulf Stream for an additional chance of tuna, dolphin, and billfish, we suggest fishing the 86.3-84.1°F edges along we predict will be along Woods Wall near 81°43'W & 24°15'N (2) to 130 fathoms near 81°28'W & 24°17'N, and 81°13'W & 24°21'N.

For those of you interested in fishing the west of Key West, conditions suggest your best chances for tuna, dolphin, wahoo, and billfish will occur along the blue green to blu86.7-86.3°F edges we've observed along 50 fathoms for up to three days near 82°00'W & 24°19'N (3), 82°10'W & 24°20'N (3). If this edge isn't as productive as you'd like, we suggest working south to the 86.3-85.8°F blue edges along 120-130 fathoms near 81°55'W & 24°17'N (2) to 82°07'W & 24°20'N (2).

ROFFS™ May Hours: Mon – Fri. 9:00 am – 7:00 pm EDT (sometimes later based on demand) with analysis order deadline before 3pm. We are now open on Saturdays 9AM to 4PM (sometimes we close earlier based on demand) analysis order deadline is 10:00am on Saturday. *Thank you for not sharing this analysis with non-paying anglers.* Remember you can order and/or purchase your fishing analyses from our website (<http://www.roffs.com/>) or by email (fishing@roffs.com). Verbal updates are free while on the water between 10:30 AM and 11:59 AM (eastern time).

The ROFFS™ Graphic analysis is on the next page.

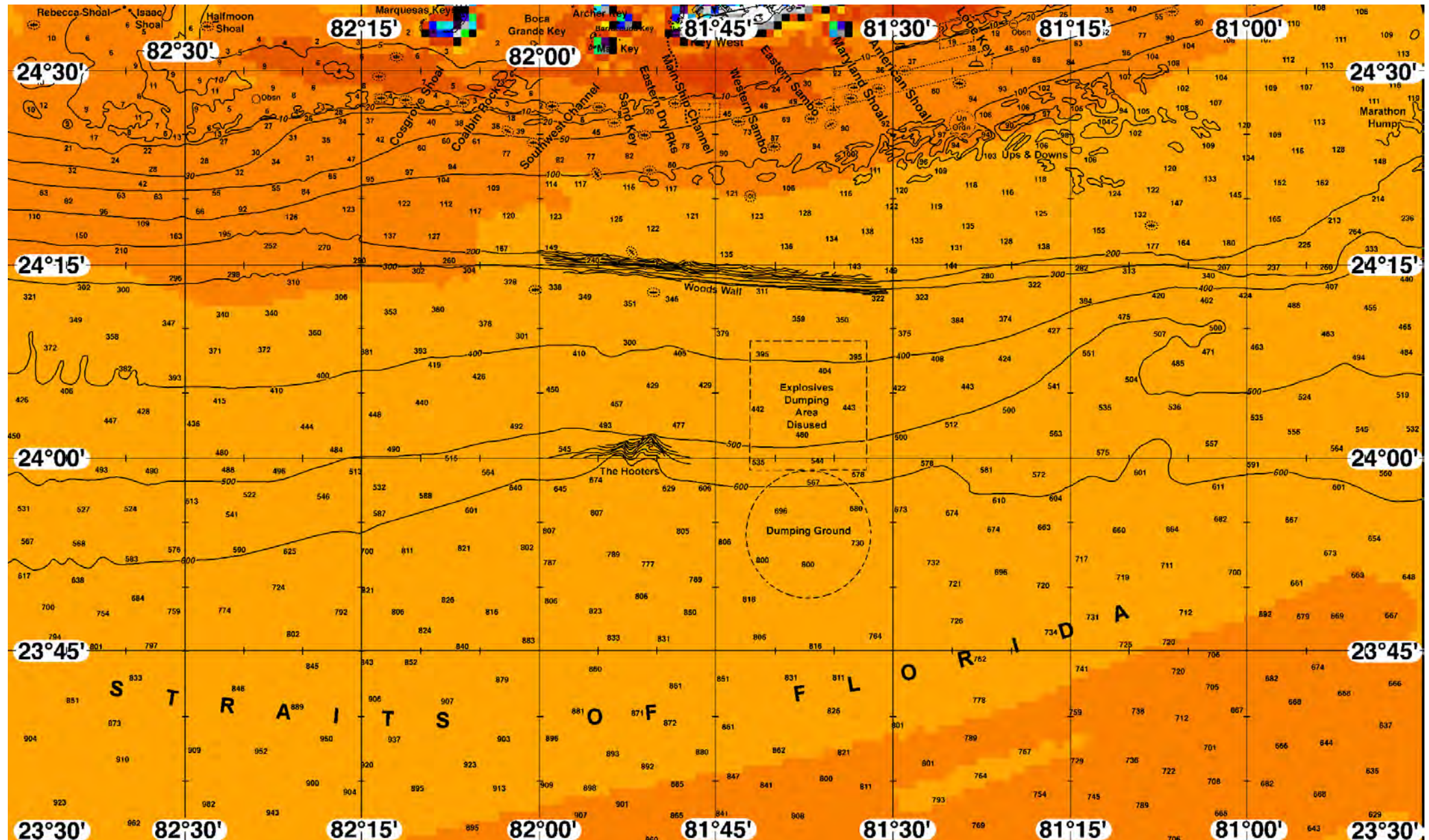






FATHOM SCIENCE

SST FORECAST for TOMORROW MORNING FISHING





FATHOM SCIENCE

OCEAN COLOR/CHLOROPHYLL for TOMORROW MORNING FISHING

