

ROFFER'S OCEAN FISHING FORECASTING SERVICE(321) 723-5759 // WWW.ROFFS.COM

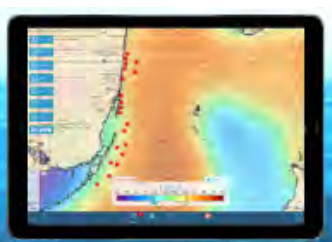
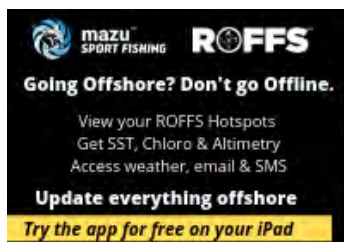
ROFFS FISHERIES OCEANOGRAPHIC ANALYSIS

FOR THE BOCA GRANDE INSHORE AREA (LAT./LONG.)

UPDATED ON TUESDAY 14 MAY 2019 FOR TUESDAY P.M. & WEDNESDAY FISHING ONLY

Based on a multiple factor analysis, the symbols (hot spot dots) mark the areas where bait concentrations are expected and where fishing action are expected to be better compared with other (non-marked) areas. These are not based on dock rumors or hearsay fishing reports. Fishing reports are stated as such. You should start fishing where you recognize other signs of good fishing conditions near these marked areas. It is very important to use your sea surface temperature (sst°) gauge to locate the boundaries of the water masses, which are outlined. Rather than trying to find water based on the absolute temperature values shown on the map, search for the relative change in sst° where the water mass boundaries occur. Arrows indicate the main current direction. Numbers inside of the dots indicate the number of consecutive days that we have seen favorable conditions in that location. Bottom depths in fathoms (1 fathom = approximately 6 feet). **NUMBERS IN PERENTHESIS AFTER LAT./LONG. LOCATIONS ARE NUMBER OF DAYS THAT SPOT HAS BEEN FAVORABLE.**

We were able to see this area clearly from imagery from yesterday and this morning (before it clouded up completely) for mainly kingfish and cobia action but perhaps some offshore sailfish and dolphin when you get offshore of 15-20 fathoms and into the bluer water. As always, please keep in mind that your better chances for kingfish action are likely to occur where you locate either the SST and/or the ocean color (greener to bluer) water mass boundaries especially over good bottom structure. We have been able to follow the ocean conditions in this area today using infrared (sst) and ocean color (chlorophyll+CDOM). When making a decision on where to fish please keep in mind that the favorable conditions with that intermediate water clarity and chlorophyll +CDOM (blue-green to blended blue water) are likely MORE favorable than the green turbid inshore waters based on past research projects. Also, keep in mind that a sudden change of wind direction will destabilize the indicated water mass boundaries, and a steady strong wind in one direction will move the water mass boundaries according to the wind direction. The forecast, if correct, is for winds to be shifting from out of the Northwest and North at 5-10 knots over the next 24 hours. Right now it is blowing out of the west to southwest at 10-20 knots so please plan accordingly. We have also included an ocean color/chlorophyll image from yesterday afternoon so you get a sense of where the bluer and greener water is located (e-mail only, white = clouds). Please keep in mind that you may want to use the ocean color/chlorophyll image as a guide on where to fish over the better bottom structure as there is a lack of strong SST boundaries especially when you get offshore of the 5-10 fathom range.



With all this in mind, some of the better conditions may be east of Charlotte Harbor along the Power Pole Reef and 8 Mile Ledges and wreck area and the green to bluer-green 82.0°F to 81.1°F water mass boundary near 82°23'W & 26°35-40'N (2) and extending south to the 5 Fathom Ledges and same water mass boundary near 82°23'W & 26°23'N (2). Additional favorable conditions appear to occur north to the Desmond Reef and similar green to bluer-green 82.0°F to 81.1°F water mass boundary and also over the Wiggins 14 Mile Reef to Freshwater Spring near 82°09'W & 26°14'N (2) to near 82°00'W & 26°15'N (2). If these conditions do not produce then fish east to the 10 fathom ledges and the blue-green cleaner water and 80.3°F to 81.1°F edges near the 11 Fathom Ledge and Shark Spot near 82°30-33'W & 26°40-41'N to Boxcar Reef near 82°38'W & 26°42'N (2). Farther north, we like the conditions along the green to bluer-green 81.1°F to 80.3°F edges along the 10 fathom contour and lumps near 82°35-37'W & 26°53-59'N (2) and inshore over the wreck and warmer water near 82°35'W & 27°04'N (2). Farther north, even though it looks cloudy we were able to pick out some ocean color boundaries in the green to bluer-green and warmer inshore to cooler water offshore favorable for two days along the 10 fathom contour and over the Reefs near 82°45'W & 27°12-13'N (2) to the Reefs near the Cuda Hole and northwest near 82°45'W & 27°13-14'N (2) to near 82°48-50'W & 27°13-15'N (2). Offshore, in the bluer water we like the 15 Fathom Boca Grande Wreck and 79.6°F to 80.3°F boundary near 82°51'W & 26°45'N (2) or south to the bluer 80.3°F to 81.1°F 20 fathom contour area near 82°48-50'W & 26°10-15'N or farther south in the warmer but bluer 81.1°F to 82.0°F water mass boundary near 82°20'W & 25°52-56'N (2).

ROFFS™ Spring Hours: Mon – Fri. 9:00 am – 7:00 pm EDT. We are now open Saturday's; please order before 9AM Saturday for Sunday fishing. **May 1st to September 27th, please order your area before 2pm Eastern Time. Thank you for not sharing this analysis with non-paying fishermen.** Remember you can order and/or purchase your fishing analyses from our website (<http://www.roffs.com/>) or by email (fish7@roffs.com). Verbal updates are free between 10:30 AM and 11:59 AM (eastern time) only. **The ROFFS™ Graphic analysis is on the next page.**

