



WWW.ROFFS.COM



FISHING@ROFFS.COM



321.723.5759



@ROFFSFISHING

**FISHERIES OCEANOGRAPHIC ANALYSIS FOR THE SPANISH CAY OFFSHORE AREA (LAT./LONG.)  
UPDATED ON FRIDAY 30 APRIL 2021 FOR FRIDAY P.M. & SATURDAY FISHING ONLY**

Based on a multiple factor analysis, the symbols (hot spot dots) mark the areas where bait concentrations are expected and where fishing action are expected to be better compared with other (non-marked) areas. These are not based on dock rumors or hearsay fishing reports. Fishing reports are stated as such. You should start fishing where you recognize other signs of good fishing conditions near these marked areas. It is very important to use your sea surface temperature (sst°) gauge to locate the boundaries of the water masses, which are outlined. Rather than trying to find water based on the absolute temperature values shown on the map, search for the relative change in sst where the water mass boundaries occur. Arrows indicate the main current direction. Numbers inside of the dots indicate the number of consecutive days that we have seen favorable conditions in that location. 1 fathom = approximately 6 feet. Afternoon SST is likely to be 1.0°F or greater than indicated by the morning calibration on this analysis. **NUMBERS IN PARENTHESIS AFTER LOCATIONS ARE NUMBER OF DAYS THAT SPOT HAS BEEN FAVORABLE.**

We now provide cloud-free SST and ocean color/chlorophyll data from our new partner Fathom Science™ for a 6am forecast for the next day. This data is cutting-edge, high resolution, cloud-free modeled data that has been evaluated and validated by ROFFS™ along with other oceanographic scientists and proven to be the most accurate cloud-free data available to guide you in the right direction to increase your chances for fishing action. The cloud-free data will not be as accurate as the real time satellite imagery, but it will guide you to the general area for the better features, especially when it is cloudy. For more information please visit <https://www.roffs.com/faqs/>

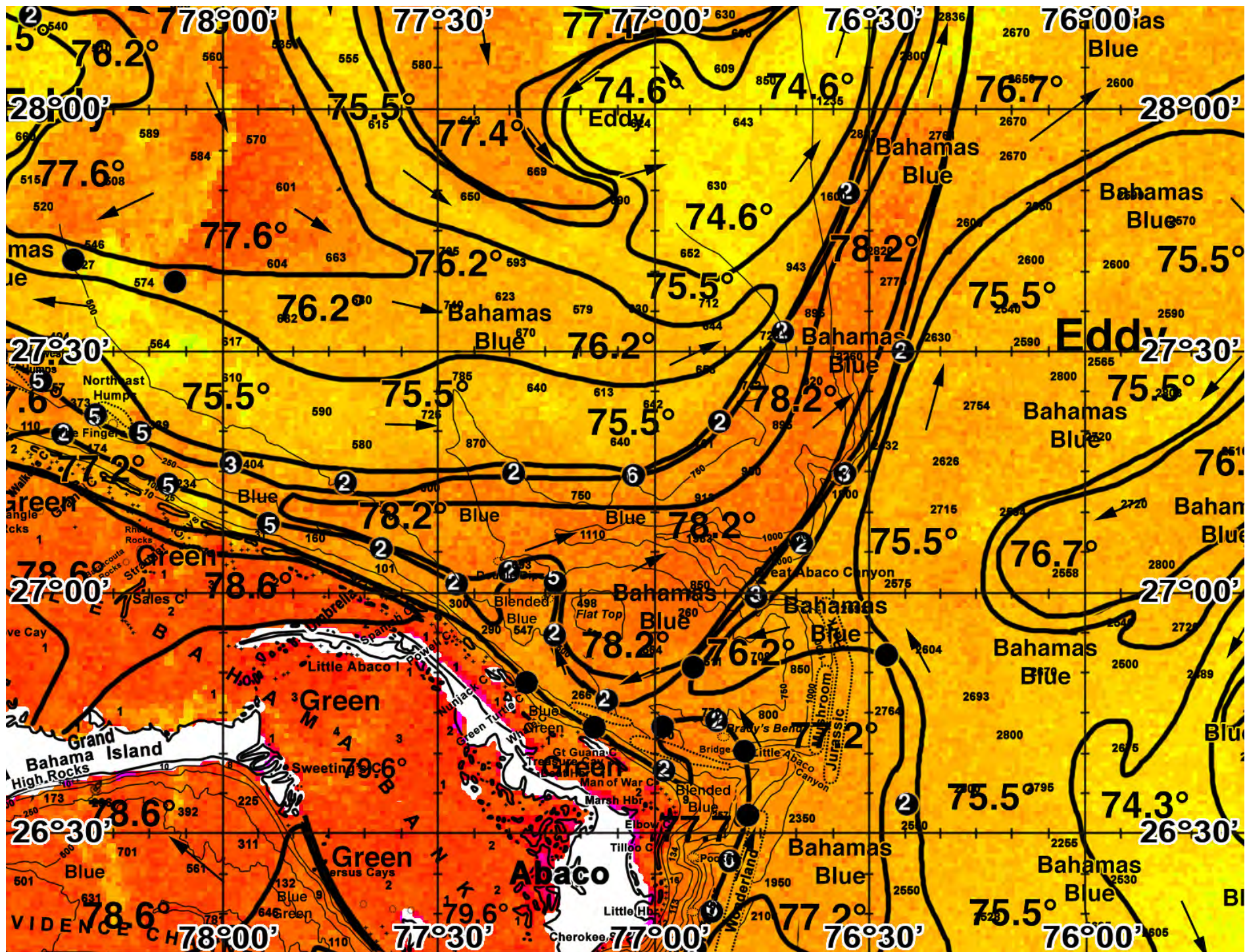
We were able to use today's infrared sst° and yesterday's afternoon and today's MODIS/VIIRS/Sentinel ocean color/chlorophyll composite satellite imagery for this analysis to follow the oceanographic conditions for six days. Overall, we continue to observe the relatively large, clockwise rotating eddy formation northeast of Abaco (centered near 75°58'W & 27°32'N). Additionally, a smaller, counter-clockwise rotating eddy formation has been observed north of Abaco that has recently moved out of this chart area. These two eddy formations continue to pull warmer (78°F) blue to Bahamas blue water in an unfavorable offshore direction northeast across the Great Abaco Canyon. However, we have recently observed a counter-clockwise rotation northeast of Abaco that appears to have pulled cooler (76°F) Bahamas blue water southwest across the southern ledges of the Great Abaco Canyon and the northern edges of the Jurassic Park before moving in a clockwise direction offshore of the ledges north of Abaco near the Flat Top and Double Dips. We anticipate these boundaries north of Abaco near the Dips and Flat Top to continue moving in an unfavorable offshore direction by tomorrow morning. East of Abaco, we continue to observe cooler (75/76°F) Bahamas blue water pushing northwest towards the ledges and good bottom near the North Bar and Pocket. Additionally, a relatively large, clockwise rotating eddy formation has been observed north of Walker's Cay (centered near 78°25'W & 28°00'N). This eddy formation has pulled warmer (77°F) Bahamas blue water southeast from the eastern edges of the Gulf Stream towards the 500-600 fathom depths northeast of Walker's Cay. Some of this warmer water has been pulled east by the counter-clockwise rotating eddy formation north of Abaco. We have also included an ocean color/chlorophyll composite image from yesterday afternoon and today so you can get a sense of where the bluer and greener water is located (email only, white=clouds).

With this in mind, the better chances for tuna, dolphin, wahoo, and billfish fishing action is likely to occur east of Abaco from the northern ledges of the Pocket (near 76°50'W & 26°26'N (6)) and southwest towards the North Bar (near 76°52'W & 26°20'N (6) and 76°54'W & 26°15'N (4)) where favorable (78/77°F-76/75°F) blended blue/bluer to Bahamas blue water mass boundaries have been observed for four to six days. These conditions suggest good chances for fishing action to occur. Northeast of Abaco, the better chances for fishing action are likely to occur along the southern ledges of the Great Abaco Canyon (near 76°47'W & 27°00'N (3)) where favorable (78°F-76°F) Bahamas blue water mass boundaries have been observed for three days. From here, continue working the northern ledges of the Great Abaco Canyon (from near 76°40'W & 27°06'N (2) and 76°35'W & 27°15'N (3)) where similar favorable water mass boundaries have also been observed for two to three days. These conditions suggest additional good chances for billfish fishing action to occur. Keep in mind, fishing the cooler edges of this boundary will likely increase your chances for finding favorable fishing action. On your way offshore, keep a keen eye out for weedlines, birds, bait, and other signs of life as these are classic signs of water mass boundary conditions. We have observed a counter-clockwise center of rotation just northeast of Abaco near the Little Abaco Canyon that has pulled warmer (77/78°F) Bahamas blue water northwest, towards the Bridge (near 76°47'W & 26°40'N) and west (near 76°50'W & 26°44'N (2), 76°58'W & 26°43'N, and 76°58'W & 26°38'N (2)) for the past one to two days. These conditions suggest additional increased chances for fishing action to occur. North of Abaco, we have also observed different, but relatively strong (76/77°F-78°F) blended blue to bluer/Bahamas blue water mass boundaries moving offshore over the Double Dips (near 77°14'W & 27°03'N (5)). Keep in mind, these areas may be experiencing unfavorable offshore flow of water. This offshore flow of water is often associated with reduced overall fishing productivity. You may also try fishing the 750 fathom depths north of the Great Abaco Canyon (from near 77°03'W & 27°15'N (6)) and northeast (from near 76°52'W & 27°20'N (2) to 76°33'W & 27°50'N (2)) where favorable (78°F-75°F) blue to Bahamas blue water mass boundaries have also been observed. Keep in mind, these boundaries may continue to pull in an unfavorable offshore direction to the north as the counter-clockwise rotating eddy formation continues moving northwards as well.

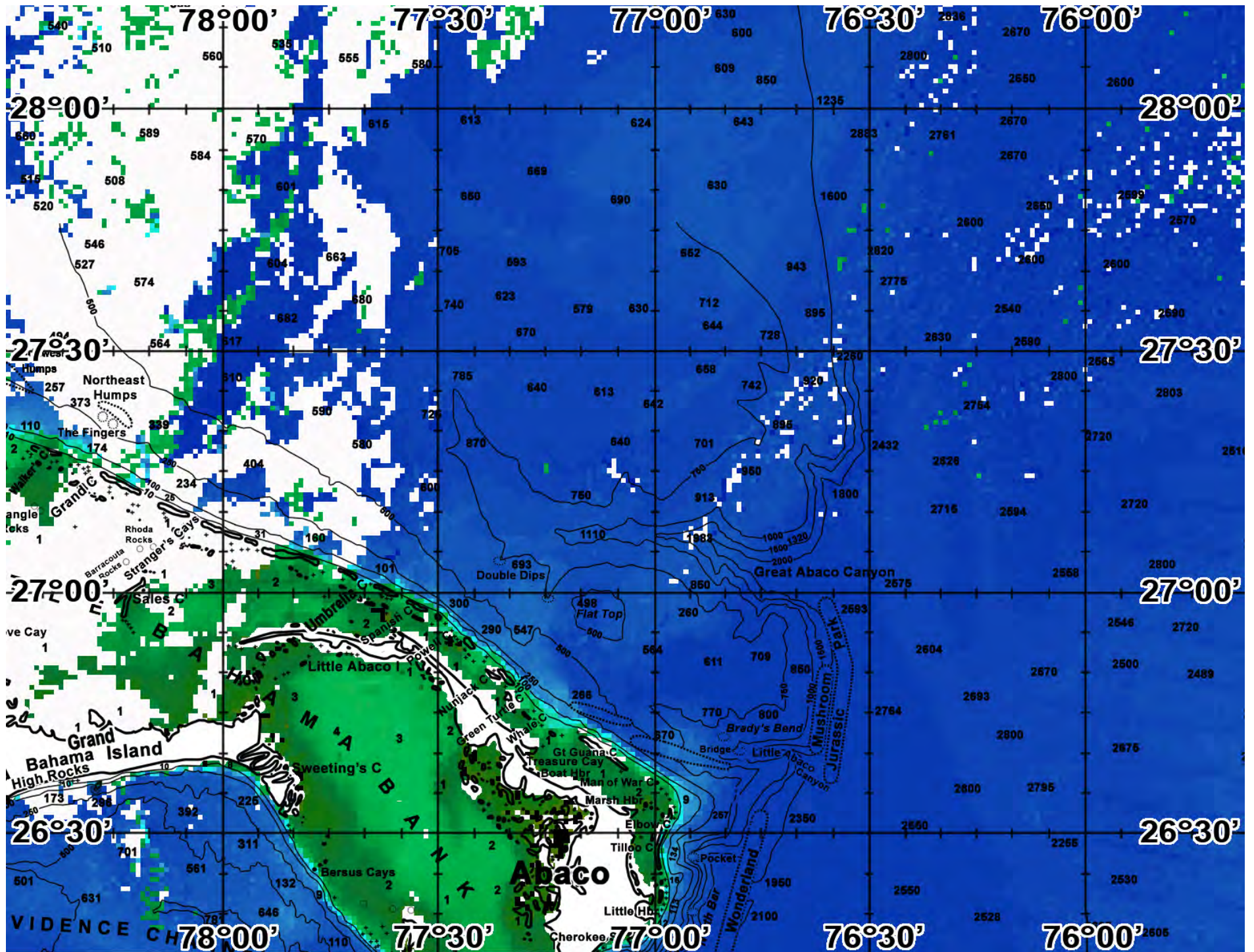
The next best chances for tuna, dolphin, wahoo, and billfish fishing action are likely to occur near the Northeast Humps and the Fingers (near 78°12'W & 27°20'N (5) and 78°18'W & 27°22'N (5)) as well as the 300 fathom depths off of the Northwest Humps (near 78°25'W & 27°26'N (5) to 78°37'W & 27°34'N (5)) where favorable (77°F-75/76°F) blue to Bahamas blue water mass boundaries have been observed for up to five days. These conditions suggest good chances for fishing action to occur. On your way offshore, keep a keen eye out for weedlines, birds, bait, and other signs of life as these are classic signs of water mass boundary conditions. Over the 100 fathom good bottom (near 78°22'W & 27°20'N (2)) favorable (77°F) blue green/blended blue to bluer water mass boundaries have been observed for two days. Similar water mass boundaries have been observed over the 100 fathom good bottom east of Walker's Cay (to near 78°10'W & 27°14'N (5) and 77°54'W & 27°08'N (5)) for the past five days. These conditions suggest additional good chances for inshore tuna, dolphin, and wahoo fishing action to occur as well.

**ROFFS™ Summer Hours: Mon – Fri. 9:00 am – 5:00 pm EDT (sometimes later based on demand) with analysis order deadline before 2pm. We are now open on Saturdays 9AM to 4PM (sometimes we close earlier based on demand) analysis order deadline is 9:00am on Saturday. Thank you for not sharing this analysis with non-paying anglers.** Remember you can order and/or purchase your fishing analyses from our website (<http://www.roffs.com/>) or by email ([fishing@roffs.com](mailto:fishing@roffs.com)). Verbal updates are free while on the water between 10:30 AM and 11:59 AM (eastern time).







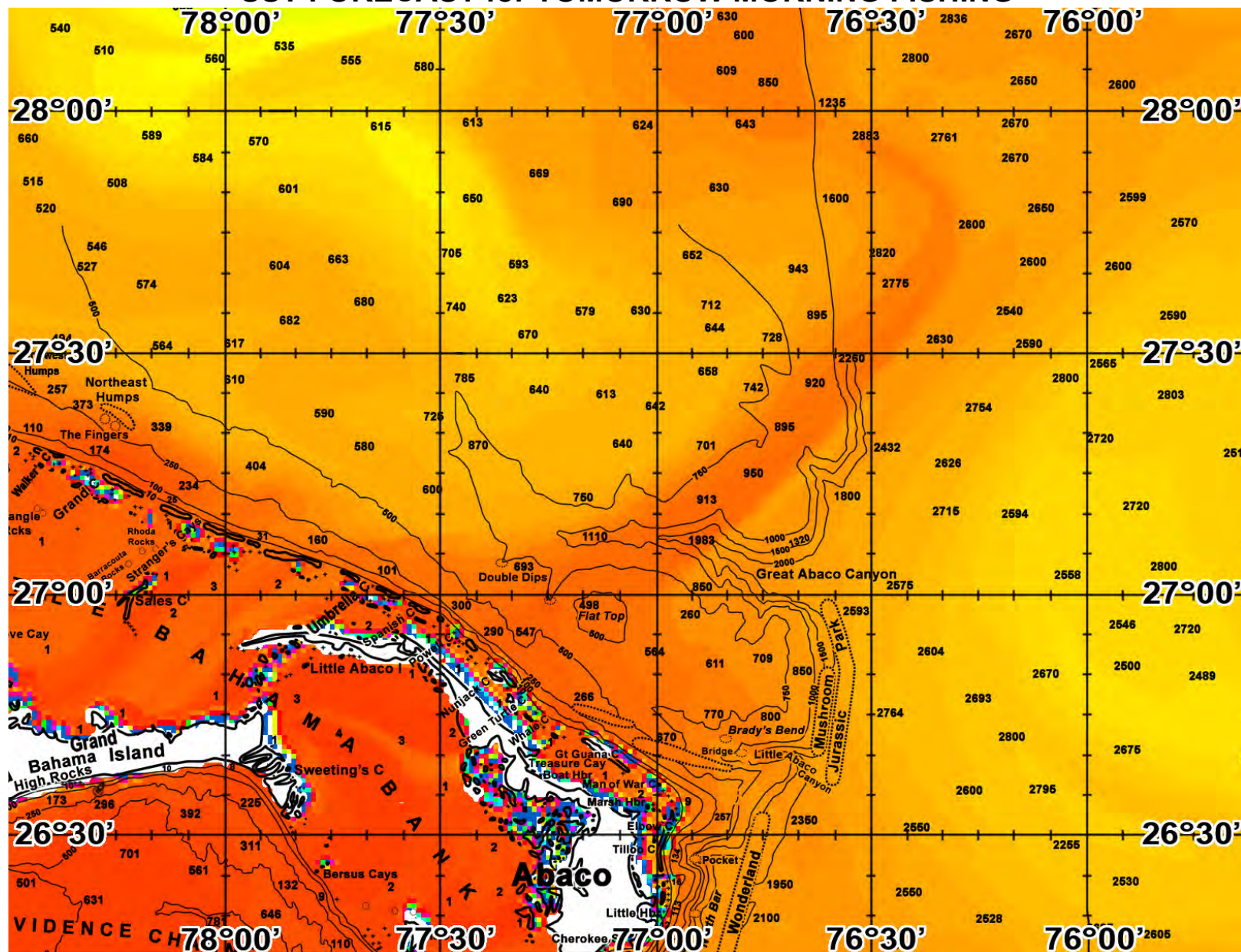






# FATHOM SCIENCE

## SST FORECAST for TOMORROW MORNING FISHING







# FATHOM SCIENCE

OCEAN COLOR/CHLOROPHYLL FORECAST for TOMORROW MORNING

